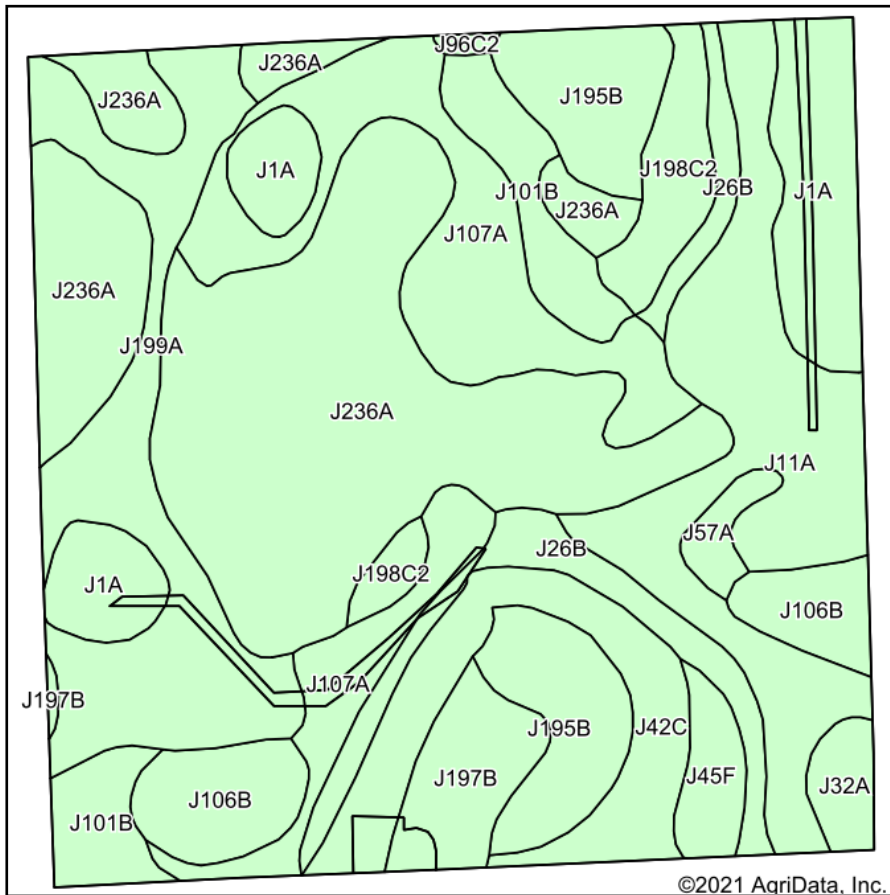
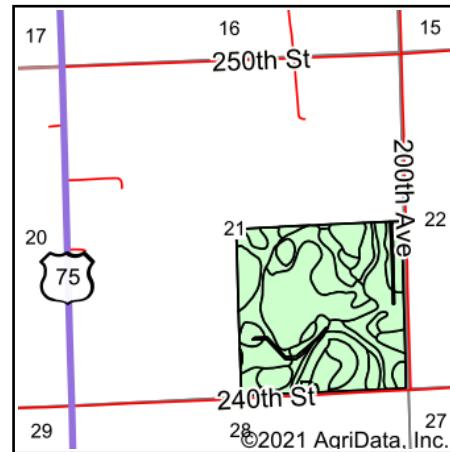


Soils Map



Soils data provided by USDA and NRCS.

©2021 AgriData, Inc.



State: **Minnesota**
 County: **Lincoln**
 Location: **21-111N-45W**
 Township: **Ash Lake**
 Acres: **154.21**
 Date: **11/4/2021**

**BURLAGE
 PETERSON**
 Auctioneers & Realtors, LLC

Maps Provided By:

 CUSTOMIZED ONLINE MAPPING
 © AgriData, Inc. 2021 www.AgriDataInc.com



Area Symbol: MN081, Soil Area Version: 20

Code	Soil Description	Acres	Percent of field	Soil Drainage	Non-Irr Class *c	Range Production (lbs/acre/yr)	Productivity Index	*n NCCPI Overall
J236A	Highpoint Lake silty clay, 0 to 2 percent slopes	39.82	25.8%	Moderately well drained	Ils	0	90	54
J11A	Vallers clay loam, 0 to 2 percent slopes	17.59	11.4%	Poorly drained	IIw	0	90	69
J107A	Lakepark-Roliss-Parnell, depressional, complex, 0 to 3 percent slopes	17.19	11.1%	Poorly drained	IIw	0	93	71
J199A	Fulda silty clay, 0 to 2 percent slopes	15.45	10.0%	Poorly drained	IIw	0	86	53
J1A	Parnell silty clay loam, depressional, 0 to 1 percent slopes	10.88	7.1%	Very poorly drained	IIIw	0	86	60
J195B	Poinsett-Waubay silty clay loams, 1 to 6 percent slopes	9.93	6.4%	Well drained	Ile	3789	93	73
J42C	Sandberg-Arvilla complex, 6 to 12 percent slopes	9.20	6.0%	Excessively drained	VIIs	0	38	32
J26B	Damen loam, 2 to 6 percent slopes	6.64	4.3%	Well drained	Ile	0	99	72
J101B	Hokans-Svea complex, 1 to 4 percent slopes	6.51	4.2%	Well drained	Ile	0	98	69
J106B	Barnes-Buse-Svea complex, 1 to 6 percent slopes	6.42	4.2%	Well drained	Ile	0	88	66
J198C2	Rusklyn-Poinsett complex, 6 to 12 percent slopes, moderately eroded	4.62	3.0%	Well drained	IIIle	0	78	55
J197B	Lake Benton sandy loam, 2 to 6 percent slopes	4.49	2.9%	Well drained	IIIle	0	77	49
J45F	Sandberg sandy loam, 12 to 40 percent slopes	2.24	1.5%	Excessively drained	VIIle	0	20	30
J32A	Bigstone silty clay loam, depressional, 0 to 1 percent slopes	1.69	1.1%	Very poorly drained	IIIw	0	77	75
J57A	Balaton loam, 1 to 3 percent slopes	1.27	0.8%	Moderately well drained	IIs	0	96	72
J96C2	Barnes-Buse complex, 6 to 12 percent slopes, moderately eroded	0.27	0.2%	Well drained	IIIle	0	80	59
Weighted Average					2.45	244	85.5	*n 59.7

*n: The aggregation method is "Weighted Average using all components"

*c: Using Capabilities Class Dominant Condition Aggregation Method

Soils data provided by USDA and NRCS.