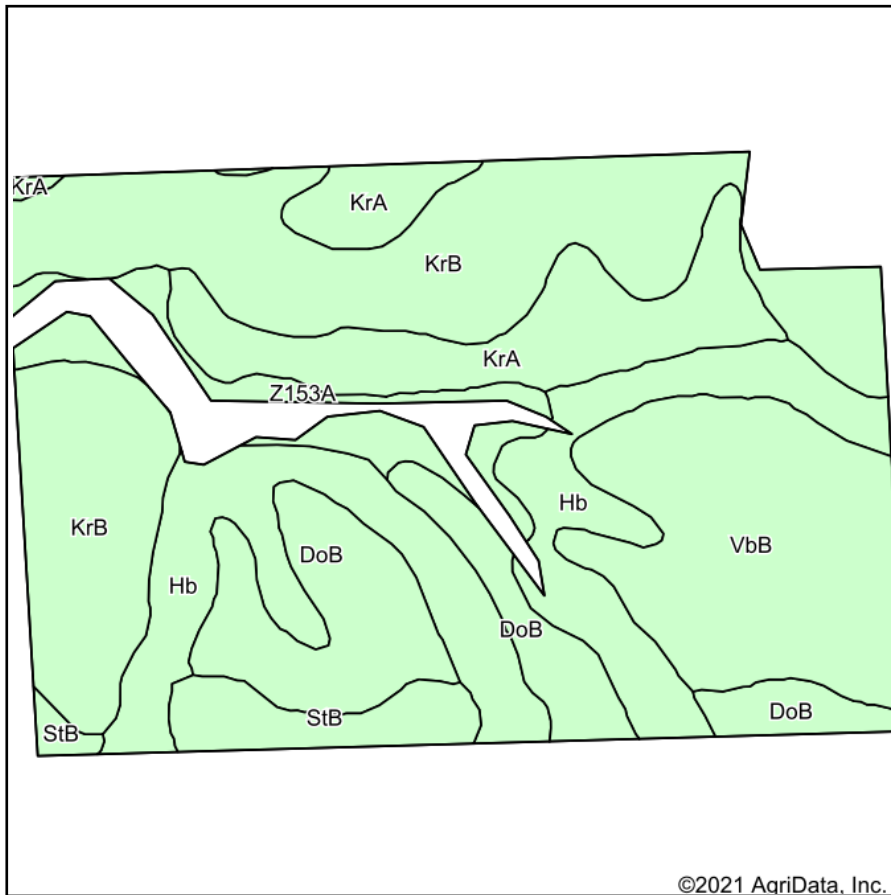
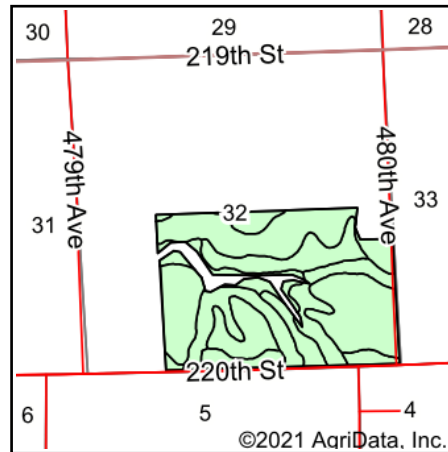


# Soils Map



Soils data provided by USDA and NRCS.



State: **South Dakota**  
 County: **Brookings**  
 Location: **32-109N-48W**  
 Township: **Parnell**  
 Acres: **217**  
 Date: **12/15/2021**

**BURLAGE  
 PETERSON**

Auctioneers & Realtors, LLC

Maps Provided By:



Area Symbol: SD011, Soil Area Version: 29

Code	Soil Description	Acres	Percent of field	Soil Drainage	Non-Irr Class *c	Range Production (lbs/acre/yr)	Productivity Index	*n NCCPI Overall
KrB	Kranzburg-Brookings silty clay loams, 1 to 6 percent slopes	65.71	30.3%	Well drained	Ile	3831	87	70
Hb	Hamerly-Badger complex, 0 to 2 percent slopes	41.24	19.0%	Somewhat poorly drained	Ils	4574	78	63
VbB	Vienna-Brookings complex, 1 to 6 percent slopes	36.02	16.6%	Well drained	Ile	3839	86	69
DoB	Doland loam, 2 to 6 percent slopes	28.07	12.9%	Well drained	Ile	3602	82	63
KrA	Kranzburg-Brookings silty clay loams, 0 to 2 percent slopes	26.59	12.3%	Well drained	Is	3862	93	71
Z153A	Lamoure-Rauville silty clay loams, channeled, 0 to 2 percent slopes, frequently flooded	10.60	4.9%	Poorly drained	Vlw	5536	13	22
StB	Strayhoss-Maddock complex, 2 to 6 percent slopes	8.77	4.0%	Well drained	Ile	3449	60	46
<b>Weighted Average</b>					<b>2.07</b>	<b>4015.6</b>	<b>80.5</b>	<b>*n 64.4</b>

\*n: The aggregation method is "Weighted Average using all components"

\*c: Using Capabilities Class Dominant Condition Aggregation Method

Soils data provided by USDA and NRCS.