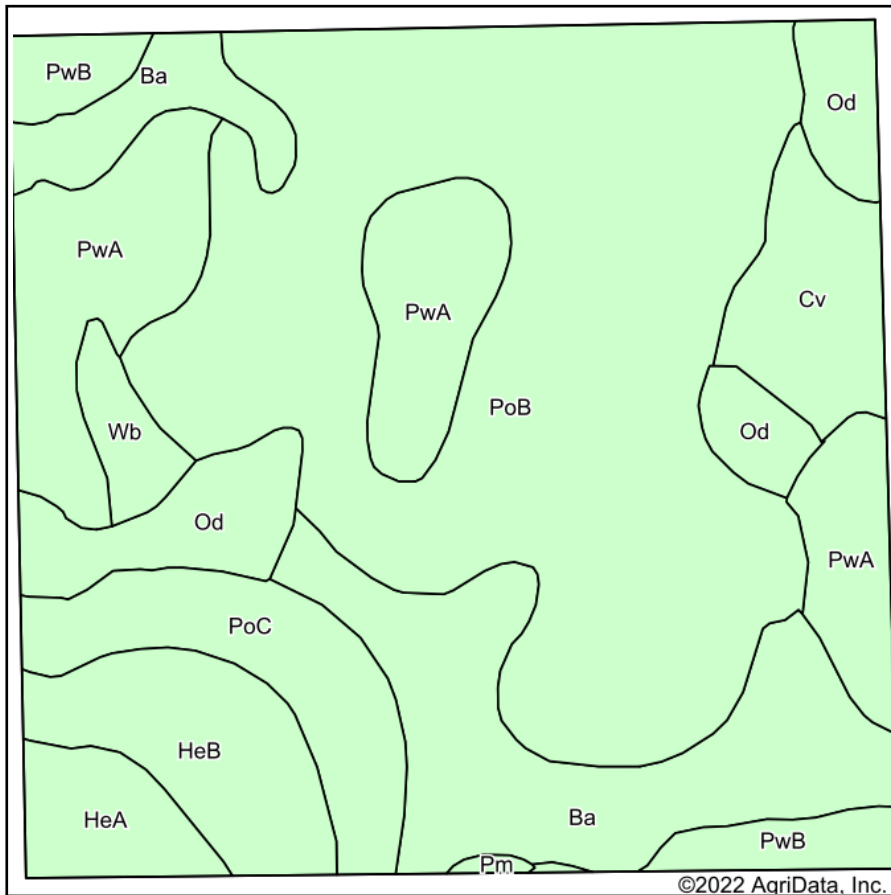
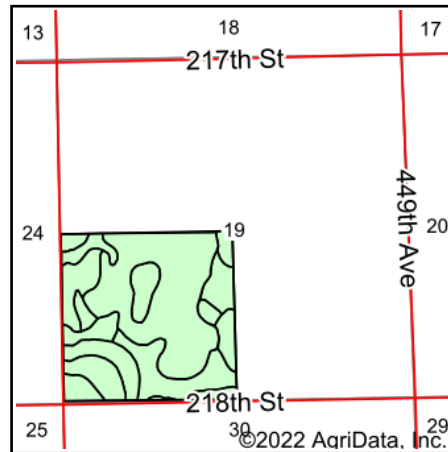


Soils Map



Soils data provided by USDA and NRCS.



State: **South Dakota**
 County: **Kingsbury**
 Location: **19-109N-53W**
 Township: **Spring Lake**
 Acres: **156.64**
 Date: **5/23/2022**

**BURLAGE
 PETERSON**
 Auctioneers & Realtors, LLC

Maps Provided By:



Area Symbol: SD077, Soil Area Version: 25

Code	Soil Description	Acres	Percent of field	Non-Irr Class	Productivity Index	*n NCCPI Overall
PoB	Poinsett-Buse-Waubay complex, 1 to 6 percent slopes	65.00	41.5%	Ile	81	69
Ba	Badger silty clay loam, 0 to 1 percent slopes	22.90	14.6%	IIw	80	46
PwA	Poinsett-Waubay silty clay loams, 0 to 2 percent slopes	21.35	13.6%	Is	93	74
Od	Oldham silty clay loam	10.26	6.6%	Vw	34	31
PoC	Poinsett-Buse-Waubay complex, 2 to 9 percent slopes	9.52	6.1%	IIIe	69	68
HeB	Hetland silty clay loam, 2 to 6 percent slopes	8.82	5.6%	Ile	84	61
Cv	Cubden-Badger silty clay loams, coteau, 0 to 2 percent slopes	7.04	4.5%	IIs	81	61
PwB	Poinsett-Waubay silty clay loams, 1 to 6 percent slopes	4.68	3.0%	Ile	89	73
HeA	Hetland silty clay loam, 0 to 2 percent slopes	4.34	2.8%	Is	89	61
Wb	Waubay-Badger silty clay loams, 0 to 2 percent slopes	2.47	1.6%	Iw	91	68
Pm	Playmoor silty clay loam	0.26	0.2%	IVw	33	27
Weighted Average				2.08	79.4	*n 62.8

*n: The aggregation method is "Weighted Average using all components"
 Soils data provided by USDA and NRCS.