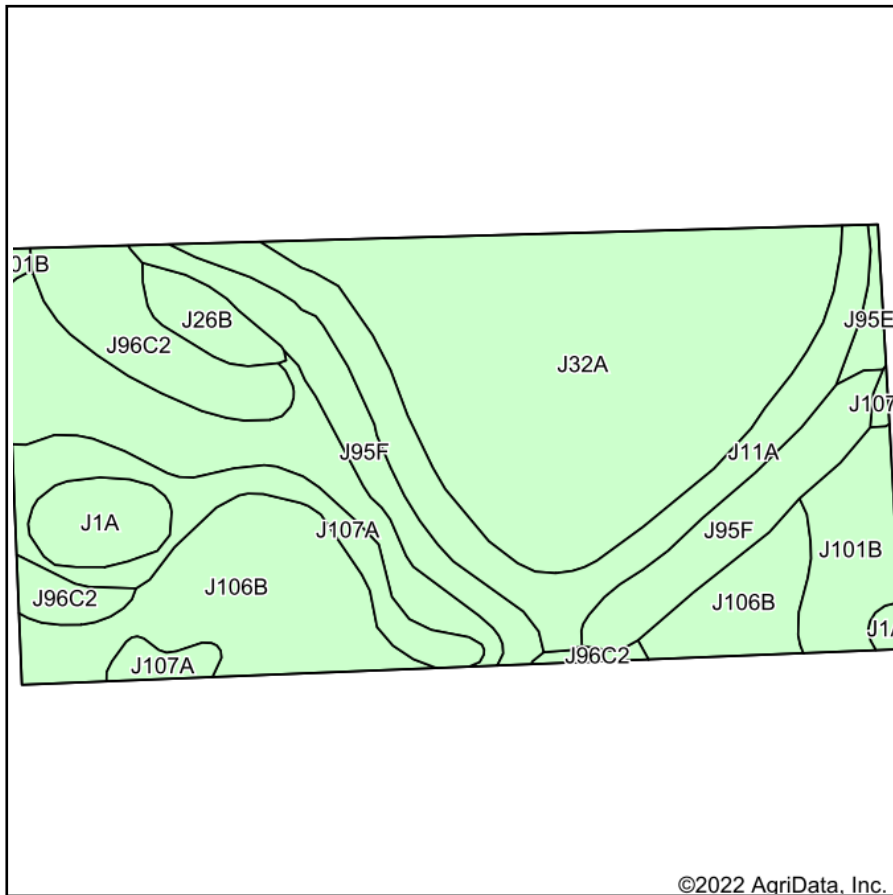
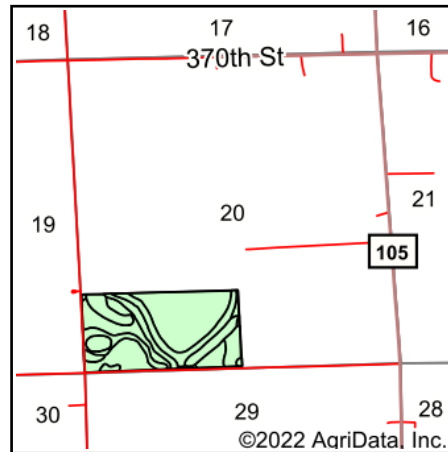


Soils Map



Soils data provided by USDA and NRCS.



State: **Minnesota**
 County: **Lincoln**
 Location: **20-113N-45W**
 Township: **Marble**
 Acres: **80**
 Date: **5/17/2022**

**BURLAGE
 PETERSON**
 Auctioneers & Realtors, LLC

Maps Provided By:



Area Symbol: MN081, Soil Area Version: 20

Code	Soil Description	Acres	Percent of field	Non-Irr Class	Productivity Index	*n NCCPI Overall
J32A	Bigstone silty clay loam, depressional, 0 to 1 percent slopes	25.15	31.4%	IIIw	77	75
J106B	Barnes-Buse-Svea complex, 1 to 6 percent slopes	19.11	23.9%	Ile	88	66
J95F	Buse, stony-Wilno complex, 25 to 40 percent slopes	8.24	10.3%	VIIe	17	16
J11A	Vallers clay loam, 0 to 2 percent slopes	8.12	10.1%	IIw	90	69
J107A	Lakepark-Roliss-Parnell, depressional, complex, 0 to 3 percent slopes	5.53	6.9%	IIw	93	71
J96C2	Barnes-Buse complex, 6 to 12 percent slopes, moderately eroded	5.41	6.8%	IIIe	80	59
J101B	Hokans-Svea complex, 1 to 4 percent slopes	3.73	4.7%	Ile	98	69
J1A	Parnell silty clay loam, depressional, 0 to 1 percent slopes	2.49	3.1%	IIIw	86	60
J26B	Darnen loam, 2 to 6 percent slopes	1.56	2.0%	Ile	99	72
J95E	Buse, stony-Wilno complex, 18 to 25 percent slopes	0.66	0.8%	VIe	26	44
Weighted Average					2.96	77.3
						*n 63.7

*n: The aggregation method is "Weighted Average using all components"
 Soils data provided by USDA and NRCS.