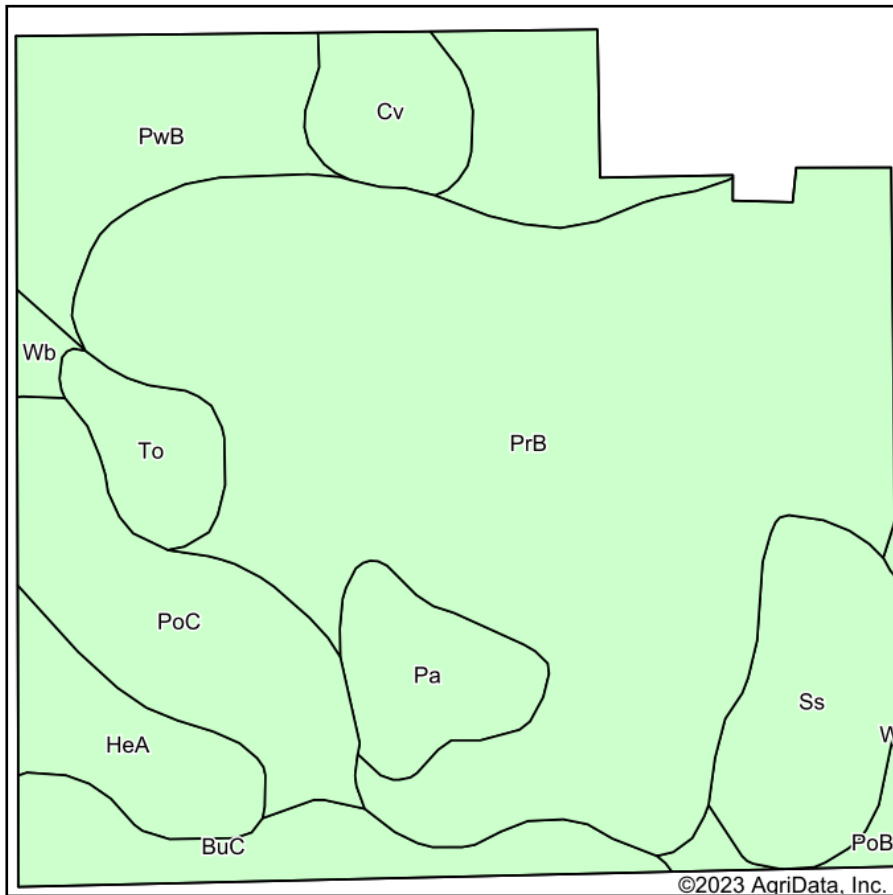
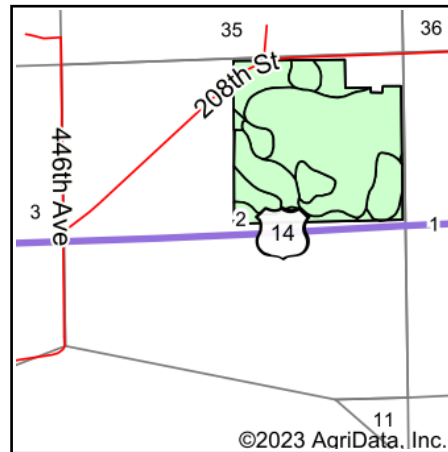


# Soils Map



Soils data provided by USDA and NRCS.



State: **South Dakota**  
 County: **Kingsbury**  
 Location: **2-110N-54W**  
 Township: **Denver**  
 Acres: **139.97**  
 Date: **2/22/2023**

**BURLAGE  
 PETERSON**  
 Auctioneers & Realtors, LLC

Maps Provided By:



Area Symbol: SD077, Soil Area Version: 26

Code	Soil Description	Acres	Percent of field	Non-Irr Class	Productivity Index	*n NCCPI Overall
PrB	Poinsett-Rusklyn-Waubay silty clay loams, 1 to 6 percent slopes	70.35	50.3%	Ile	84	71
PwB	Poinsett-Waubay silty clay loams, 1 to 6 percent slopes	16.94	12.1%	Ile	89	73
PoC	Poinsett-Buse-Waubay complex, 2 to 9 percent slopes	12.74	9.1%	IIle	69	67
Ss	Southam silty clay loam, 0 to 1 percent slopes	9.90	7.1%	VIIIw	10	28
BuC	Buse-Barnes loams, 6 to 9 percent slopes	7.49	5.4%	IVe	60	53
HeA	Hetland silty clay loam, 0 to 2 percent slopes	6.04	4.3%	Is	89	60
Pa	Parnell silty clay loam	5.67	4.1%	Vw	34	25
Cv	Cubden-Badger silty clay loams, coteau, 0 to 2 percent slopes	4.54	3.2%	IIs	81	60
To	Tonka silty clay loam, 0 to 1 percent slopes	4.05	2.9%	IVw	58	40
PoB	Poinsett-Buse-Waubay complex, 1 to 6 percent slopes	1.40	1.0%	Ile	81	69
Wb	Waubay-Badger silty clay loams, 0 to 2 percent slopes	0.85	0.6%	Iw	91	68
<b>Weighted Average</b>				<b>2.75</b>	<b>74.1</b>	<b>*n 63.2</b>

\*n: The aggregation method is "Weighted Average using all components"  
 Soils data provided by USDA and NRCS.