






Common Land Unit

PLSS

-  Cropland
-  Tract Boundary

Wetland Determination Identifiers

-  Restricted Use
-  Limited Restrictions
-  Exempt from Conservation Compliance Provisions

Unless otherwise noted,
crops listed below are:
Non-irrigated Intended for Grain
Corn = Yellow
Soybeans = Common
Wheat - HRS or HRW
Sunflowers = Oil or Non

Producer initial _____
Date _____

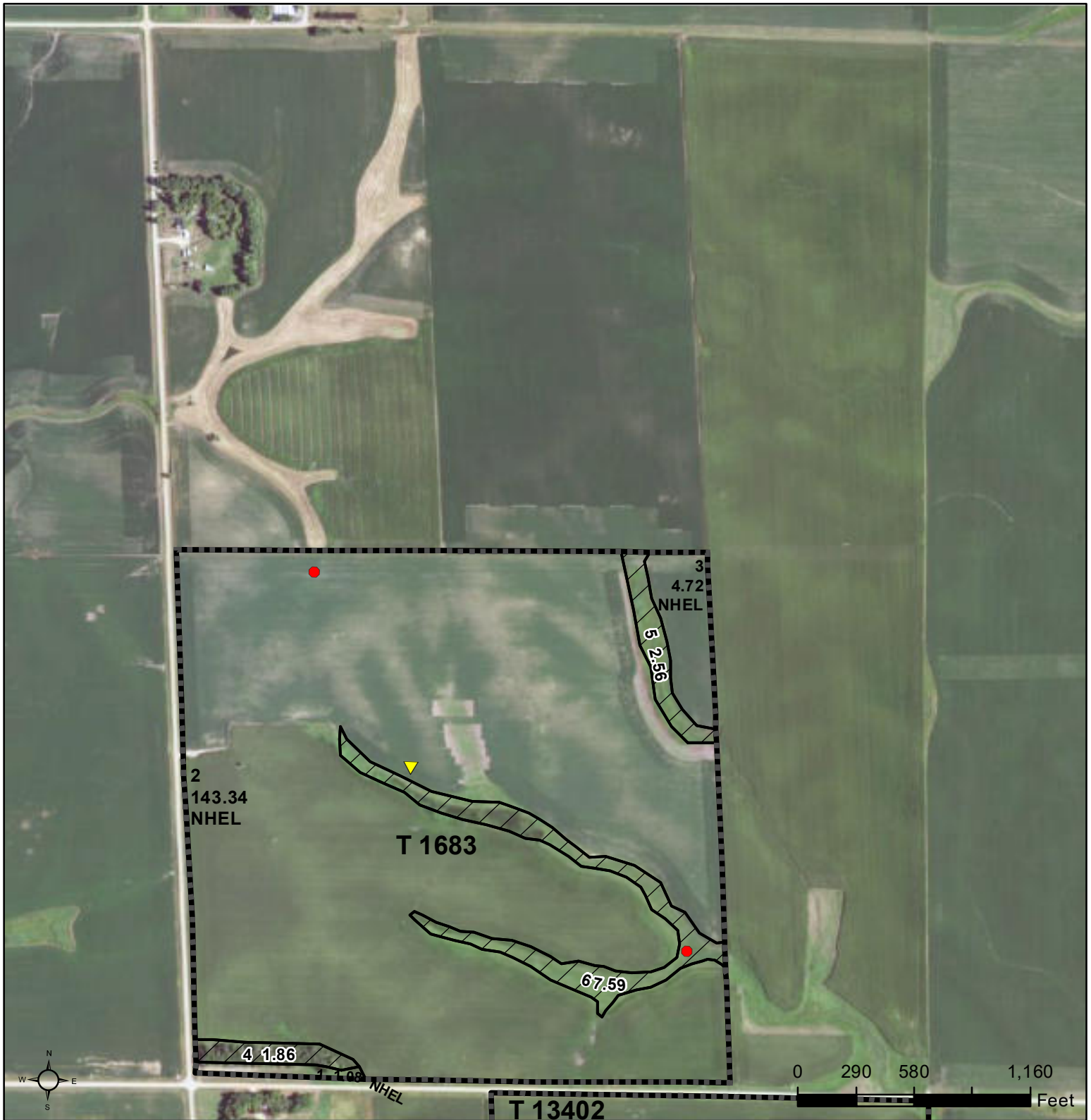
2023 Program Year

Map Created May 02, 2023

Farm 5721

3-107N-47W-Moody

United States Department of Agriculture (USDA) Farm Service Agency (FSA) maps are for FSA Program administration only. This map does not represent a legal survey or reflect actual ownership; rather it depicts the information provided directly from the producer and/or National Agricultural Imagery Program (NAIP) imagery. The producer accepts the data 'as is' and assumes all risks associated with its use. USDA-FSA assumes no responsibility for actual or consequential damage incurred as a result of any user's reliance on this data outside FSA Programs. Wetland identifiers do not represent the size, shape, or specific determination of the area. Refer to your original determination (CPA-026 and attached maps) for exact boundaries and determinations or contact USDA Natural Resources Conservation Service (NRCS).



Common Land Unit Tract Boundary
 Non-Cropland
 Cropland
 Tract Boundary
 PLSS

Wetland Determination Identifiers

- Restricted Use
- Limited Restrictions
- Exempt from Conservation
- Compliance Provisions

Unless otherwise noted,
crops listed below are:
Non-irrigated Intended for Grain
Corn = Yellow
Soybeans = Common
Wheat - HRS or HRW
Sunflowers = Oil or Non

Producer initial _____
Date _____

2023 Program Year
Map Created May 02, 2023

Farm 5721

34-108N-47W-Moody

United States Department of Agriculture (USDA) Farm Service Agency (FSA) maps are for FSA Program administration only. This map does not represent a legal survey or reflect actual ownership; rather it depicts the information provided directly from the producer and/or National Agricultural Imagery Program (NAIP) imagery. The producer accepts the data 'as is' and assumes all risks associated with its use. USDA-FSA assumes no responsibility for actual or consequential damage incurred as a result of any user's reliance on this data outside FSA Programs. Wetland identifiers do not represent the size, shape, or specific determination of the area. Refer to your original determination (CPA-026 and attached maps) for exact boundaries and determinations or contact USDA Natural Resources Conservation Service (NRCS).