

20-115-50

U.S.D.A.
Soil Conservation Service

SCS-CPA-026
(5-89)

1. Name and Address of Person

Thomas L. Miller
RR 1 Box 77
Clear Lake SD 57226

2. Date of Request

3. County

Deuel

HIGHLY ERODIBLE LAND AND WETLAND
CONSERVATION DETERMINATION

4. Name of USDA Agency or Person Requesting Determination

SCS

5. Farm No. and Tract No.

558 T 963

SECTION I - HIGHLY ERODIBLE LAND

6. Is soil survey now available for making a highly erodible land determination?	Yes	No	Field No.(s)	Total Acres
7. Are there highly erodible soil map units on this farm?				
8. List highly erodible fields that, according to ASCS records, were used to produce an agricultural commodity in any crop year during 1981-1985.				
9. List highly erodible fields that have been or will be converted for the production of agricultural commodities and, according to ASCS records, were not used for this purpose in any crop year during 1981-1985; and were not enrolled in a USDA set-aside or diversion program.				

10. This Highly Erodible Land determination was completed in the: Office Field

NOTE: If you have highly erodible cropland fields, you may need to have a conservation plan developed for these fields. For further information, contact the local office of the Soil Conservation Service.

SECTION II - WETLAND

11. Are there hydric soils on this farm?	Yes	No	Field No.(s)	Total Wetland Acres
List field numbers and acres, where appropriate, for the following :				
12. Wetlands (W), including abandoned wetlands, or Farmed Wetlands (FW). Wetlands may be farmed under natural conditions. Farmed Wetlands may be farmed and maintained in the same manner as they were prior to December 23, 1985, as long as they are not abandoned.			See attached Sheet	2
13. Prior Converted Wetlands (PC) - The use, management, drainage, and alteration of prior converted wetlands (PC) are not subject to FSA unless the area reverts to wetland as a result of abandonment. You should inform SCS of any area to be used to produce an agricultural commodity that has not been cropped, managed, or maintained for 5 years or more.				
14. Artificial Wetlands (AW) - Artificial Wetlands includes irrigation induced wetlands. These Wetlands are not subject to FSA.				
15. Minimal Effect Wetlands (MW) - These wetlands are to be farmed according to the minimal effect agreement signed at the time the minimal effect determination was made.				
16. Converted Wetlands (CW) - In any year that an agricultural commodity is planted on these Converted Wetlands, you will be ineligible for USDA benefits. If you believe that the conversion was commenced before December 23, 1985, or that the conversion was caused by a third party, contact the ASCS office to request a commenced or third party determination.				

17. The planned alteration measures on wetlands in fields _____ are considered maintenance and are in compliance with FSA.

18. The planned alteration measures on wetlands in fields _____ are not considered to be maintenance and if installed will cause the area to become a Converted Wetland (CW). See item 16 for information on CW.

19. This wetland determination was completed in the: Office Field

20. This determination was: Delivered Mailed To the Person on Date: 9-13-90

NOTE: If you do not agree with this determination, you may request a reconsideration from the person that signed this form in Block 22 below. The reconsideration is a prerequisite for any further appeal. The request for the reconsideration must be in writing and must state your reasons for the request. The request must be mailed or delivered within 15 days after this determination is mailed to or otherwise made available to you. Please see reverse side of the producer's copy of this form for more information on appeals procedure.

NOTE: If you intend to convert additional land to cropland or alter any wetlands, you must initiate another Form AD-1026 at the local office of ASCS. Abandonment is where land has not been cropped, managed, or maintained for 5 years or more. You should inform SCS if you plan to produce an agricultural commodity on abandoned wetlands.

21. Remarks Wetlands may be cropped when natural conditions permit; however they cannot be drained or altered to destroy their wetland character for purposes of commodity production. Drainage systems in farmed wetlands (FW) may be maintained to their original design. This determination for USDA benefits only.

22. Signature of SCS District Conservationist

Lewis Luoma by OAO

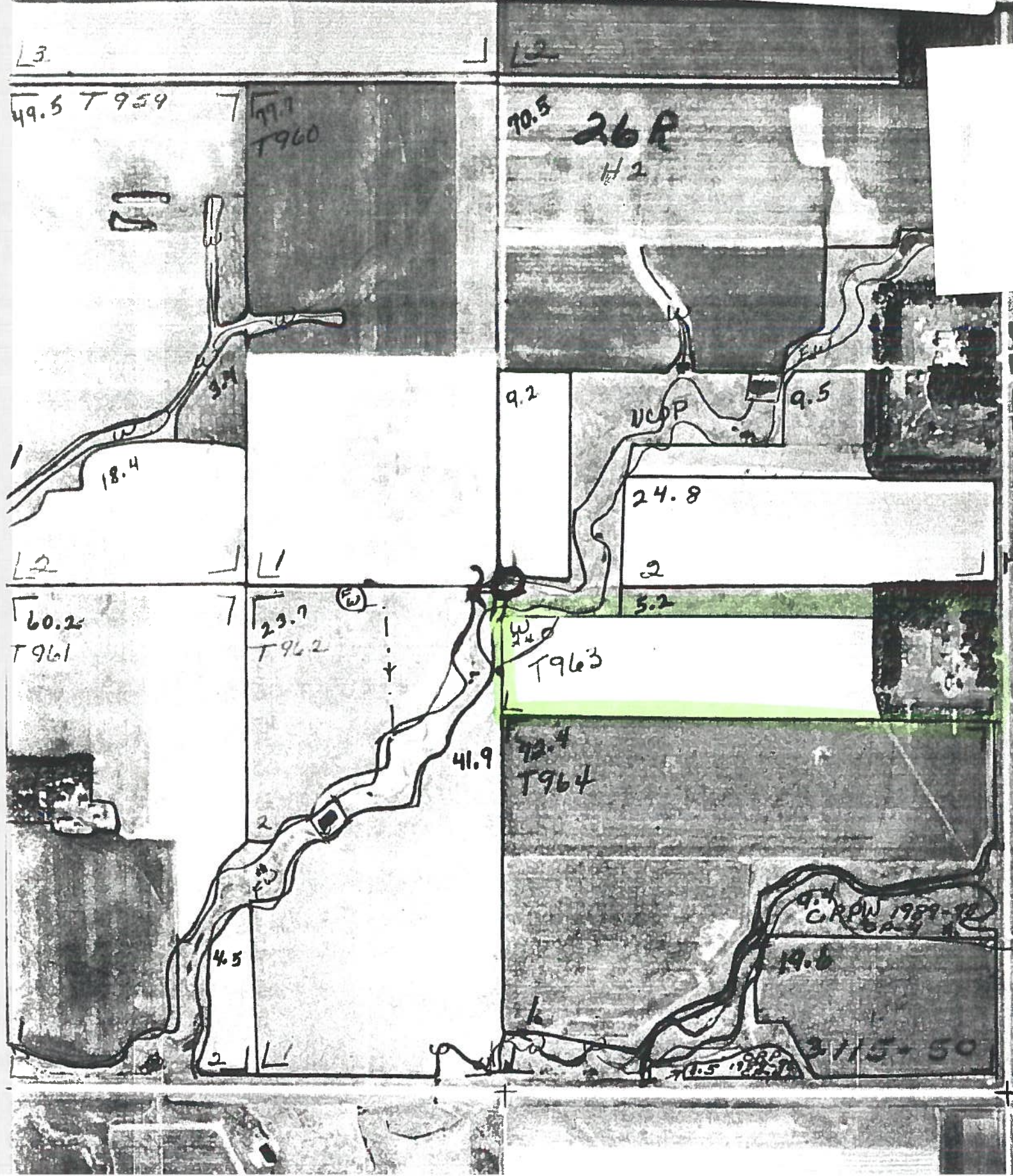
23. Date

9-13-90

**OFFICIAL WETLAND DETERMINATION
for Highlighted Tracts Only**

NOT TO

- (W) Wetland
- (FW) Ditched or tilled prior to 12-23-85 but still wetland
- (PC) Converted Wetland prior to 12-23-85
- (CW) Converted Wetland after 12-23-85
- (---) Ditched prior to 12-23-85
- (---) Tilled prior to 12-23-85
- (w---) Wetland in a channel



FN 558

WETLAND DATA LEDGER

OPERATOR	OWNER	SEC. NO.	TRACT NO.	FIELD NO.	NO.	NUMBER AND ACRES OF WETLANDS						AM 14				
						W 12a	FW 12b	ACRES	NO.	CW 16	PC 13 Present Y/N		MWLS	ACRES	ESK	NO.
THOMAS Miller	Same	20	963	1	1	2.0										
		20-15-50														

SCS-CPA-026A
(1/87)

HIGHLY ERODIBLE LAND AND WETLAND CONSERVATION DETERMINATION
(Continuation Form)

3. NAME OF USDA AGENCY OR PRODUCER REQUESTING DETERMINATION

A8CS

1. NAME AND ADDRESS OF PRODUCER

Thomas W. Miller
PR 1 Box 77
Clear Lake, SO 57284

4. FARM NO. AND TRACT NO.(S)

558 T 963

2.

SHEET 2 OF 2

5. COUNTY

Dave1

ITEM NUMBERS FROM
SCS-CPA-26

TRACT NUMBER

FIELD NUMBERS

Total Acres

12

963

1

2

6. SIGNATURE OF SCS DISTRICT CONSERVATIONIST

Kevin Luoma by Cao

DATE

9-13-90

HIGHLY ERODIBLE LAND AND WETLAND
CONSERVATION DETERMINATION

Thomas L. Miller
RR 1 Box 77
Clear Lake SD 57226

Deuel

4. Name of USDA Agency or Person Requesting Determination

SCS

5. Farm No. and Tract No.

558 T 963

SECTION I - HIGHLY ERODIBLE LAND

6. Is soil survey now available for making a highly erodible land determination?	Yes	No	Field No.(s)	Total Acres
7. Are there highly erodible soil map units on this farm?				
8. List highly erodible fields that, according to ASCS records, were used to produce an agricultural commodity in any crop year during 1981-1985.				
9. List highly erodible fields that have been or will be converted for the production of agricultural commodities and, according to ASCS records, were not used for this purpose in any crop year during 1981-1985; and were not enrolled in a USDA set-aside or diversion program.				

10. This Highly Erodible Land determination was completed in the: Office Field

NOTE: If you have highly erodible cropland fields, you may need to have a conservation plan developed for these fields. For further information, contact the local office of the Soil Conservation Service.

SECTION II - WETLAND

11. Are there hydric soils on this farm?	Yes	No	Field No.(s)	Total Wetland Acres
List field numbers and acres, where appropriate, for the following :				
12. Wetlands (W), including abandoned wetlands, or Farmed Wetlands (FW). Wetlands may be farmed under natural conditions. Farmed Wetlands may be farmed and maintained in the same manner as they were prior to December 23, 1985, as long as they are not abandoned.			{ See attached Sheet }	2
13. Prior Converted Wetlands (PC) - The use, management, drainage, and alteration of prior converted wetlands (PC) are not subject to FSA unless the area reverts to wetland as a result of abandonment. You should inform SCS of any area to be used to produce an agricultural commodity that has not been cropped, managed, or maintained for 5 years or more.				
14. Artificial Wetlands (AW) - Artificial Wetlands includes irrigation induced wetlands. These Wetlands are not subject to FSA.				
15. Minimal Effect Wetlands (MW) - These wetlands are to be farmed according to the minimal effect agreement signed at the time the minimal effect determination was made.				
16. Converted Wetlands (CW) - In any year that an agricultural commodity is planted on these Converted Wetlands, you will be ineligible for USDA benefits. If you believe that the conversion was commenced before December 23, 1985, or that the conversion was caused by a third party, contact the ASCS office to request a commenced or third party determination.				

17. The planned alteration measures on wetlands in fields _____ are considered maintenance and are in compliance with FSA.

18. The planned alteration measures on wetlands in fields _____ are not considered to be maintenance and if installed will cause the area to become a Converted Wetland (CW). See item 16 for information on CW.

19. This wetland determination was completed in the: Office Field

20. This determination was: Delivered Mailed To the Person on Date: 9-13-90

NOTE: If you do not agree with this determination, you may request a reconsideration from the person that signed this form in Block 22 below. The reconsideration is a prerequisite for any further appeal. The request for the reconsideration must be in writing and must state your reasons for the request. The request must be mailed or delivered within 15 days after this determination is mailed to or otherwise made available to you. Please see reverse side of the producer's copy of this form for more information on appeals procedure.

NOTE: If you intend to convert additional land to cropland or alter any wetlands, you must initiate another Form AD-1026 at the local office of ASCS. Abandonment is where land has not been cropped, managed, or maintained for 5 years or more. You should inform SCS if you plan to produce an agricultural commodity on abandoned wetlands.

21. Remarks Wetlands may be cropped when natural conditions permit; however they cannot be drained or altered to destroy their wetland character for purposes of commodity production. Drainage systems in farmed wetlands (FW) may be maintained to their original design. This determination for USDA benefits only.

22. Signature of SCS District Conservationist

Lewis Luoma by OAO

23. Date

9-13-90

FN 558

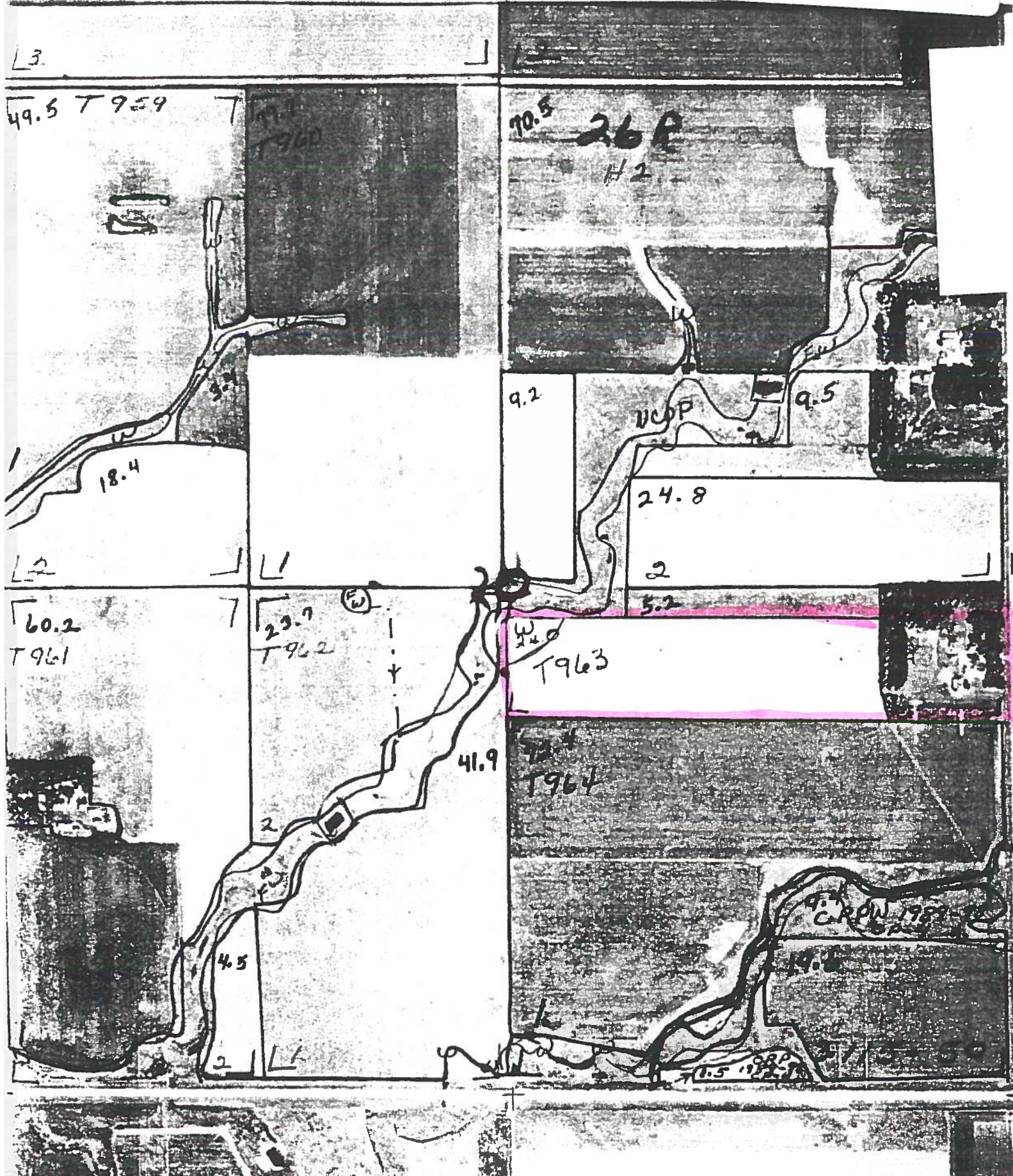
WETLAND DATA LEDGER

OPERATOR		OWNER	Sec. NO.	TRACT NO.	FIELD NO.	NUMBER AND ACRES OF WETLANDS							ACRES	NO.	ACRES	NO.	ACRES	AH	
W 12a	FV 12b					CW 16	PC 13 Present Y/N	MH/S ACRES	MH/S ACRES	MH/S ACRES	MH/S ACRES	MH/S ACRES							
Thomas Miller		Same	20	963	1														
			20-115-50																

OFFICIAL WETLAND DETERMINATION
for Highlighted Tracts Only

NOT TO

- (W) Wetland
- (FW) Ditched or tilled prior to 12-23-85 but still wetland
- (PC) Converted Wetland prior to 12-23-85
- (CW) Converted Wetland after 12-23-85
- (---) Ditched prior to 12-23-85
- (---) Tilled prior to 12-23-85
- (---w---) Wetland in a channel



Michael Reynolds
Rt 1 Box 268
Rutheon, IA 51358

Deuel

**HIGHLY ERODIBLE LAND AND WETLAND
CONSERVATION DETERMINATION**

4. Name of USDA Agency or Person Requesting Determination

5. Farm No. and Tract No.

SECTION 1 - HIGHLY ERODIBLE LAND

6. Is soil survey now available for making a highly erodible land determination?	Yes	No	Field No.(s)	Total Acres
7. Are there highly erodible soil map units on this farm?				
8. List highly erodible fields that, according to ASCS records, were used to produce an agricultural commodity in any crop year during 1981-1985.				
9. List highly erodible fields that have been or will be converted for the production of agricultural commodities and, according to ASCS records, were not used for this purpose in any crop year during 1981-1985; and were not enrolled in a USDA set-aside or diversion program.				

10. This Highly Erodible Land determination was completed in the : Office Field

NOTE: If you have highly erodible cropland fields, you may need to have a conservation plan developed for these fields. For further information, contact the local office of the Soil Conservation Service.

SECTION II - WETLAND

11. Are there hydric soils on this farm?	Yes	No	Field No.(s)	Total Wetland Acres
List field number and acres, where appropriate, for the following:				
12. Wetlands (W), including abandoned wetlands, or Farmed Wetlands (FW). Wetlands may be farmed under natural conditions. Farmed Wetlands may be farmed and maintained in the same manner as they were prior to December 23, 1985, as long as they are not abandoned.			5-4	<u>8 ac</u>
13. Prior Converted Wetlands (PC) - The use, management, drainage, and alteration of prior converted wetlands (PC) are not subject to FSA unless the area reverts to wetland as a result of abandonment. You should inform SCS of any area to be used to produce an agricultural commodity that has not been cropped, managed, or maintained for 5 years or more.				
14. Artificial Wetlands (AW) - Artificial Wetlands includes irrigation induced wetlands. These Wetlands are not subject to FSA.				
15. Minimal Effect Wetlands (MW) - These wetlands are to be farmed according to the minimal effect agreement signed at the time the minimal effect determination was made.				
16. Converted Wetlands (CW) - In any year that an agricultural commodity is planted on these Converted Wetlands, you will be ineligible for USDA benefits. If you believe that the conversion was commenced before December 23, 1985, or that the conversion was caused by a third party, contact the ASCS office to request a commenced or third party determination.				

17. The planned alteration measures on wetlands in fields _____ are considered maintenance and are in compliance with FSA.

18. The planned alteration measures on wetlands in fields _____ are not considered to be maintenance and if installed will cause the area to become a Converted Wetland (CW). See item 16 for information on CW.

19. This wetland determination was completed in the : Office Field

20. This determination was: Delivered Mailed To the Person on Date: 11-30-90

NOTE: If you do not agree with this determination, you may request a reconsideration from the person that signed this form in Block 22 below. The reconsideration is a prerequisite for any further appeal. The request for the reconsideration must be in writing and must state your reasons for the request. The request must be mailed or delivered within 15 days after this determination is mailed to or otherwise made available to you. Please see reverse side of the producer's copy of this form for more information on appeals procedure.

NOTE: If you intend to convert additional land to cropland or alter any wetlands, you must initiate another Form AD-1026 at the local office of ASCS. Abandonment is where land has not been cropped, managed, or maintained for 5 years or more. You should inform SCS if you plan to produce an agricultural commodity on abandoned wetlands.

21. Remarks Wetlands may be cropped when natural conditions permit; however they cannot be drained or altered to destroy their wetland character for purposes of commodity production. Drainage systems in formed wetlands (FW) may be maintained to their original design. This determination is for USDA benefits only.

22. Signature of SCS District Conservationist

Kevin Luoma by Jmw

23. Date

11-30-90

NOT TO

- (W) Wetland
- (FW) Ditched or Filled prior to 12-23-85 but still wetland
- (PC) Converted Wetland prior to 12-23-85
- (CW) Converted Wetland after 12-23-85
- (---) Ditched prior to 12-23-85
- (---) Tiled prior to 12-23-85
- (w---) Wetland in a channel

