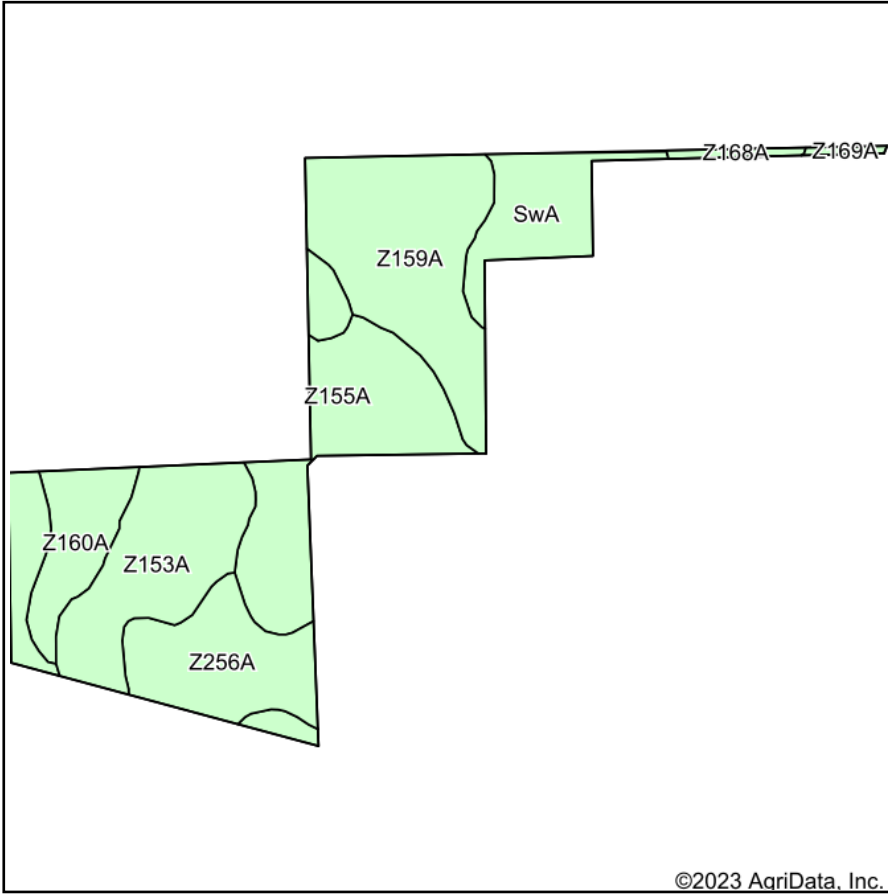
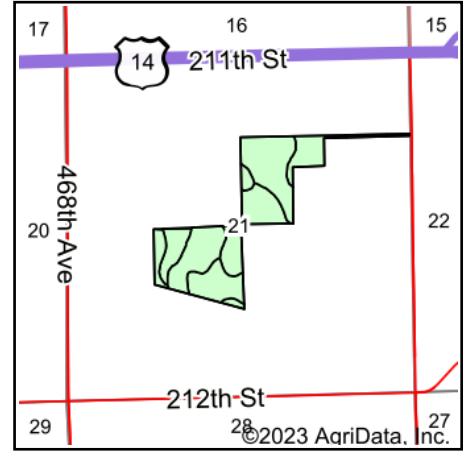


Soils Map



Soils data provided by USDA and NRCS.



State: **South Dakota**
 County: **Brookings**
 Location: **21-110N-50W**
 Township: **Brookings**
 Acres: **65.02**
 Date: **11/1/2023**

**BURLAGE
 PETERSON**

Auctioneers & Realtors, LLC

Maps Provided By:



Area Symbol: SD011, Soil Area Version: 31

Code	Soil Description	Acres	Percent of field	Non-Irr Class	Productivity Index	*n NCCPI Overall
Z159A	Divide loam, 0 to 2 percent slopes, occasionally flooded	15.28	23.5%	IIIs	54	36
Z155A	Lowe, occasionally flooded-Ludden, frequently flooded, complex, 0 to 1 percent slopes	13.54	20.8%	IVw	47	39
Z153A	Lamoure-Rauville silty clay loams, channeled, 0 to 2 percent slopes, frequently flooded	12.55	19.3%	VIw	13	23
Z256A	Ludden, moderately saline-Ludden silty clays, 0 to 1 percent slopes, frequently flooded	11.58	17.8%	IVw	42	30
SwA	Swenoda-Lanona sandy loams, 0 to 2 percent slopes	6.15	9.5%	IIs	67	54
Z160A	Moritz, occasionally flooded-Lamoure, frequently flooded, complex, 0 to 2 percent slopes	5.11	7.9%	IIIs	65	53
Z168A	Allivar sandy loam, 0 to 2 percent slopes, rarely flooded	0.52	0.8%	IIIs	29	32
Z169A	Fordtown, rarely flooded-Spottswood, occasionally flooded, loams, 0 to 2 percent slopes	0.29	0.4%	IIs	64	43
Weighted Average				3.87	44.4	*n 36.1

*n: The aggregation method is "Weighted Average using all components"

Soils data provided by USDA and NRCS.