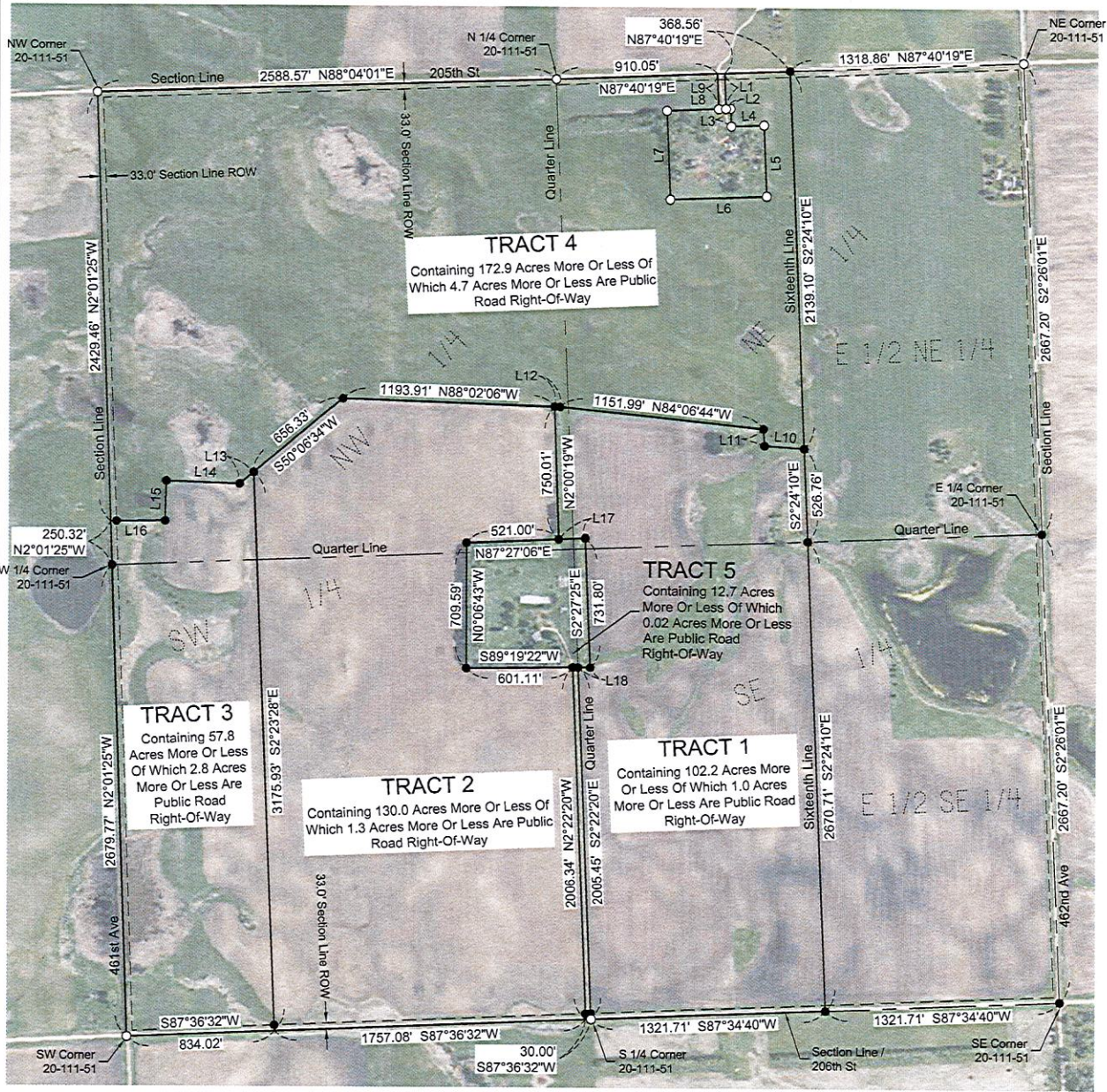


**PLAT OF**  
**TRACTS 1, 2, 3, 4 AND 5 OF OLSON ADDITION IN SECTION 20, T111N, R51W OF**  
**THE 5<sup>TH</sup> P.M., BROOKINGS COUNTY, SOUTH DAKOTA.**



**TRACT 4**  
 Containing 172.9 Acres More Or Less Of  
 Which 4.7 Acres More Or Less Are Public  
 Road Right-Of-Way

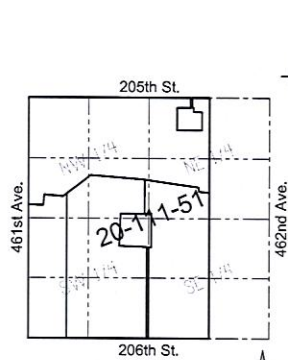
**TRACT 5**  
 Containing 12.7 Acres  
 More Or Less Of Which  
 0.02 Acres More Or Less  
 Are Public Road  
 Right-Of-Way

**TRACT 3**  
 Containing 57.8  
 Acres More Or Less  
 Of Which 2.8 Acres  
 More Or Less Are  
 Public Road  
 Right-Of-Way

**TRACT 2**  
 Containing 130.0 Acres More Or Less Of  
 Which 1.3 Acres More Or Less Are Public  
 Road Right-Of-Way

**TRACT 1**  
 Containing 102.2 Acres More  
 Or Less Of Which 1.0 Acres  
 More Or Less Are Public Road  
 Right-Of-Way

Parcel Line Table					
Line #	Length	Direction	Line #	Length	Direction
L1	199.81	S2°22'20"E	L10	225.47	N86°08'54"W
L2	26.50	N87°42'52"E	L11	93.87	N3°34'03"W
L3	100.10	S2°26'58"E	L12	31.03	N88°02'06"W
L4	183.99	S87°39'51"W	L13	102.00	S50°06'34"W
L5	400.82	S2°21'11"E	L14	414.76	N88°01'15"W
L6	543.89	S87°45'59"W	L15	224.69	S1°35'20"W
L7	500.03	N2°23'03"W	L16	305.27	S89°14'54"W
L8	293.25	N87°41'41"E	L17	149.45	S87°27'06"W
L9	199.92	N2°22'20"W	L18	68.69	N89°19'22"E



February, 2023  
 Scale: 1" = 600'  
 ○ Monument Recovered  
 ● Monument Set  
 (5/8" x 18" Capped Rebar RLS 15743)  
 Bearings are Based on Assumed Datum

Prepared By:

**CIVIL DESIGN INC**  
 Civil Engineers & Land Surveyors  
 Brookings, South Dakota  
 Ph. 605-696-3200

