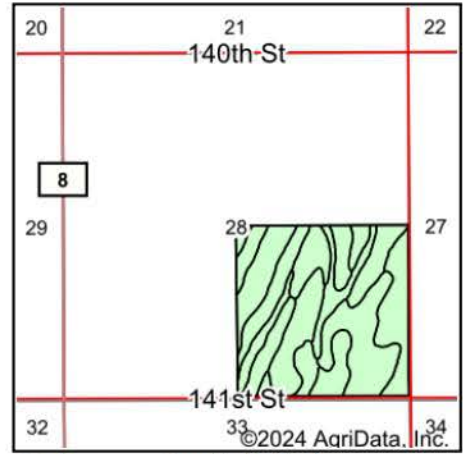
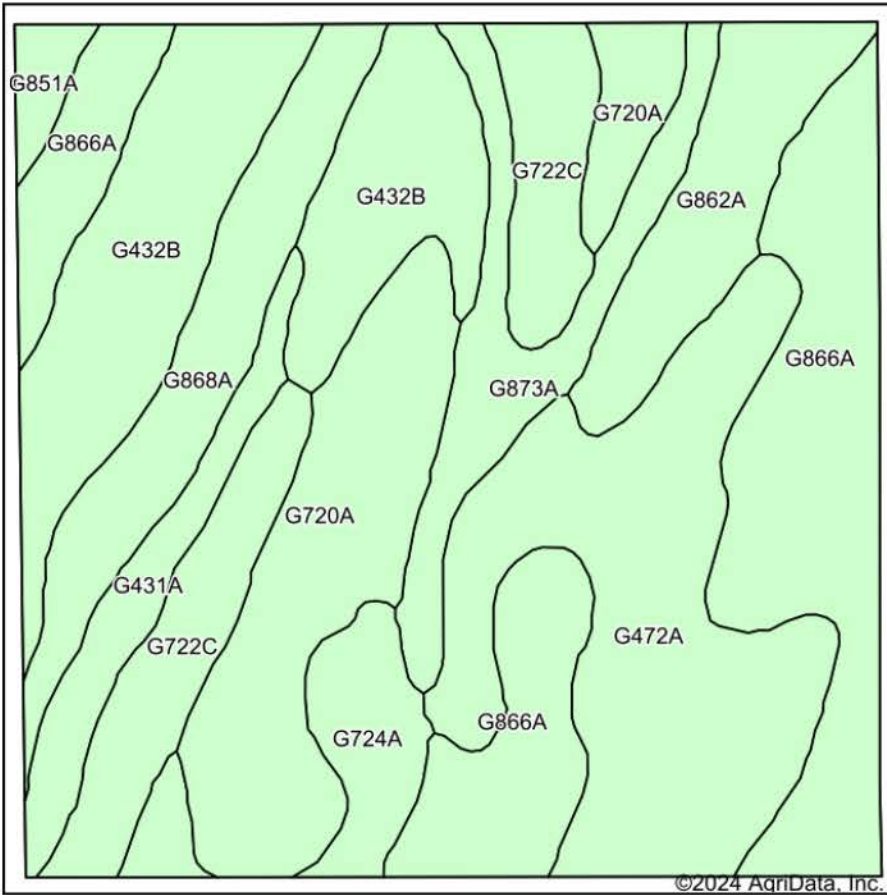


Soils Map



State: **South Dakota**
 County: **Brown**
 Location: **28-122N-61W**
 Township: **West Hanson**
 Acres: **156.85**
 Date: **2/8/2024**

**BURLAGE
 PETERSON**
 Auctioneers & Realtors, LLC

Maps Provided By:

 CUSTOMIZED ONLINE MAPPING
 © AgriData, Inc. 2023 www.AgriDataInc.com



Soils data provided by USDA and NRCS.

Area Symbol: SD013, Soil Area Version: 29

Code	Soil Description	Acres	Percent of field	Soil Drainage	Non-Irr Class *c	Range Production (lbs/acre/yr)	Productivity Index
G866A	Harmony-Aberdeen silty clay loams, 0 to 2 percent slopes	31.27	19.9%	Moderately well drained	IIs	2591	80
G472A	Aberdeen-Nahon silty clay loams, 0 to 2 percent slopes	26.48	16.9%	Moderately well drained	IIIs	2361	59
G432B	Bearden-Huffton silt loams, 1 to 6 percent slopes	23.08	14.7%	Somewhat poorly drained	IIe	3189	72
G720A	Great Bend-Beotia silt loams, 0 to 2 percent slopes	19.66	12.5%	Well drained	IIc	2888	95
G722C	Great Bend-Zell silt loams, 6 to 9 percent slopes	13.17	8.4%	Well drained	IIIe	2663	66
G868A	Winship-Tonka silt loams, 0 to 1 percent slopes	11.03	7.0%	Somewhat poorly drained	IIw	4454	71
G873A	Beotia-Winship silt loams, 0 to 2 percent slopes	9.37	6.0%	Well drained	IIc	3316	93
G862A	Harmony-Beotia silt loams, 0 to 2 percent slopes	9.08	5.8%	Moderately well drained	IIs	2771	92
G724A	Great Bend-Putney silt loams, 0 to 2 percent slopes	6.28	4.0%	Well drained	IIc	2865	87
G431A	Bearden silt loam, 0 to 2 percent slopes	5.86	3.7%	Somewhat poorly drained	IIe	3996	81
G851A	Nahon-Aberdeen-Exline silt loams, 0 to 2 percent slopes	1.57	1.0%	Moderately well drained	IVs	2099	46
Weighted Average					2.27	2926.7	76.8

*c: Using Capabilities Class Dominant Condition Aggregation Method

Soils data provided by USDA and NRCS.