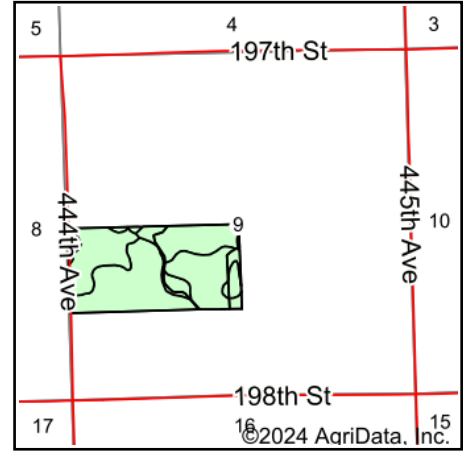
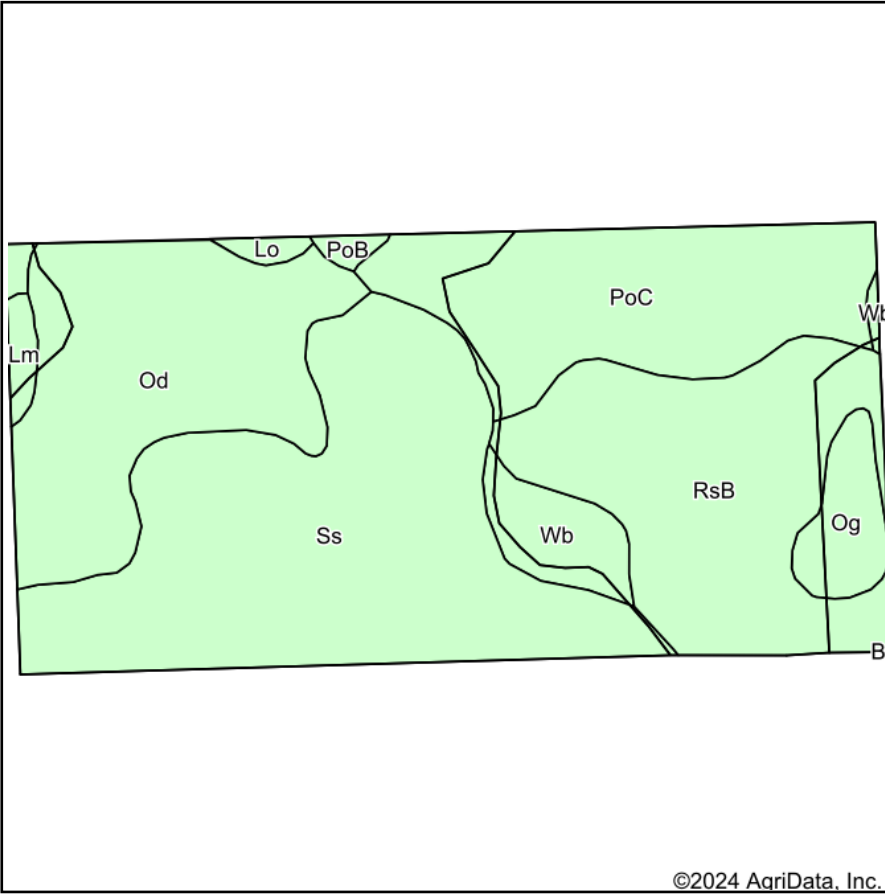


Soils Map



State: **South Dakota**
 County: **Kingsbury**
 Location: **9-112N-54W**
 Township: **Hartland**
 Acres: **77.91**
 Date: **6/13/2024**

**BURLAGE
 PETERSON**

Auctioneers & Realtors, LLC

Maps Provided By:



Soils data provided by USDA and NRCS.

Area Symbol: SD077, Soil Area Version: 27

Code	Soil Description	Acres	Percent of field	Soil Drainage	Non-Irr Class *c	Range Production (lbs/acre/yr)	Productivity Index
Ss	Southam silty clay loam, 0 to 1 percent slopes	25.95	33.3%	Very poorly drained	VIIIw	6972	10
RsB	Renshaw-Sioux complex, coteau, 2 to 6 percent slopes	16.12	20.7%	Somewhat excessively drained	IVs	2393	34
Od	Oldham silty clay loam	15.39	19.8%	Very poorly drained	Vw	6180	34
PoC	Poinsett-Buse-Waubay complex, 2 to 9 percent slopes	13.50	17.3%	Well drained	IIIe	3640	69
Wb	Waubay-Badger silty clay loams, 0 to 2 percent slopes	2.80	3.6%	Moderately well drained	Iw	4879	91
Og	Orthents, gravelly	2.48	3.2%	Excessively drained	VIIIs	1368	3
Lm	Lamoure silty clay loam	0.65	0.8%	Somewhat poorly drained	IIIw	5266	68
PoB	Poinsett-Buse-Waubay complex, 1 to 6 percent slopes	0.62	0.8%	Well drained	Ile	3720	81
Lo	Lowe loam	0.40	0.5%	Poorly drained	IVw	5500	54
Weighted Average					5.35	4989.5	33.9

*c: Using Capabilities Class Dominant Condition Aggregation Method

Soils data provided by USDA and NRCS.