



United States Department of Agriculture

Tract 2

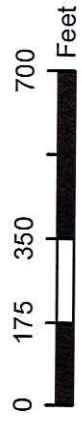
# Lincoln County, Minnesota

# Farm 5262

# Tract 1220

## 2023 Program Year

Map Created April 03, 2023



- Unless otherwise noted:  
 Shares are 100% operator  
 Crops are non-irrigated  
 Corn = yellow for grain  
 Soybeans = common soybeans for grain  
 Wheat = HRS, HRW = Grain  
 Sunflower = Oil, Non-Oil = Grain  
 Oats and Barley = Spring for grain  
 Rye = for grain  
 Peas = process  
 Alfalfa, Mixed Forage AGM, GMA, IGS = for forage  
 Beans = Dry Edible  
 NAG = for GZ  
 Canola = Spring for seed

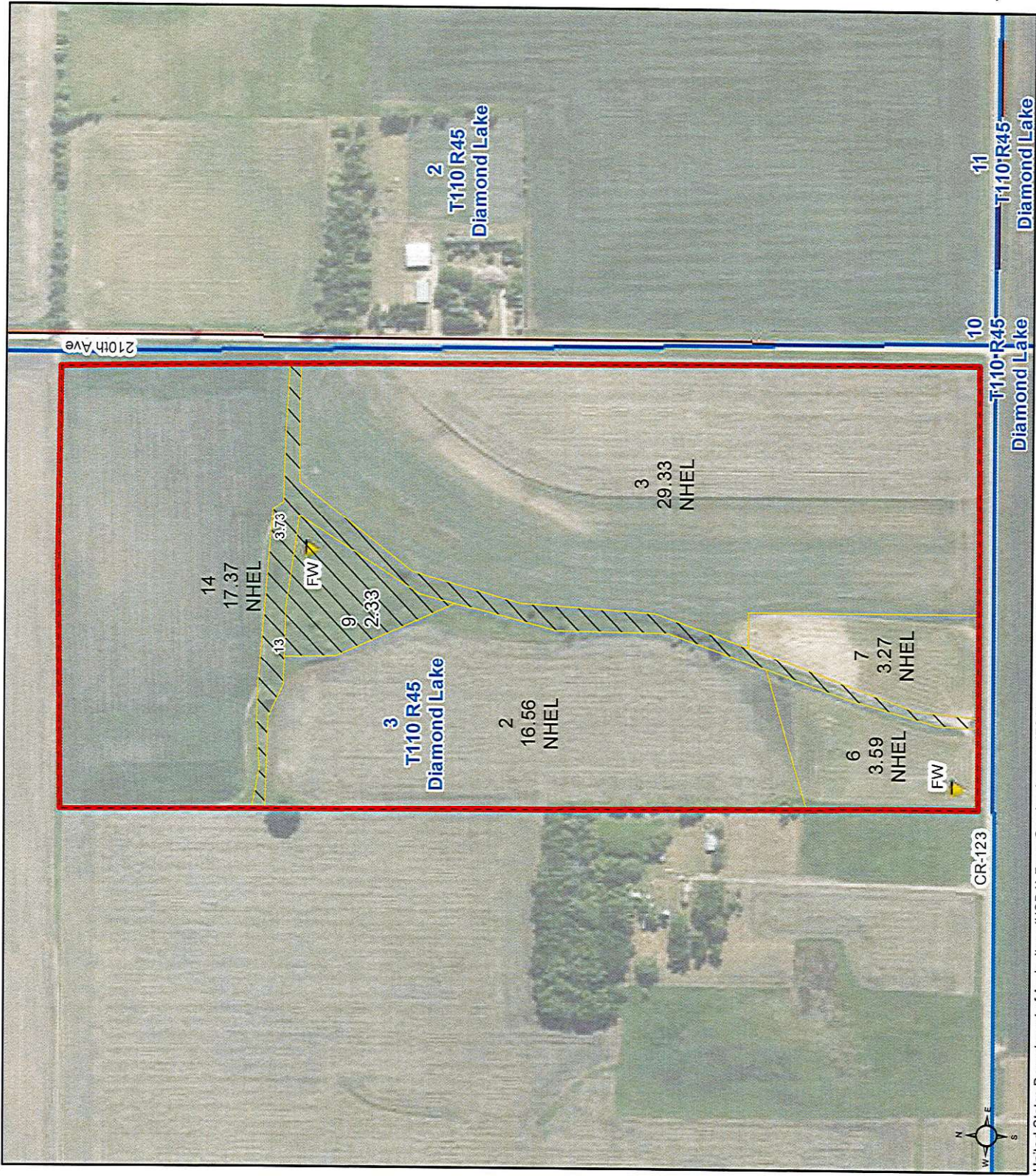
### Common Land Unit

- Non-Cropland
- Cropland
- Tract Boundary

### Wetland Determination Identifiers

- Restricted Use
- Limited Restrictions
- Exempt from Conservation
- Compliance Provisions

Tract Cropland Total: 70.12 acres



United States Department of Agriculture (USDA) Farm Service Agency (FSA) maps are for FSA Program administration only. This map does not represent a legal survey or reflect actual ownership, rather it depicts the information provided directly from the producer and/or National Agricultural Imagery Program (NAIP) imagery. The producer accepts the data 'as is' and assumes all risks associated with its use. USDA-FSA assumes no responsibility for actual or consequential damage incurred as a result of any user's reliance on this data outside FSA Programs. Wetland identifiers do not represent the size, shape, or specific determination of the area. Refer to your original determination (CPA-026 and attached maps) for exact boundaries and determinations or contact USDA Natural Resources Conservation Service (NRCS). This map displays the 2021 NAIP imagery.