

# Brookings County, SD

## Soils

Symbol	Acres	\$/Acre	Adjust	Class Description	Slope	Subclass	Rating	CR/GR	Map Symbol
050	2.67	\$6,071.93	0	DIVIDE LOAM UNDR	0-2		0.628	C	DN
051	5.53	\$12,575.95	0	DIVIDE LOAM UNDR	0-2		0.628	C	DN
106	16	\$33,373.26	0	LAMOURE SILTY CLAY LOAM	0-1		0.576	C	LK
107	0.5	\$1,042.91	0	LAMOURE SILTY CLAY LOAM	0-1		0.576	C	LK
108	9.84	\$10,489.02	0	LAMOURERAUVILLE SICL, CH	0-1		0.492	G	LM
153	5.46	\$4,223.14	0	RAUVILLE SILTY CLAY LOAM,	0-1		0.357	G	RA
<b>Total</b>	<b>40.00</b>	<b>\$74,700.00</b>				<b>Weighted Avg Rating</b>	<b>0.536</b>		

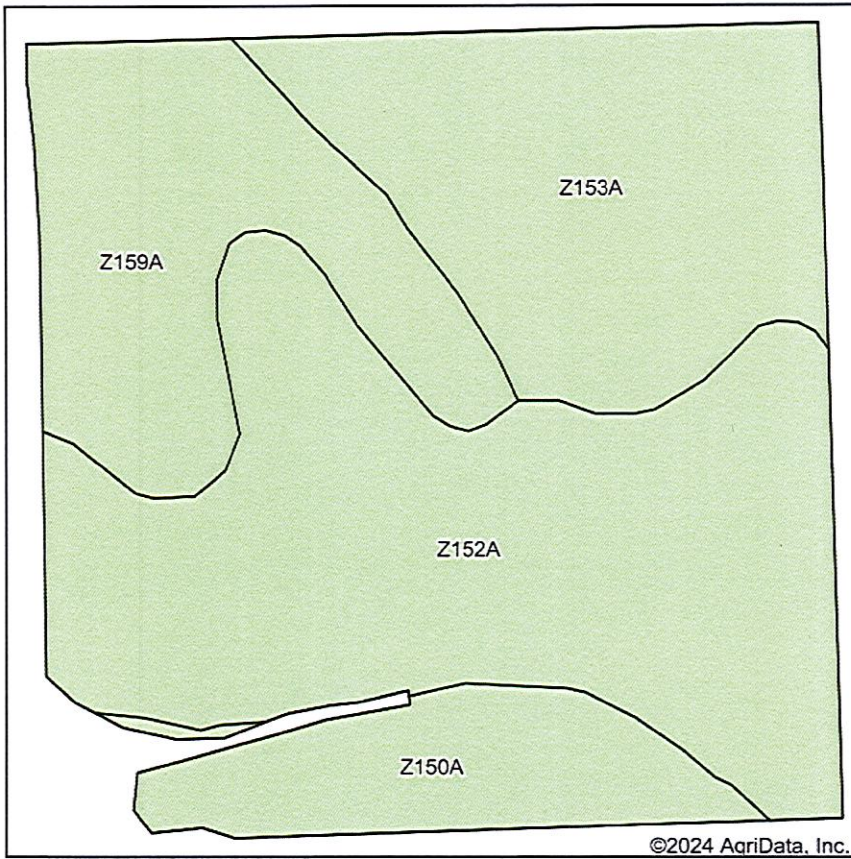
Brookings County digital cadastral data are a representation of recorded plats and surveys for use within the Geographic Information System for purposes of data access and analysis. These and other digital data do not replace or modify land surveys, deeds, and/or other legal instruments defining land ownership or use.

[User Privacy Policy](#) | [GDPR Privacy Notice](#)  
 Last Data Upload: 7/1/2024, 12:52:16 AM

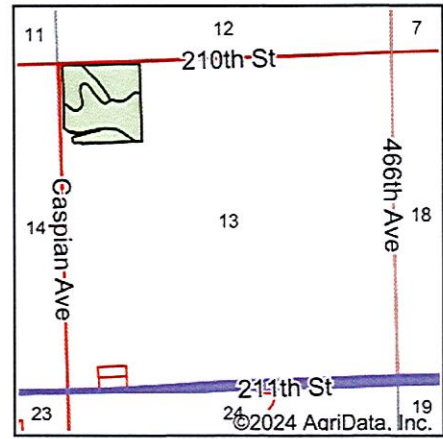
[Contact Us](#)

Developed by  
 Schneider  
 GEOSPATIAL

# Soils Map



Soils data provided by USDA and NRCS.



State: **South Dakota**  
 County: **Brookings**  
 Location: **13-110N-51W**  
 Township: **Volga**  
 Acres: **36.05**  
 Date: **6/27/2024**

**BURLAGE  
 PETERSON**  
 Auctioneers & Realtors, LLC

Maps Provided By:  
  
 CUSTOMIZED ONLINE MAPPING  
 © AgriData, Inc. 2023 www.AgriDataInc.com



Area Symbol: SD011, Soil Area Version: 31

Code	Soil Description	Acres	Percent of field	Non-Irr Class	Productivity Index	*n NCCPI Overall
Z152A	Lamoure silty clay loam, coteau, 0 to 1 percent slopes, occasionally flooded	15.86	44.0%	IIIw	67	61
Z153A	Lamoure-Rauville silty clay loams, channeled, 0 to 2 percent slopes, frequently flooded	9.06	25.1%	VIw	13	23
Z159A	Divide loam, 0 to 2 percent slopes, occasionally flooded	7.20	20.0%	IIIs	54	36
Z150A	Rauville silty clay loam, coteau, 0 to 1 percent slopes, frequently flooded	3.93	10.9%	Vw	23	42
<b>Weighted Average</b>				<b>3.97</b>	<b>46</b>	<b>*n 44.4</b>

\*n: The aggregation method is "Weighted Average using all components"