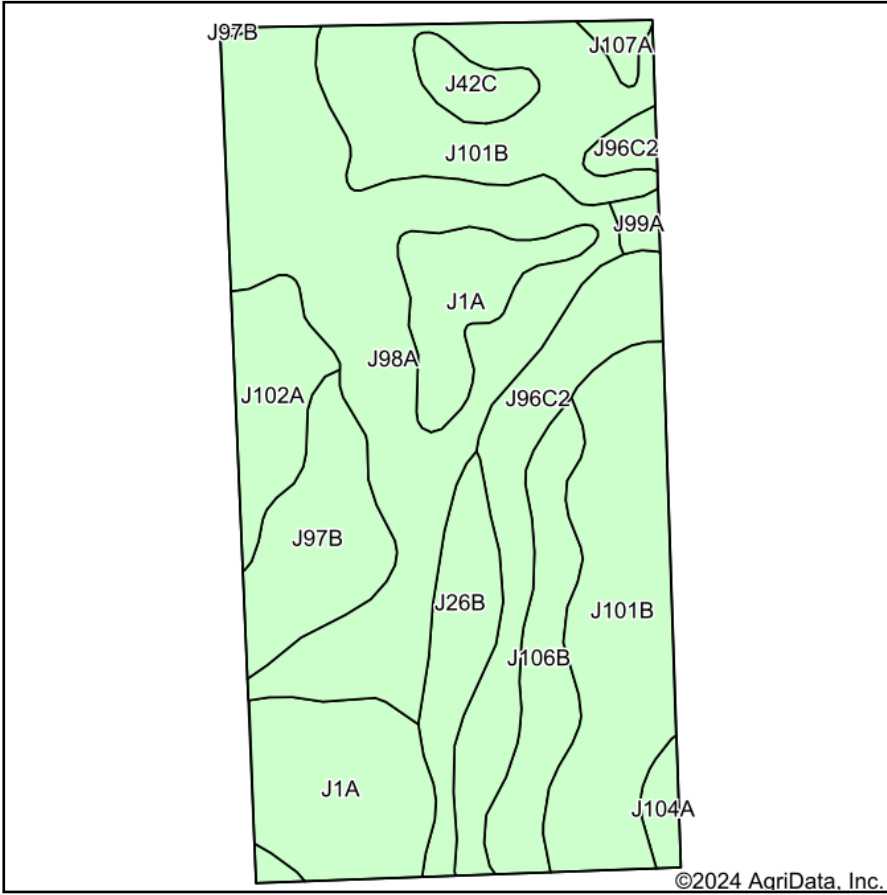
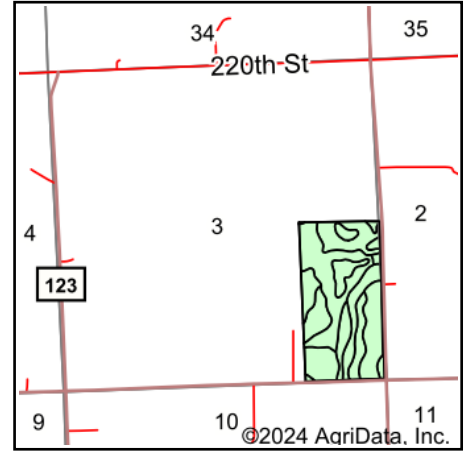


Soils Map



Soils data provided by USDA and NRCS.



State: **Minnesota**
 County: **Lincoln**
 Location: **3-110N-45W**
 Township: **Diamond Lake**
 Acres: **80**
 Date: **7/9/2024**

**BURLAGE
 PETERSON**
 Auctioneers & Realtors, LLC

Maps Provided By:



Area Symbol: MN081, Soil Area Version: 22

Code	Soil Description	Acres	Percent of field	Non-Irr Class	Productivity Index	*n NCCPI Overall
J98A	Parnell silty clay loam, 0 to 2 percent slopes	20.59	26.0%	IIw	93	65
J101B	Hokans-Svea complex, 1 to 4 percent slopes	19.72	24.6%	IIe	98	68
J1A	Parnell silty clay loam, depressional, 0 to 1 percent slopes	10.41	13.0%	IIIw	86	62
J96C2	Barnes-Buse complex, 6 to 12 percent slopes, moderately eroded	7.78	9.7%	Ve	80	59
J97B	Singsaas-Oak Lake complex, 1 to 6 percent slopes	5.48	6.8%	IIe	97	66
J106B	Barnes, occasional saturation-Buse-Svea complex, 1 to 6 percent slopes	4.91	6.1%	IIe	88	66
J26B	Darnen loam, 2 to 6 percent slopes	3.93	4.9%	IIe	99	72
J102A	Oak Lake silty clay loam, 1 to 3 percent slopes	3.83	4.8%	Ie	99	70
J42C	Sandberg-Arvilla complex, 6 to 12 percent slopes	1.44	1.8%	Vs	38	31
J104A	Svea loam, 1 to 3 percent slopes	0.84	1.0%	Ie	99	70
J107A	Lakepark-Roliss-Parnell, depressional, complex, 0 to 3 percent slopes	0.56	0.7%	IIw	93	71
J99A	Lakepark clay loam, 0 to 3 percent slopes, overwash	0.51	0.6%	IIw	98	71
Weighted Average				2.42	91.7	*n 65

*n: The aggregation method is "Weighted Average using all components"

Soils data provided by USDA and NRCS.