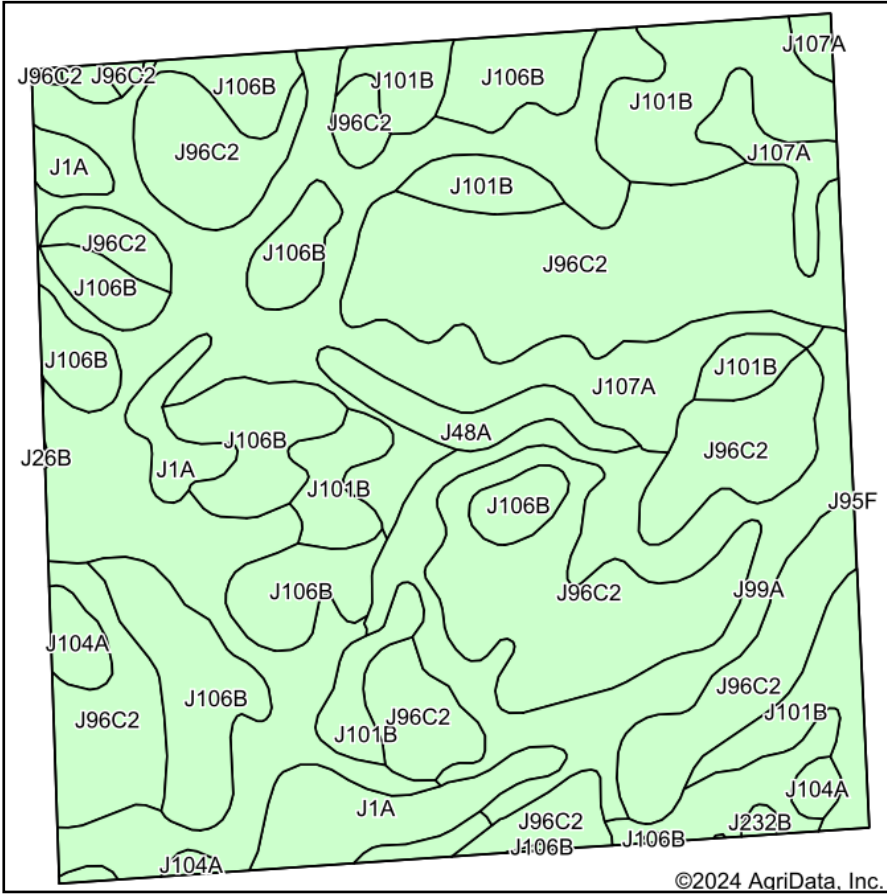
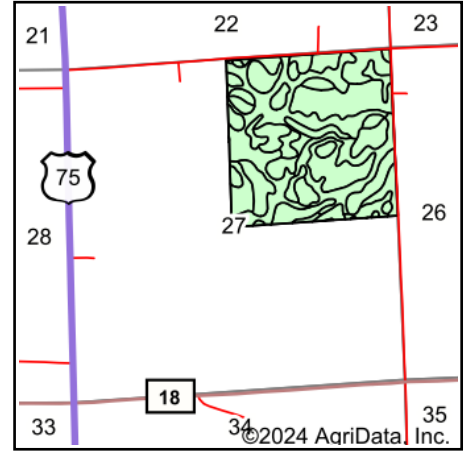


# Soils Map



Soils data provided by USDA and NRCS.



State: **Minnesota**  
 County: **Lincoln**  
 Location: **27-113N-45W**  
 Township: **Marble**  
 Acres: **160.68**  
 Date: **8/5/2024**

**BURLAGE  
 PETERSON**  
 Auctioneers & Realtors, LLC

Maps Provided By:



Area Symbol: MN081, Soil Area Version: 22

Code	Soil Description	Acres	Percent of field	Non-Irr Class	Productivity Index	*n NCCPI Overall
J96C2	Barnes-Buse complex, 6 to 12 percent slopes, moderately eroded	52.07	32.4%	Ve	80	59
J107A	Lakepark-Roliss-Parnell, depressional, complex, 0 to 3 percent slopes	42.24	26.3%	llw	93	71
J106B	Barnes, occasional saturation-Buse-Svea complex, 1 to 6 percent slopes	22.04	13.7%	lle	88	66
J101B	Hokans-Svea complex, 1 to 4 percent slopes	18.04	11.2%	lle	98	68
J99A	Lakepark clay loam, 0 to 3 percent slopes, overwash	13.75	8.6%	llw	98	71
J1A	Parnell silty clay loam, depressional, 0 to 1 percent slopes	7.22	4.5%	lllw	86	62
J48A	Southam silty clay loam, 0 to 1 percent slopes	2.72	1.7%	Vlllw	5	15
J104A	Svea loam, 1 to 3 percent slopes	1.97	1.2%	le	99	70
J26B	Darnen loam, 2 to 6 percent slopes	0.41	0.3%	lle	99	72
J232B	Barnes, occasional saturation-Buse-Arvilla complex, 2 to 6 percent slopes	0.22	0.1%	llle	74	58
<b>Weighted Average</b>				<b>3.11</b>	<b>87.3</b>	<b>*n 64.7</b>

\*n: The aggregation method is "Weighted Average using all components"

Soils data provided by USDA and NRCS.