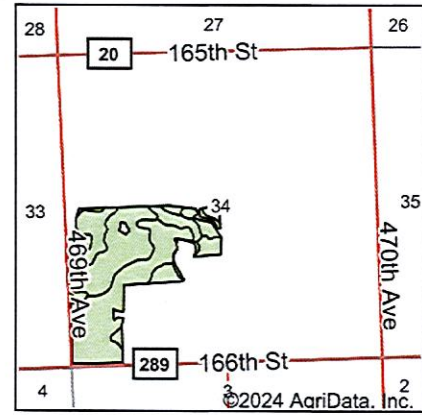
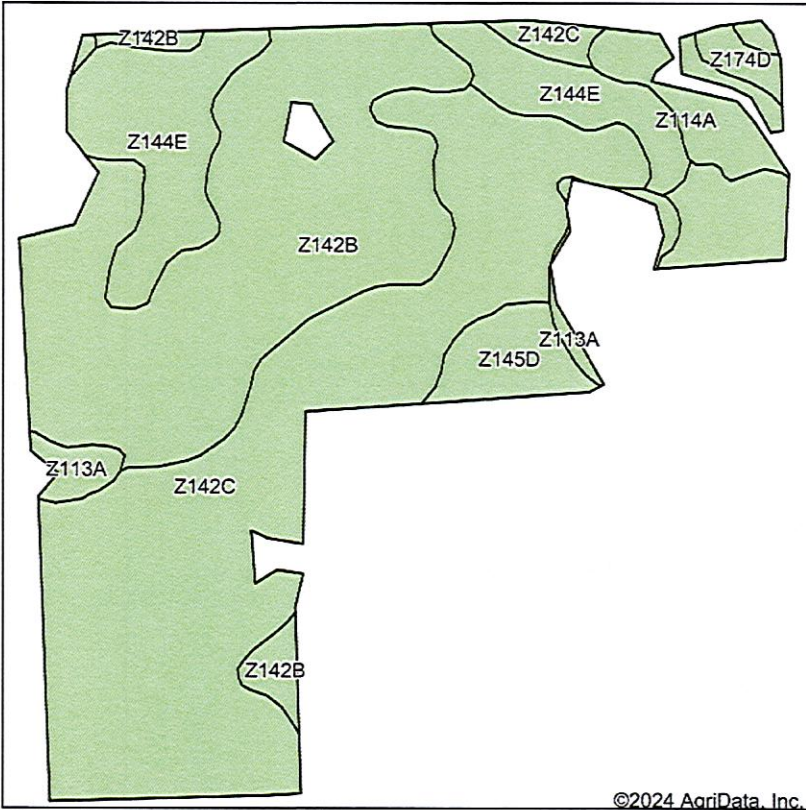


# Soils Map



State: **South Dakota**  
 County: **Grant**  
 Location: **34-118N-50W**  
 Township: **Troy**  
 Acres: **90.12**  
 Date: **5/28/2024**

**BURLAGE PETERSON**  
 Auctioneers & Realtors, LLC

Maps Provided By:



Area Symbol: SD051, Soil Area Version: 25

Code	Soil Description	Acres	Percent of field	Non-Irr Class	Productivity Index	*n NCCPI Overall
Z142C	Barnes-Buse-Svea loams, 2 to 9 percent slopes	36.75	40.8%	IIIe	64	65
Z142B	Barnes-Buse-Svea loams, 1 to 6 percent slopes	29.59	32.8%	Ile	77	66
Z144E	Buse-Barnes loams, coteau, 9 to 20 percent slopes	11.52	12.8%	Ve	41	50
Z145D	Buse-Barnes loams, coteau, 2 to 15 percent slopes, very stony	5.74	6.4%	VIIIs	9	42
Z114A	Hamerly-Tonka complex, coteau, 0 to 2 percent slopes	3.62	4.0%	IIIIs	66	61
Z113A	Vallers-Parnell complex, coteau, 0 to 2 percent slopes	1.98	2.2%	IVw	43	48
Z174D	Sioux-Renshaw complex, coteau, 9 to 15 percent slopes	0.92	1.0%	VIIs	21	34
<b>Weighted Average</b>				<b>3.23</b>	<b>61</b>	<b>*n 61.1</b>

\*n: The aggregation method is "Weighted Average using all components"