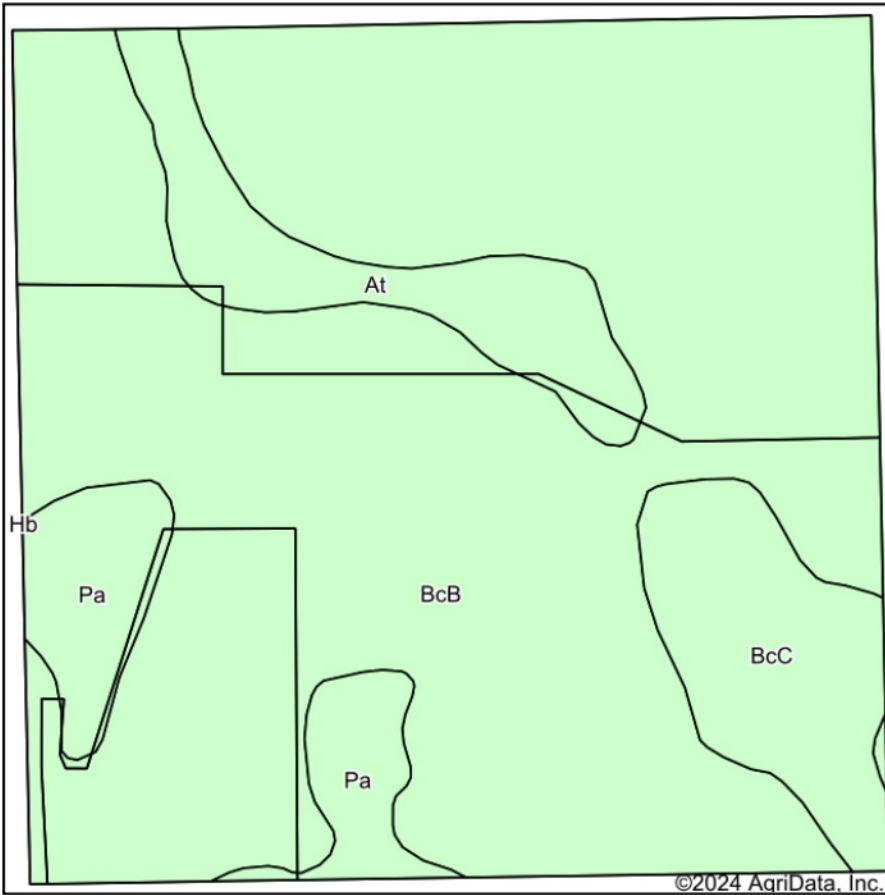
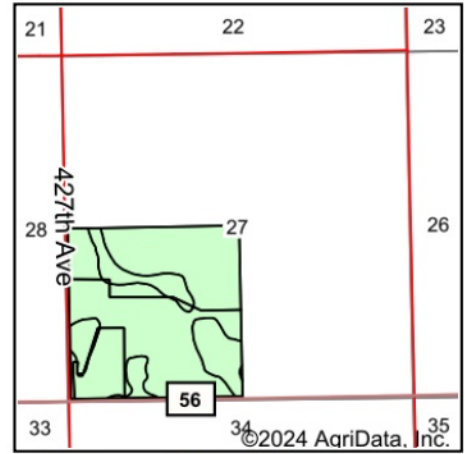


Soils Map



Soils data provided by USDA and NRCS.



State: **South Dakota**
 County: **Clark**
 Location: **27-113N-57W**
 Township: **Collins**
 Acres: **156.28**
 Date: **7/1/2024**

**BURLAGE
 PETERSON**
 Auctioneers & Realtors, LLC

Maps Provided By:



Area Symbol: SD025, Soil Area Version: 26

Code	Soil Description	Acres	Percent of field	Soil Drainage	Non-Irr Class *c	Range Production (lbs/acre/yr)	Productivity Index
BcB	Barnes-Buse-Svea loams, 1 to 6 percent slopes	122.80	78.6%	Well drained	Ile	3696	77
BcC	Barnes-Buse-Svea loams, 2 to 9 percent slopes	12.62	8.1%	Well drained	IIle	3592	64
At	Aastad-Tonka complex	10.86	6.9%	Moderately well drained	Iw	4727	83
Pa	Parnell silty clay loam	10.00	6.4%	Very poorly drained	Vw	6712	31
Weighted Average					2.20	3952.2	73.4

*c: Using Capabilities Class Dominant Condition Aggregation Method