

See Page 2 for non-discriminatory Statements.

Abbreviated 156 Farm Record

Operator Name : XXXXXXXXXX
 CRP Contract Number(s) : None
 Recon ID : None
 Transferred From : None
 ARCPLC G//F Eligibility : Eligible

Farm Land Data

Farmland	Cropland	DCP Cropland	WBP	EWP	WRP	GRP	Sugarcane	Farm Status	Number Of Tracts
155.72	145.41	145.41	0.00	0.00	0.00	0.00	0.0	Active	1
State Conservation	Other Conservation	Effective DCP Cropland	Double Cropped		CRP	MPL	DCP Ag.Rel. Activity	SOD	
0.00	0.00	145.41	0.00		0.00	0.00	0.00	0.00	

Crop Election Choice

ARC Individual	ARC County	Price Loss Coverage
None	CORN, SOYBN	None

DCP Crop Data

Crop Name	Base Acres	CCC-505 CRP Reduction Acres	PLC Yield	HIP
Corn	55.15	0.00	130	
Soybeans	55.15	0.00	36	
TOTAL	110.30	0.00		

NOTES

Tract Number : 4009
 Description : NE27 MARBLE
 FSA Physical Location : MINNESOTA/LINCOLN
 ANSI Physical Location : MINNESOTA/LINCOLN
 BIA Unit Range Number :
 HEL Status : HEL field on tract.Conservation system being actively applied
 Wetland Status : Tract contains a wetland or farmed wetland
 WL Violations : None
 Owners : RUS FARMS REAL ESTATE LLC
 Other Producers : None
 Recon ID : None

Tract Land Data

Farm Land	Cropland	DCP Cropland	WBP	EWP	WRP	GRP	Sugarcane
155.72	145.41	145.41	0.00	0.00	0.00	0.00	0.0

MINNESOTA
 LINCOLN
 Form: FSA-156EZ



Abbreviated 156 Farm Record

FARM : 5015
 Prepared : 7/18/24 8:55 AM CST
 Crop Year : 2024

Tract 4009 Continued ...

State Conservation	Other Conservation	Effective DCP Cropland	Double Cropped	CRP	MPL	DCP Ag. Rel Activity	SOD
0.00	0.00	145.41	0.00	0.00	0.00	0.00	0.00

DCP Crop Data

Crop Name	Base Acres	CCC-505 CRP Reduction Acres	PLC Yield
Corn	55.15	0.00	130
Soybeans	55.15	0.00	36
TOTAL	110.30	0.00	

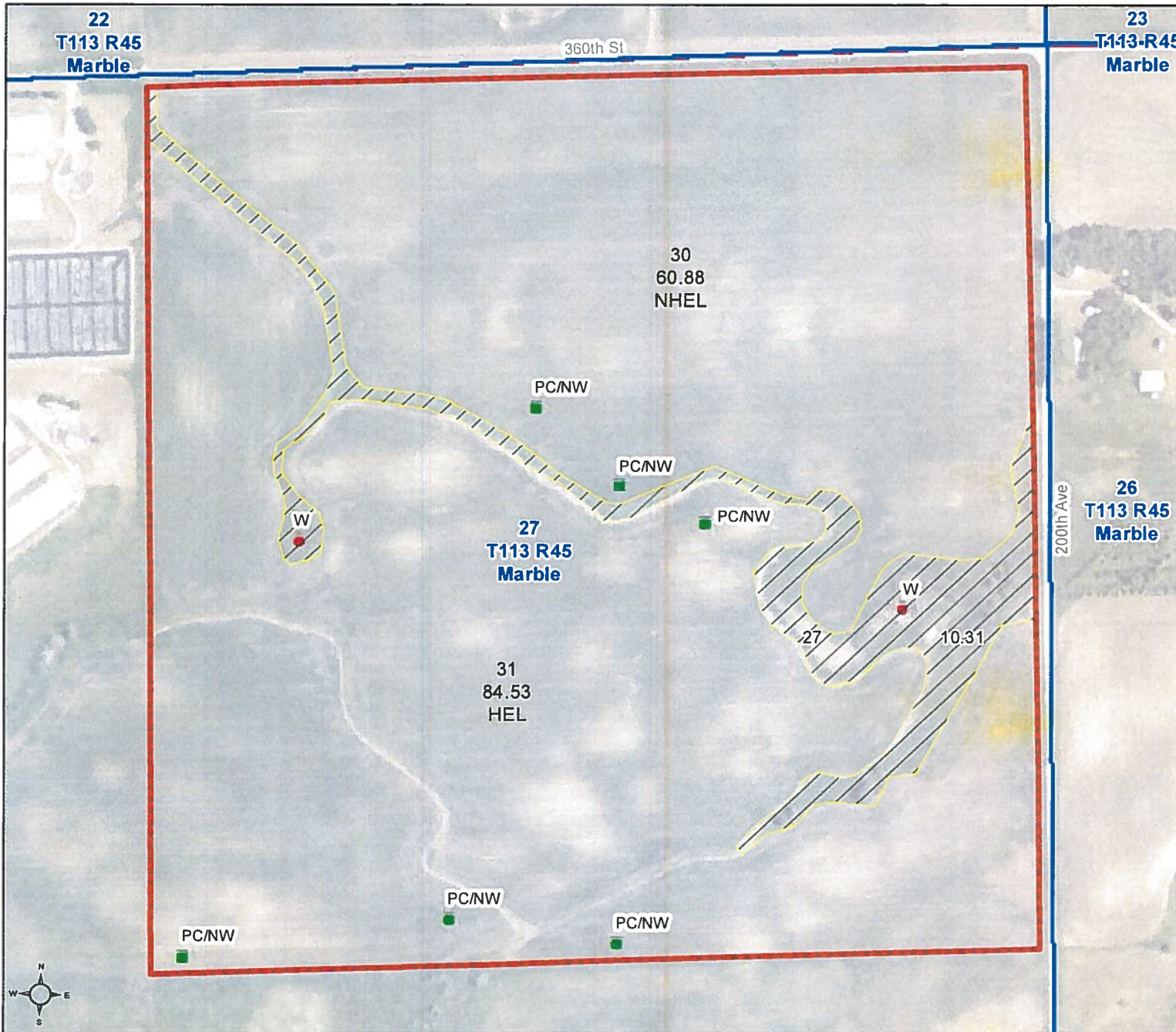
NOTES

--

In accordance with Federal civil rights law and U.S. Department of Agriculture (USDA) civil rights regulations and policies, the USDA, its Agencies, offices, and employees, and institutions participating in or administering USDA programs are prohibited from discriminating based on race, color, national origin, religion, sex, gender identity (including gender expression), sexual orientation, disability, age, marital status, family/parental status, income derived from a public assistance program, political beliefs, or reprisal or retaliation for prior civil rights activity, in any program or activity conducted or funded by USDA (not all bases apply to all programs). Remedies and complaint filing deadlines vary by program or incident.

Persons with disabilities who require alternative means of communication for program information (e.g., Braille, large print, audiotape, American Sign Language, etc.) should contact the responsible Agency or USDA's TARGET Center at (202) 720-2600 (voice and TTY) or contact USDA through the Federal Relay Service at (800) 877-8339. Additionally, program information may be made available in languages other than English.

To file a program discrimination complaint, complete the USDA Program Discrimination Complaint Form, AD-3027, found online at http://www.ascr.usda.gov/complaint_filing_cust.html and at any USDA office or write a letter addressed to USDA and provide in the letter all of the information requested in the form. To request a copy of the complaint form, call (866) 632-9992. Submit your completed form or letter to USDA by: (1) mail, U.S. Department of Agriculture Office of the Assistant Secretary for Civil Rights 1400 Independence Avenue, SW Washington, D.C. 20250-9410; (2) fax: (202) 690-7442, or (3) e-mail: program.intake@usda.gov. USDA is an equal opportunity provider, employer, and lender.



- Unless otherwise noted:
 Shares are 100% operator
 Crops are non-irrigated
 Corn = yellow for grain
 Soybeans = common soybeans for grain
 Wheat = HRS, HRW = Grain
 Sunflower = Oil, Non-Oil = Grain
 Oats and Barley = Spring for grain
 Rye = for grain
 Peas = process
 Alfalfa, Mixed Forage AGM, GMA, IGS = for forage
 Beans = Dry Edible
 NAG = for GZ
 Canola = Spring for seed

Common Land Unit

- Non-Cropland
- Cropland
- Tract Boundary

Wetland Determination Identifiers

- Restricted Use
- Limited Restrictions
- Exempt from Conservation Compliance Provisions

Tract Cropland Total: 145.41 acres

3/25/93

**HIGHLY ERODIBLE LAND AND WETLAND
CONSERVATION DETERMINATION**

Lincoln

HBL Ag.

7582 N 1/2 Sec. 27 Marble

SECTION I - HIGHLY ERODIBLE LAND

	FIELD NO.(s)	TOTAL ACRES
6. Is soil survey now available for making a highly erodible land determination? Yes <input checked="" type="checkbox"/> No <input type="checkbox"/>		
7. Are there highly erodible soil map units on this farm? Yes <input checked="" type="checkbox"/> No <input type="checkbox"/>		
8. List highly erodible fields that, according to ASCS records, were used to produce an agricultural commodity in any crop year during 1981-1985.	5, 6, 9	157.80
9. List highly erodible fields that have been or will be converted for the production of agricultural commodities and, according to ASCS records, were not used for this purpose in any crop year during 1981-1985; and were not enrolled in a USDA set-aside or diversion program.	—	—
10. This Highly Erodible Land determination was completed in the: Office <input checked="" type="checkbox"/> Field <input type="checkbox"/>		

SECTION II - WETLAND

	FIELD NO.(s)	TOTAL ACRES
11. Are there hydric soils on this farm? Yes <input checked="" type="checkbox"/> No <input type="checkbox"/>		
12. Wetlands (W), including abandoned wetlands, or Farmed Wetlands (FW) or Farmed Wetlands Pasture (FWP). Wetlands may be farmed under natural conditions. Farmed Wetlands and Farmed Wetlands Pasture may be farmed and maintained in the same manner as they were prior to December 23, 1985, as long as they are not abandoned.	2, 3, N.C.	5.5 Ac.
13. Prior Converted Cropland (PC). Wetlands that were converted prior to December 23, 1985. The use, management, drainage, and alteration of prior converted cropland (PC) are not subject to the wetland conservation provisions unless the area reverts to wetland as a result of abandonment.	—	—
14. Artificial Wetlands (AW). Artificial wetlands includes irrigation-induced wetlands. These wetlands are not subject to the wetland conservation provisions.	N.C.	0.5 Ac.
15. Minimal Effect Wetlands (MW). These wetlands are to be farmed according to the minimal-effect agreement signed at the time the minimal-effect determination was made.	—	—
16. Mitigation Wetlands (MIW). Wetlands on which a person is actively mitigating a frequently cropped area or a wetland converted between December 23, 1985 and November 28, 1990.	—	—
17. Restoration with Violation (RVW-year). A restored wetland that was in violation as a result of conversion after November 28, 1990, or the planting of an agricultural commodity or forage crop.	—	—
18. Restoration without Violation (RSW). A restored wetland converted between December 23, 1985 and November 28, 1990, on which an agricultural commodity has not been planted.	—	—
19. Replacement Wetlands (RPW). Wetlands which are converted for purposes other than to increase production, where the wetland values are being replaced at a second site.	—	—
20. Good Faith Wetlands (GFW+year). Wetlands on which ASCS has determined a violation to be in good faith and the wetland has been restored.	—	—
21. Converted Wetlands (CW). Wetlands converted after December 23, 1985 and prior to November 28, 1990. In any year that an agricultural commodity is planted on these Converted Wetlands, you will be ineligible for USDA benefits.	—	—
22. Converted Wetland (CW+year). Wetlands converted after November 28, 1990. You will be ineligible for USDA program benefits until this wetland is restored.	—	—
23. Converted Wetland Non-Agricultural use (CWNA). Wetlands that are converted for trees, fish production, shrubs, cranberries, vineyards or building and road construction.	—	—
24. Converted Wetland Technical Error (CWTE). Wetlands that were converted as a result of incorrect determination by SCS.	—	—

VOID
8-9-97
Tract Split

25. The planned alteration measures on wetlands in fields _____ are considered maintenance and are in compliance with FSA.
26. The planned alteration measures on wetlands in fields _____ are not considered to be maintenance and if installed will cause the area to become a Converted Wetland (CW). See item 22 for information on CW+year.
27. The wetland determination was completed in the office field and was delivered mailed to the person on 3/25/93
28. Remarks.

29. I certify that the above determination is correct and adequate for use in determining eligibility for USDA program benefits, and that wetland hydrology, hydric soils, and hydrophytic vegetation under normal circumstances exist on all areas outlined as Wetlands, Farmed Wetlands, and Farmed Wetlands Pasture.

30. Signature of SCS District Conservationist

Mark Starnes

31. Date

3/25/93

Request Completed because of field determination by ASCS. Mark

TRACT NUMBER	W = WETLAND	FW = FARMED WETLAND	NW = NON-WETLAND	INT = MULTIPLE TRACT NUMBER	ICW = CONVERTED WETLAND	INA = NON-AGRICULTURAL	IAW = ARTIFICIAL WETLAND	HEL = HIGHLY ERODIBLE LAND	INHEL = NON-HIGHLY ERODIBLE	PC = PRIOR CONVERTED WETLAND	ECW = EXEMPT (COMMENCED) CONVERTED WETLAND	MW = MINIMAL EFFECT WETLAND (EXEMPT)	MWC, MWM, MWR = SPECIAL COND. (SEE FCJ)	PHOTO NO.
COUNTY	NOT TO BE REPRODUCED											CROP	YR.	

Lincoln

SCALE | May 1971 | YR.

E.3

