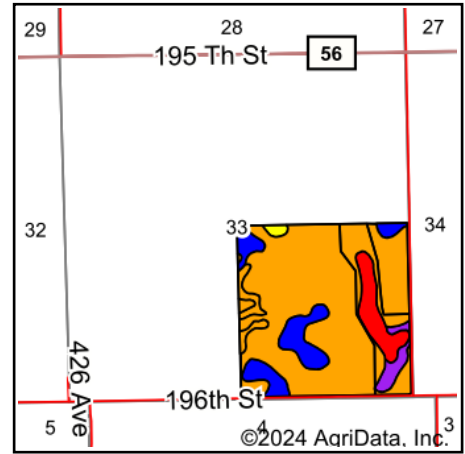
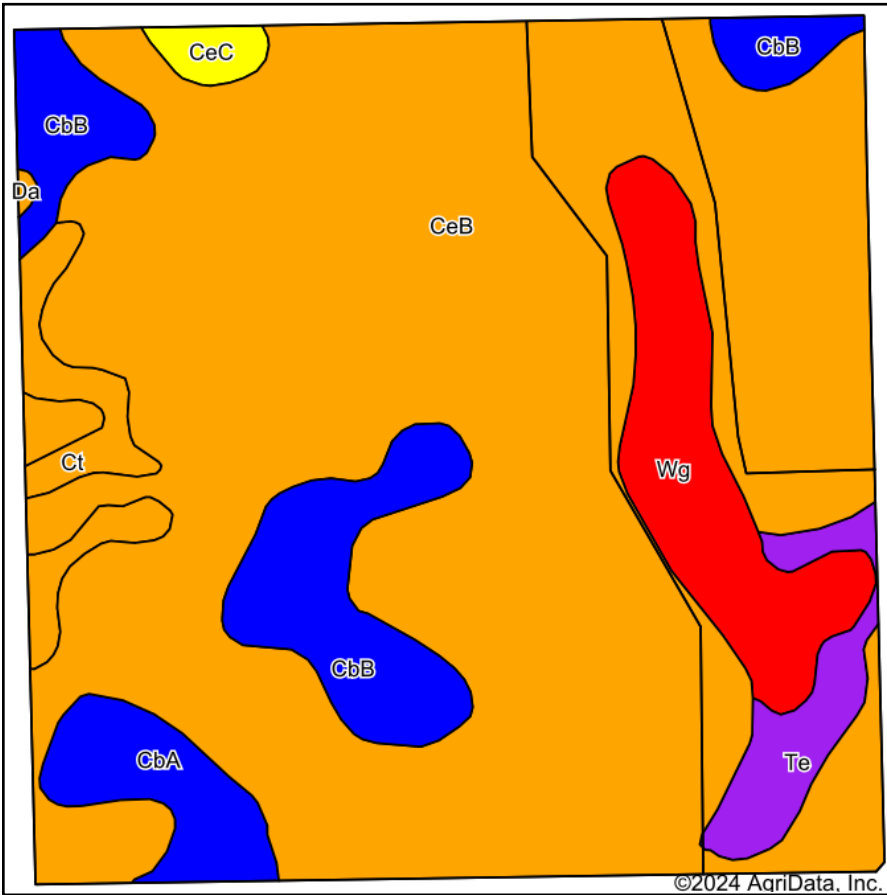


LaBore Soils Map



State: **South Dakota**
 County: **Clark**
 Location: **33-113N-57W**
 Township: **Collins**
 Acres: **157.07**
 Date: **9/23/2024**



Soils data provided by USDA and NRCS.

Area Symbol: SD025, Soil Area Version: 26

Code	Soil Description	Acres	Percent of field	PI Legend	Non-Irr Class *c	Productivity Index
CeB	Clarno-Ethan-Bonilla loams, 1 to 6 percent slopes	116.46	74.0%		Ile	78
CbB	Clarno-Bonilla loams, 1 to 6 percent slopes	13.67	8.7%		Ile	84
Wg	Worthing silty clay loam, 0 to 1 percent slopes	11.40	7.3%		Vw	30
CbA	Clarno-Bonilla loams, 0 to 2 percent slopes	5.13	3.3%		Ilc	88
Te	Tetonka silt loam, 0 to 1 percent slopes	4.53	2.9%		IVw	56
Ct	Crossplain-Tetonka complex	4.51	2.9%		Ilw	74
CeC	Clarno-Ethan-Bonilla loams, 2 to 9 percent slopes	1.23	0.8%		IIIe	69
Da	Davison-Crossplain complex	0.14	0.1%		Ile	79
Weighted Average					2.28	74.5

*c: Using Capabilities Class Dominant Condition Aggregation Method

Soils data provided by USDA and NRCS.