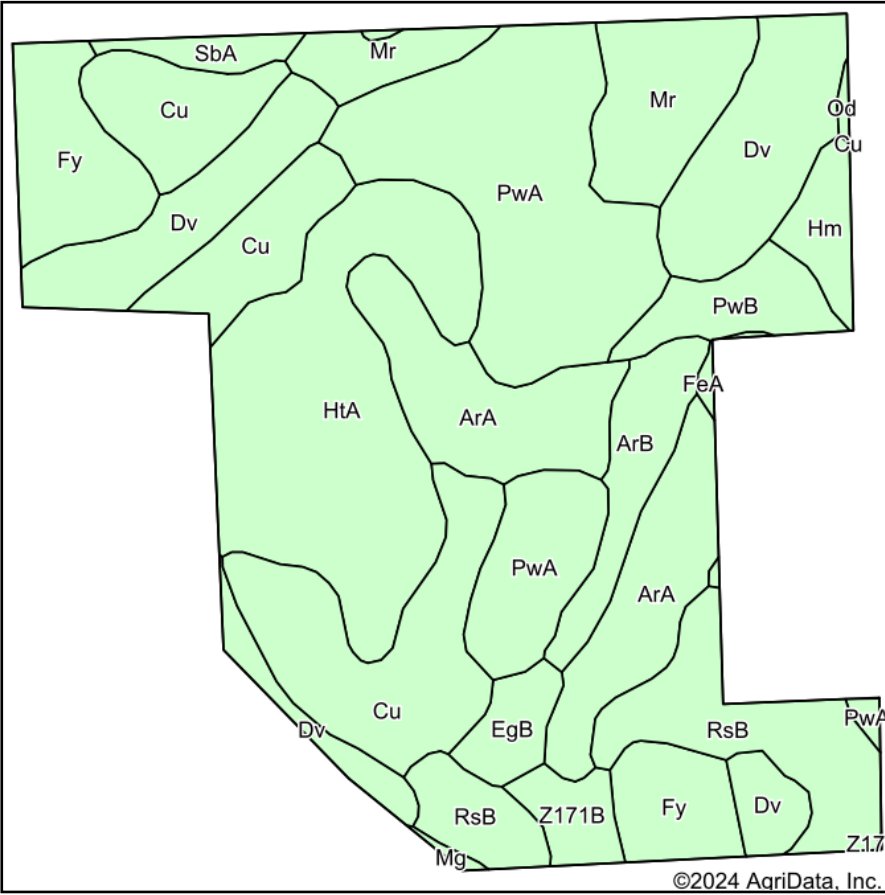
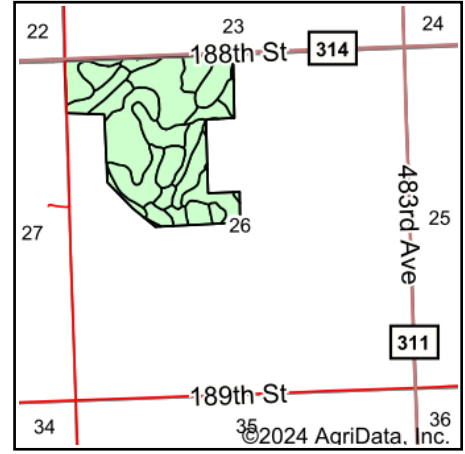


**TRACT 1**

**Soils Map**



Soils data provided by USDA and NRCS.



State: **South Dakota**  
 County: **Deuel**  
 Location: **26-114N-48W**  
 Township: **Norden**  
 Acres: **116.29**  
 Date: **9/25/2024**

**BURLAGE PETERSON**  
 Auctioneers & Realtors, LLC

Maps Provided By:  
  
 © AgriData, Inc. 2023 [www.AgriDataInc.com](http://www.AgriDataInc.com)



Area Symbol: SD039, Soil Area Version: 26

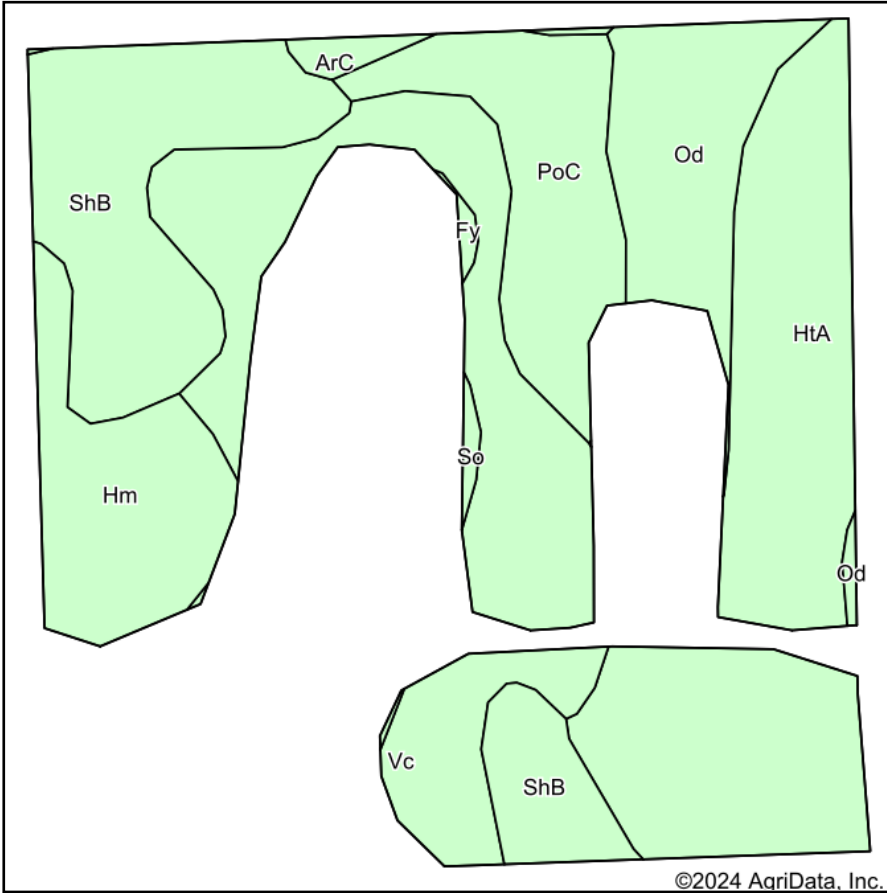
Code	Soil Description	Acres	Percent of field	Non-Irr Class	Productivity Index	*n NCCPI Overall
PwA	Poinsett-Waubay silty clay loams, 0 to 2 percent slopes	19.40	16.9%	Is	93	75
HtA	Hegne-Fulda silty clay loams	17.01	14.6%	IIw	80	47
Cu	Cubden silty clay loam, 0 to 2 percent slopes	16.11	13.9%	IIIs	77	69
Dv	Divide loam	14.54	12.5%	IIIIs	55	43
ArA	Arvilla sandy loam, 0 to 2 percent slopes	12.05	10.4%	IIIIs	24	36
RsB	Renshaw-Sioux complex, coteau, 2 to 6 percent slopes	8.53	7.3%	Vs	34	36
Fy	Fulda silty clay loam	7.68	6.6%	IIw	80	50
Mr	Moritz-Lamoure complex	7.13	6.1%	IIIIs	75	52
ArB	Arvilla sandy loam, 2 to 6 percent slopes	3.64	3.1%	IVs	21	35
PwB	Poinsett-Waubay silty clay loams, 1 to 6 percent slopes	2.95	2.5%	Ile	89	73
Hm	Hamerly-Badger complex, 0 to 2 percent slopes	1.89	1.6%	IIs	78	62
EgB	Egeland-Embden complex, 2 to 6 percent slopes	1.84	1.6%	IIIle	56	48
Z171B	Renshaw-Fordville loams, coteau, 2 to 6 percent slopes	1.77	1.5%	IVs	43	41
SbA	Sinai silty clay, 0 to 2 percent slopes	1.16	1.0%	IIs	80	47
FeA	Fordville loam, coteau, 0 to 2 percent slopes	0.27	0.2%	IIs	59	52
Mg	Marysland loam	0.16	0.1%	IVw	46	33
Od	Oldham silty clay loam	0.16	0.1%	Vw	29	41
<b>Weighted Average</b>				<b>2.46</b>	<b>66.4</b>	<b>*n 53.2</b>

\*n: The aggregation method is "Weighted Average using all components"

Soils data provided by USDA and NRCS.

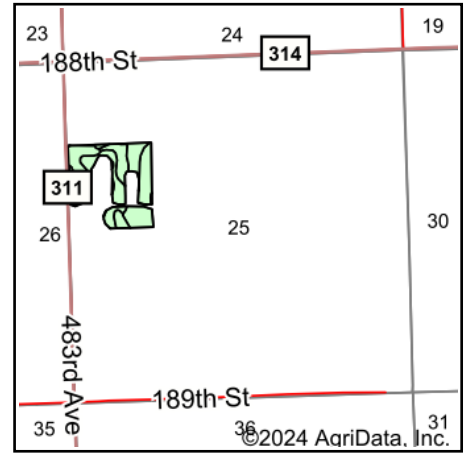
**TRACT 2**

**Soils Map**



©2024 AgriData, Inc.

Soils data provided by USDA and NRCS.



State: **South Dakota**  
 County: **Deuel**  
 Location: **25-114N-48W**  
 Township: **Norden**  
 Acres: **25.1**  
 Date: **9/25/2024**

**BURLAGE PETERSON**  
 Auctioneers & Realtors, LLC

Maps Provided By:  
  
 CUSTOMIZED ONLINE MAPPING  
 © AgriData, Inc. 2023 www.AgriDataInc.com



Area Symbol: SD039, Soil Area Version: 26

Code	Soil Description	Acres	Percent of field	Non-Irr Class	Productivity Index	*n NCCPI Overall
HtA	Hegne-Fulda silty clay loams	6.96	27.7%	IIw	80	47
Vc	Vallers loam	5.41	21.6%	IVw	49	54
ShB	Singsaas-Waubay silty clay loams, 1 to 6 percent slopes	4.72	18.8%	Ile	87	57
PoC	Poinsett silty clay loam, 6 to 9 percent slopes	2.71	10.8%	IIle	77	58
Hm	Hamerly-Badger complex, 0 to 2 percent slopes	2.52	10.0%	IIs	78	62
Od	Oldham silty clay loam	2.36	9.4%	Vw	29	41
ArC	Arvilla sandy loam, 6 to 9 percent slopes	0.23	0.9%	IVe	14	35
So	Southam silty clay loam, 0 to 1 percent slopes	0.12	0.5%	VIIIw	10	35
Fy	Fulda silty clay loam	0.07	0.3%	IIw	80	50
<b>Weighted Average</b>				<b>2.87</b>	<b>68.4</b>	<b>*n 52.4</b>

\*n: The aggregation method is "Weighted Average using all components"