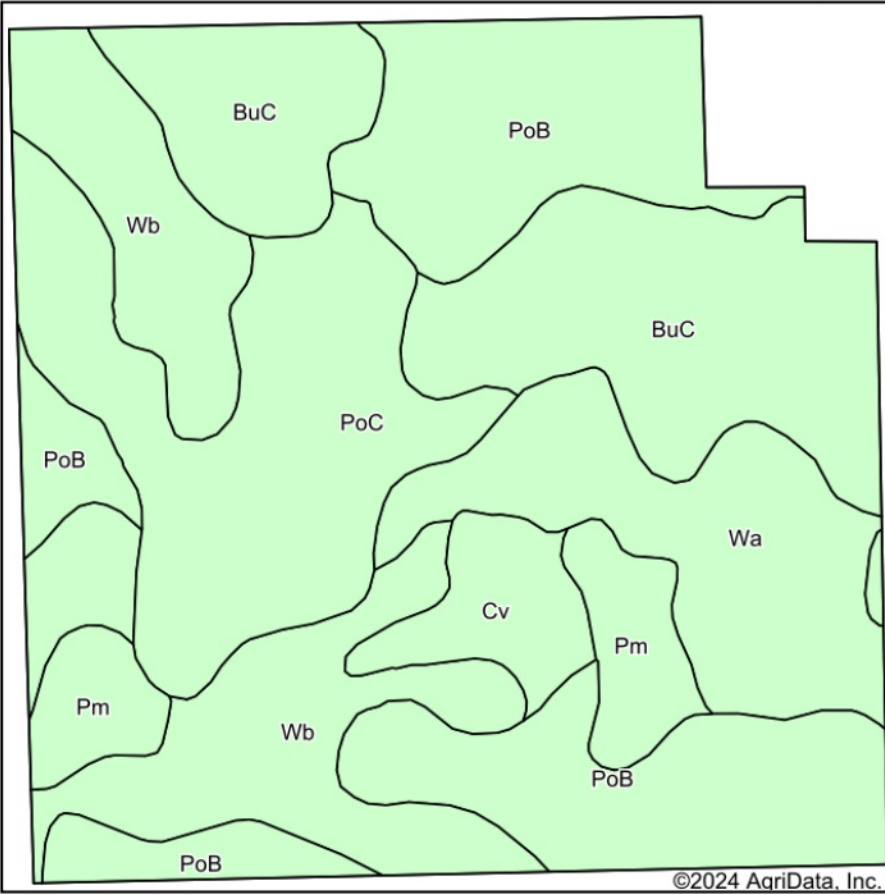
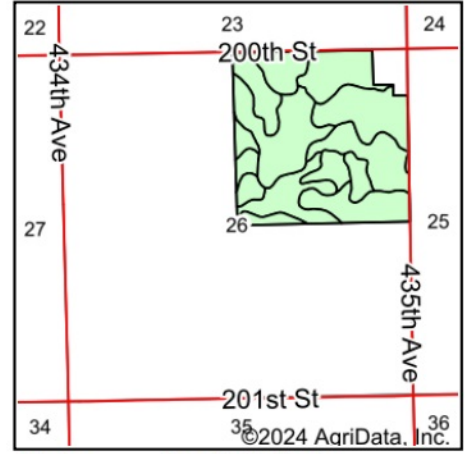


Soils Map



Soils data provided by USDA and NRCS.



State: **South Dakota**
 County: **Kingsbury**
 Location: **26-112N-56W**
 Township: **Spirit Lake**
 Acres: **152.5**
 Date: **8/5/2024**

**BURLAGE
 PETERSON**
 Auctioneers & Realtors, LLC

Maps Provided By:



Area Symbol: SD077, Soil Area Version: 27

Code	Soil Description	Acres	Percent of field	Soil Drainage	Non-Irr Class *c	Range Production (lbs/acre/yr)	Productivity Index
PoB	Poinsett-Buse-Waubay complex, 1 to 6 percent slopes	37.61	24.6%	Well drained	Ile	3720	81
BuC	Buse-Barnes loams, 6 to 9 percent slopes	29.97	19.7%	Well drained	IVe	3364	60
Wb	Waubay-Badger silty clay loams, 0 to 2 percent slopes	27.75	18.2%	Moderately well drained	Iw	4879	91
PoC	Poinsett-Buse-Waubay complex, 2 to 9 percent slopes	26.18	17.2%	Well drained	IIIe	3640	69
Wa	Waubay silty clay loam, 0 to 2 percent slopes	17.59	11.5%	Moderately well drained	Iw	4556	98
Pm	Playmoor silty clay loam	7.91	5.2%	Poorly drained	IVw	4484	33
Cv	Cubden-Badger silty clay loams, coteau, 0 to 2 percent slopes	5.49	3.6%	Somewhat poorly drained	IIIs	4745	81
Weighted Average					2.37	4020.2	76.1

*c: Using Capabilities Class Dominant Condition Aggregation Method

Soils data provided by USDA and NRCS.