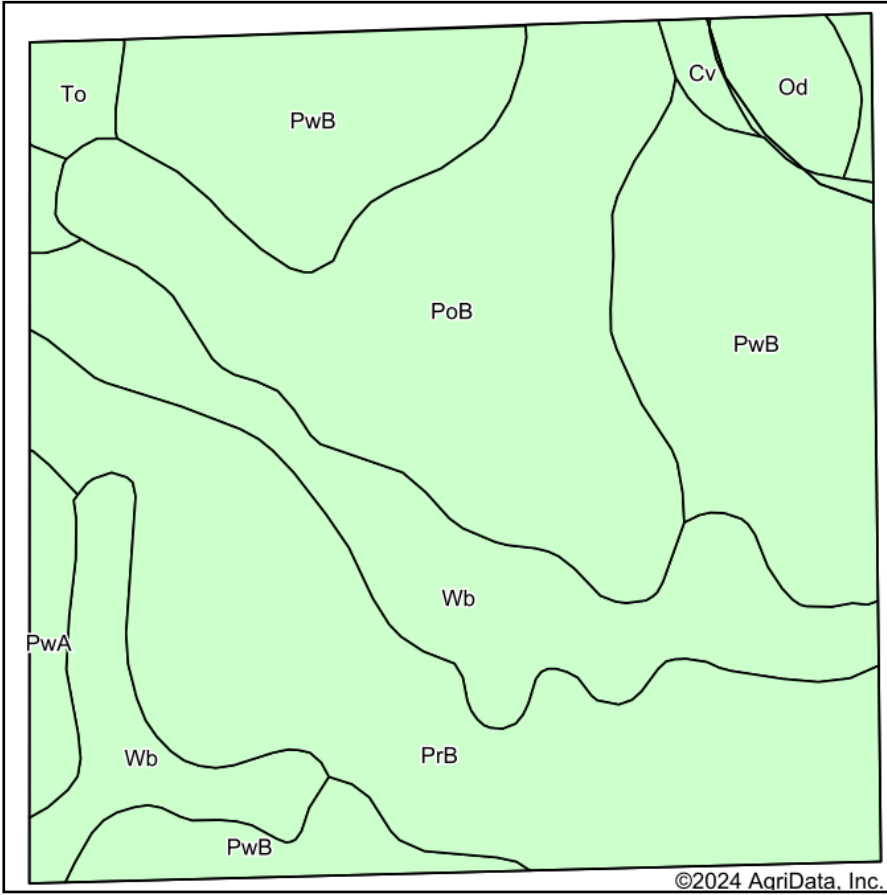
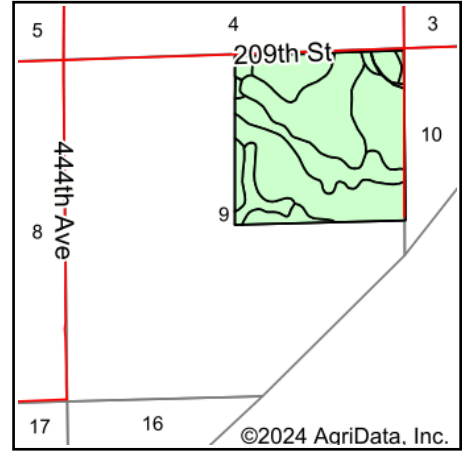


# Soils Map



Soils data provided by USDA and NRCS.



State: **South Dakota**  
 County: **Kingsbury**  
 Location: **9-110N-54W**  
 Township: **Baker**  
 Acres: **159.38**  
 Date: **9/16/2024**

**BURLAGE  
 PETERSON**  
 Auctioneers & Realtors, LLC

Maps Provided By:



Area Symbol: SD077, Soil Area Version: 27

Code	Soil Description	Acres	Percent of field	Non-Irr Class	Productivity Index	*n NCCPI Overall
PwB	Poinsett-Waubay silty clay loams, 1 to 6 percent slopes	42.34	26.6%	Ile	89	72
PrB	Poinsett-Rusklyn-Waubay silty clay loams, 1 to 6 percent slopes	39.55	24.8%	Ile	84	70
PoB	Poinsett-Buse-Waubay complex, 1 to 6 percent slopes	37.17	23.3%	Ile	81	68
Wb	Waubay-Badger silty clay loams, 0 to 2 percent slopes	29.91	18.8%	Iw	91	67
Od	Oldham silty clay loam	3.90	2.4%	Vw	34	38
PwA	Poinsett-Waubay silty clay loams, 0 to 2 percent slopes	3.27	2.1%	Is	93	73
To	Tonka silty clay loam, 0 to 1 percent slopes	2.12	1.3%	IVw	58	29
Cv	Cubden-Badger silty clay loams, coteau, 0 to 2 percent slopes	1.12	0.7%	Ils	81	57
<b>Weighted Average</b>				<b>1.89</b>	<b>84.5</b>	<b>*n 68.1</b>

\*n: The aggregation method is "Weighted Average using all components"