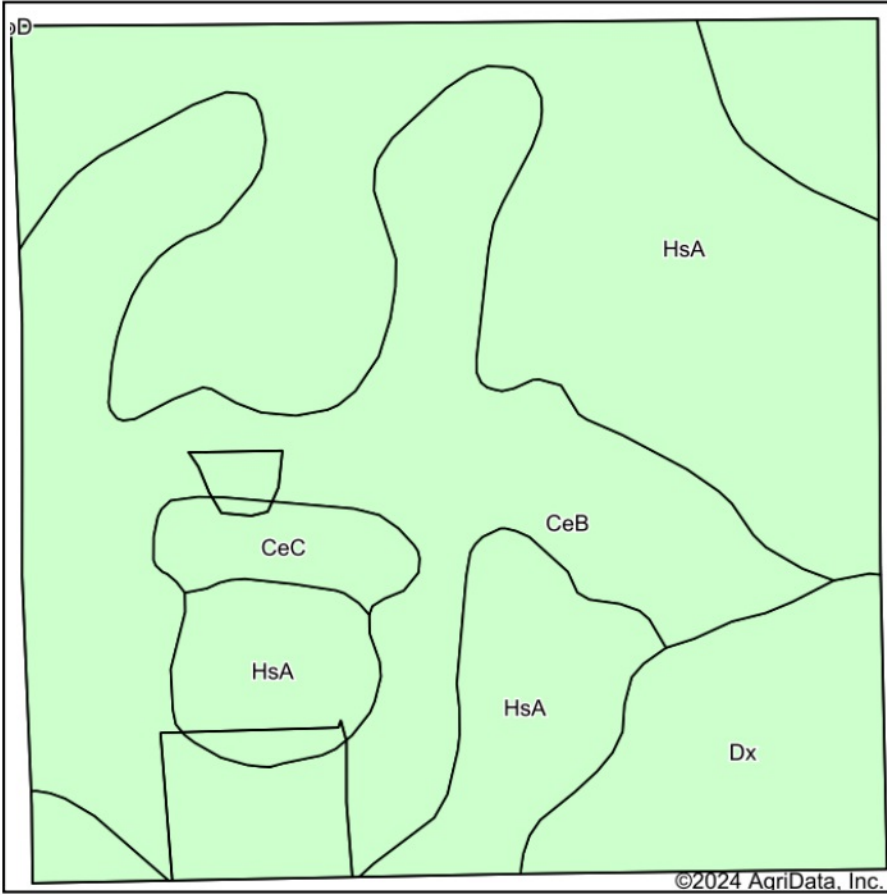
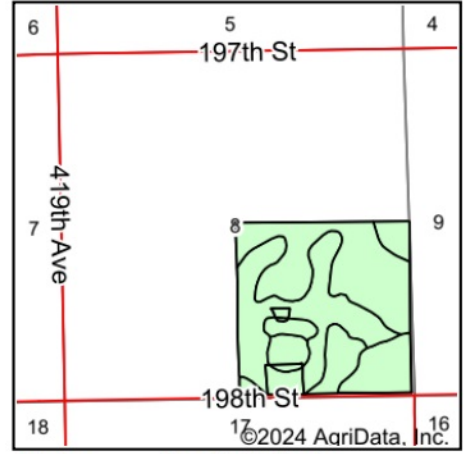


Soils Map



Soils data provided by USDA and NRCS.



State: **South Dakota**
 County: **Kingsbury**
 Location: **8-112N-58W**
 Township: **Le Sueur**
 Acres: **158.2**
 Date: **8/6/2024**

**BURLAGE
 PETERSON**
 Auctioneers & Realtors, LLC

Maps Provided By:



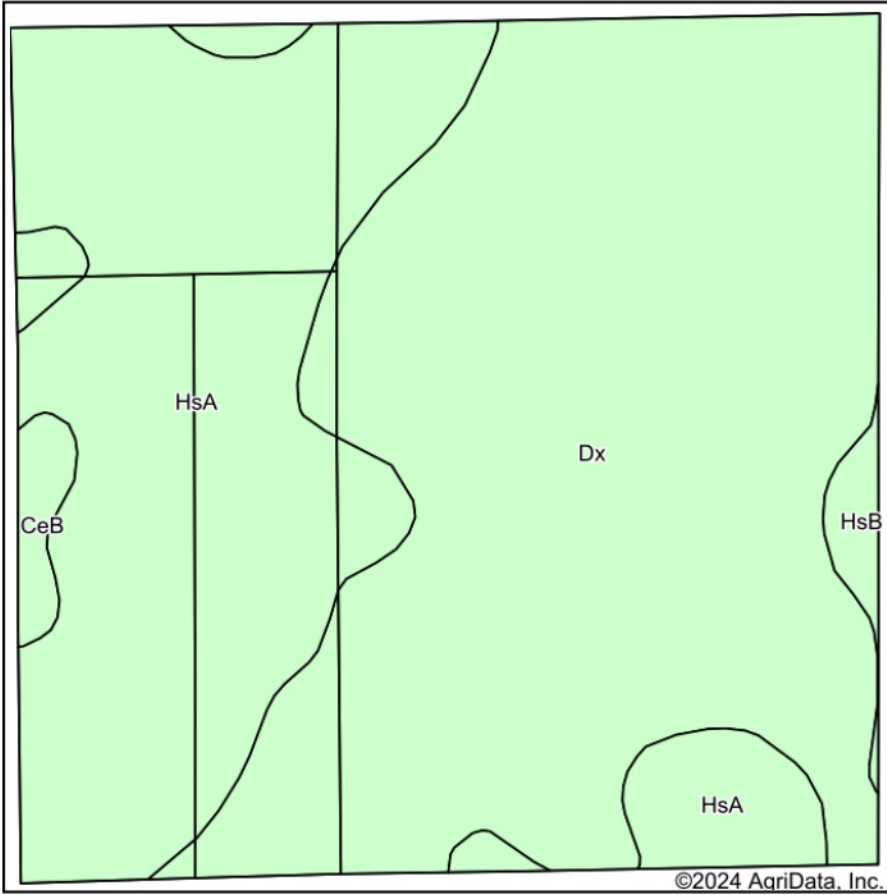
Area Symbol: SD077, Soil Area Version: 27

Code	Soil Description	Acres	Percent of field	Soil Drainage	Non-Irr Class *c	Range Production (lbs/acre/yr)	Productivity Index
HsA	Houdek-Stickney complex, 0 to 2 percent slopes	74.54	47.1%	Well drained	IIc	3141	77
CeB	Clarno-Ethan-Bonilla loams, 1 to 6 percent slopes	57.47	36.3%	Well drained	IIe	3219	78
Dx	Dudley-Jerauld silt loams, 0 to 2 percent slopes	21.64	13.7%	Moderately well drained	IVs	2136	28
CeC	Clarno-Ethan-Bonilla loams, 2 to 9 percent slopes	4.55	2.9%	Well drained	IIIe	3179	69
Weighted Average					2.30	3033	70.4

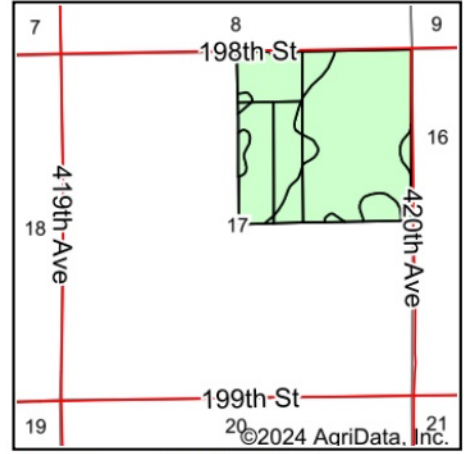
*c: Using Capabilities Class Dominant Condition Aggregation Method

Soils data provided by USDA and NRCS.

Soils Map



Soils data provided by USDA and NRCS.



State: **South Dakota**
 County: **Kingsbury**
 Location: **17-112N-58W**
 Township: **Le Sueur**
 Acres: **157.39**
 Date: **8/6/2024**

**BURLAGE
 PETERSON**
 Auctioneers & Realtors, LLC

Maps Provided By:

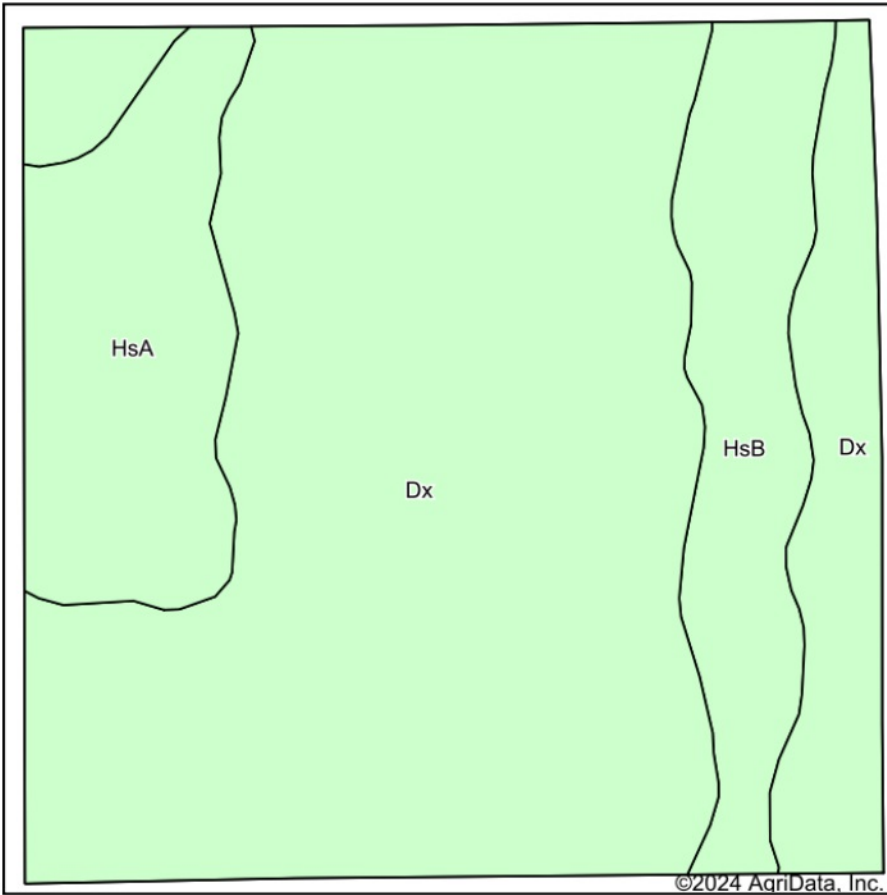


Area Symbol: SD077, Soil Area Version: 27

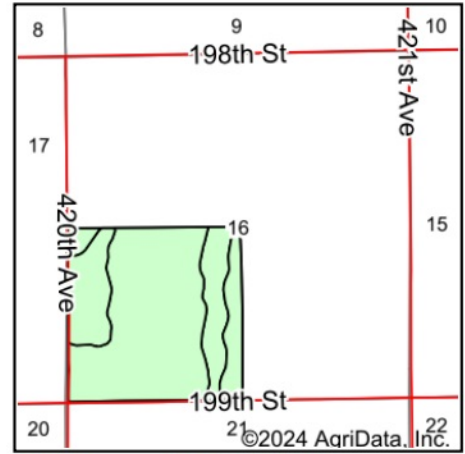
Code	Soil Description	Acres	Percent of field	Soil Drainage	Non-Irr Class *c	Range Production (lbs/acre/yr)	Productivity Index
Dx	Dudley-Jerauld silt loams, 0 to 2 percent slopes	90.90	57.8%	Moderately well drained	IVs	2136	28
HsA	Houdek-Stickney complex, 0 to 2 percent slopes	60.83	38.6%	Well drained	IIc	3141	77
CeB	Clarno-Ethan-Bonilla loams, 1 to 6 percent slopes	3.87	2.5%	Well drained	IIe	3219	78
HsB	Houdek-Stickney complex, 2 to 6 percent slopes	1.79	1.1%	Well drained	IIe	3117	74
Weighted Average					3.16	2562.2	48.7

*c: Using Capabilities Class Dominant Condition Aggregation Method

Soils Map



Soils data provided by USDA and NRCS.



State: **South Dakota**
 County: **Kingsbury**
 Location: **16-112N-58W**
 Township: **Le Sueur**
 Acres: **160.12**
 Date: **8/6/2024**

**BURLAGE
 PETERSON**
 Auctioneers & Realtors, LLC

Maps Provided By:



Area Symbol: SD077, Soil Area Version: 27

Code	Soil Description	Acres	Percent of field	Soil Drainage	Non-Irr Class *c	Range Production (lbs/acre/yr)	Productivity Index
Dx	Dudley-Jerauld silt loams, 0 to 2 percent slopes	117.74	73.5%	Moderately well drained	IVs	2136	28
HsA	Houdek-Stickney complex, 0 to 2 percent slopes	22.39	14.0%	Well drained	IIc	3141	77
HsB	Houdek-Stickney complex, 2 to 6 percent slopes	19.99	12.5%	Well drained	IIe	3117	74
Weighted Average					3.47	2399	40.6

*c: Using Capabilities Class Dominant Condition Aggregation Method