

- Common Land Unit**
- CRP
  - Non-Cropland
  - Cropland
  - Tract Boundary
  - PLSS

- Wetland Determination Identifiers**
- Restricted Use
  - Limited Restrictions
  - Exempt from Conservation Compliance Provisions

Unless otherwise noted, crops listed below are:  
 Non-irrigated  
 Intended for Grain  
 Corn = Yellow  
 Soybeans = Common  
 Wheat - HRS or HRW  
 Sunflowers = Oil or Non

Producer initial \_\_\_\_\_  
 Date \_\_\_\_\_

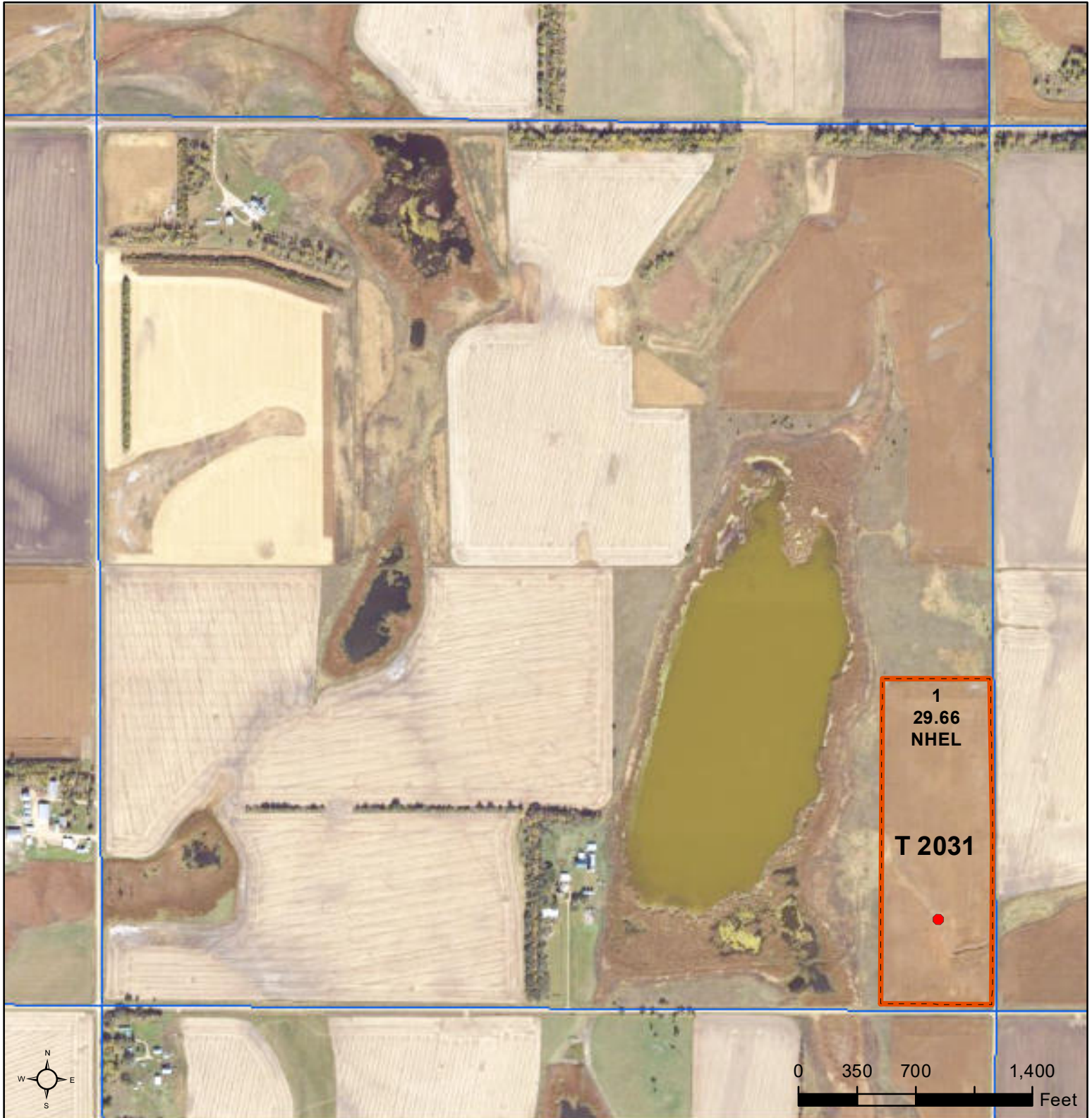
**2024 Program Year**  
 Map Created April 24, 2024

**Farm 3245**  
**Tract 1980**

**Tract Cropland Total: 124.49 acres**

**25-109N-54W-Kingsbury**

United States Department of Agriculture (USDA) Farm Service Agency (FSA) maps are for FSA Program administration only. This map does not represent a legal survey or reflect actual ownership; rather it depicts the information provided directly from the producer and/or National Agricultural Imagery Program (NAIP) imagery. The producer accepts the data 'as is' and assumes all risks associated with its use. USDA-FSA assumes no responsibility for actual or consequential damage incurred as a result of any user's reliance on this data outside FSA Programs. Wetland identifiers do not represent the size, shape, or specific determination of the area. Refer to your original determination (CPA-026 and attached maps) for exact boundaries and determinations or contact USDA Natural Resources Conservation Service (NRCS).



**Common Land Unit** PLSS

- Cropland
- Tract Boundary

**Wetland Determination Identifiers**

- Restricted Use
- ▼ Limited Restrictions
- Exempt from Conservation Compliance Provisions

Unless otherwise noted, crops listed below are:  
 Non-irrigated  
 Intended for Grain      Producer initial \_\_\_\_\_  
 Corn = Yellow              Date \_\_\_\_\_  
 Soybeans = Common  
 Wheat - HRS or HRW  
 Sunflowers = Oil or Non

**2024 Program Year**

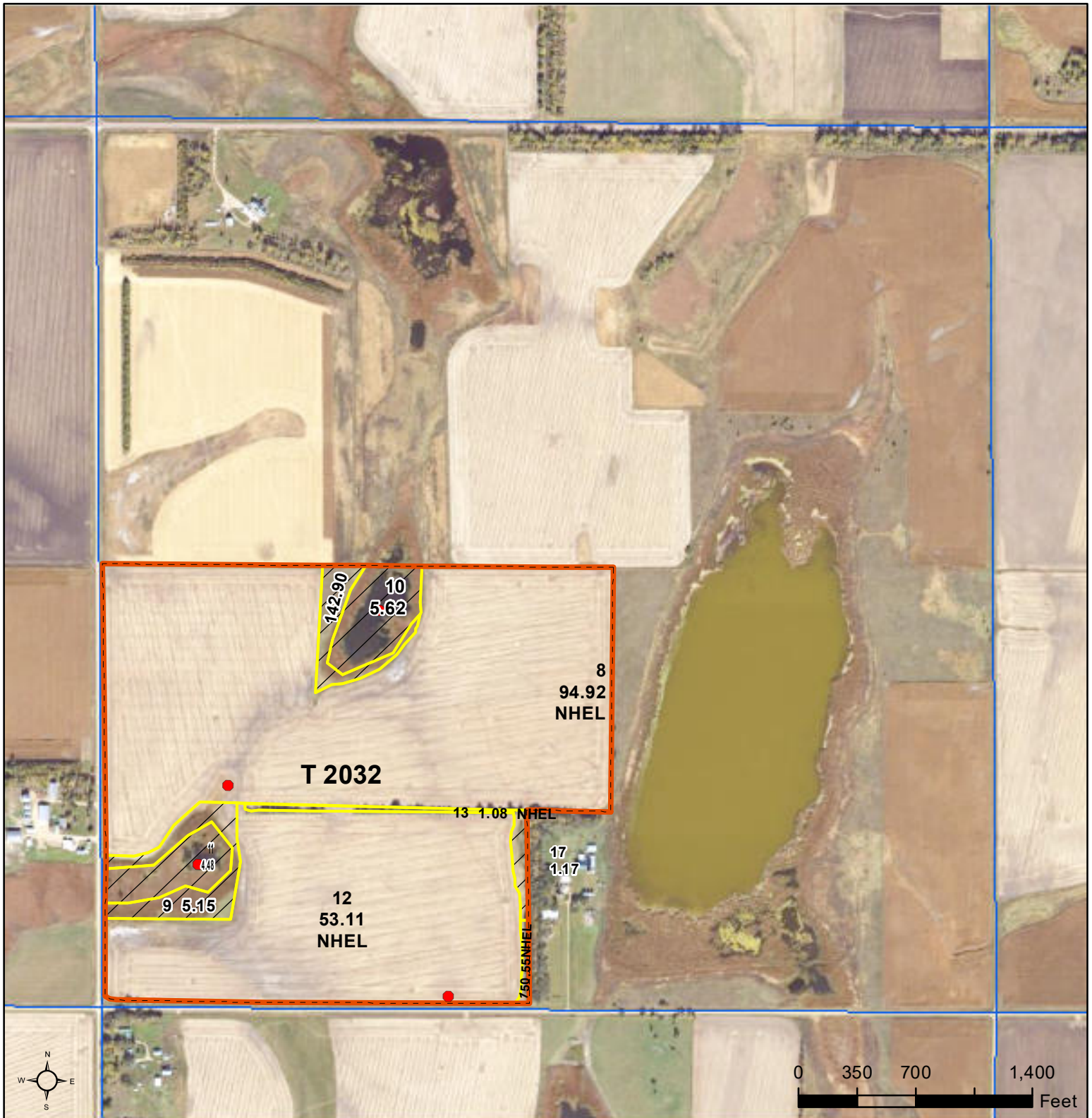
Map Created April 24, 2024

**Farm 3245**  
**Tract 2031**

**Tract Cropland Total: 29.66 acres**

**29-109N-53W-Kingsbury**

United States Department of Agriculture (USDA) Farm Service Agency (FSA) maps are for FSA Program administration only. This map does not represent a legal survey or reflect actual ownership; rather it depicts the information provided directly from the producer and/or National Agricultural Imagery Program (NAIP) imagery. The producer accepts the data 'as is' and assumes all risks associated with its use. USDA-FSA assumes no responsibility for actual or consequential damage incurred as a result of any user's reliance on this data outside FSA Programs. Wetland identifiers do not represent the size, shape, or specific determination of the area. Refer to your original determination (CPA-026 and attached maps) for exact boundaries and determinations or contact USDA Natural Resources Conservation Service (NRCS).



**Common Land Unit**  
  Tract Boundary  
  PLSS  
  Non-Cropland  
  Cropland

**Wetland Determination Identifiers**  
● Restricted Use  
▼ Limited Restrictions  
■ Exempt from Conservation Compliance Provisions

Unless otherwise noted, crops listed below are:  
 Non-irrigated  
 Intended for Grain  
 Corn = Yellow  
 Soybeans = Common  
 Wheat - HRS or HRW  
 Sunflowers = Oil or Non

Producer initial \_\_\_\_\_  
 Date \_\_\_\_\_

2024 Program Year  
 Map Created April 24, 2024

**Farm 3245**  
**Tract 2032**

Tract Cropland Total: 149.66 acres

**29-109N-53W-Kingsbury**

United States Department of Agriculture (USDA) Farm Service Agency (FSA) maps are for FSA Program administration only. This map does not represent a legal survey or reflect actual ownership; rather it depicts the information provided directly from the producer and/or National Agricultural Imagery Program (NAIP) imagery. The producer accepts the data 'as is' and assumes all risks associated with its use. USDA-FSA assumes no responsibility for actual or consequential damage incurred as a result of any user's reliance on this data outside FSA Programs. Wetland identifiers do not represent the size, shape, or specific determination of the area. Refer to your original determination (CPA-026 and attached maps) for exact boundaries and determinations or contact USDA Natural Resources Conservation Service (NRCS).