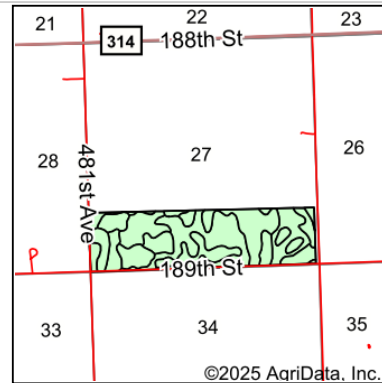
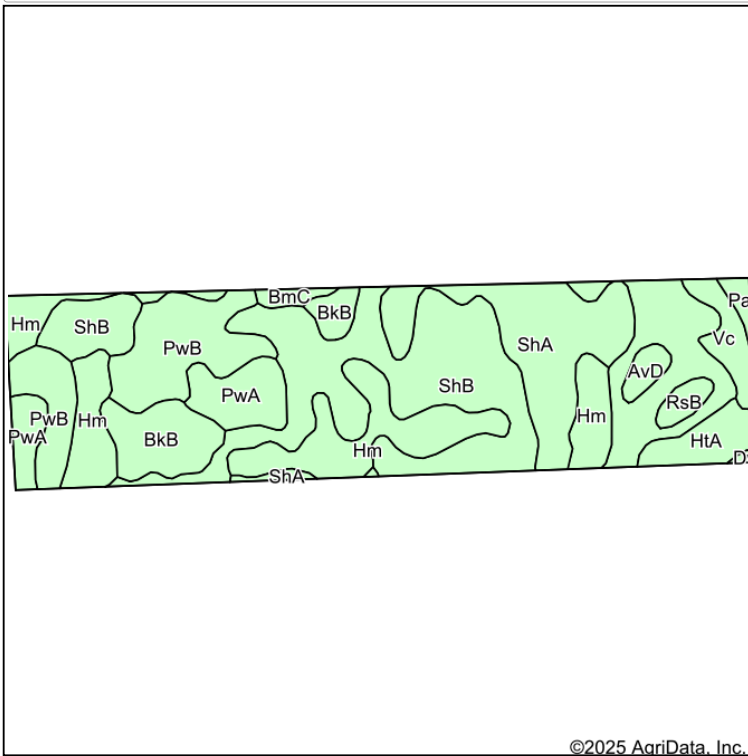


Soils Map



State: **South Dakota**
 County: **Deuel**
 Location: **27-114N-48W**
 Township: **Norden**
 Acres: **160**
 Date: **1/7/2025**

**BURLAGE
 PETERSON**

Auctioneers & Realtors, LLC

Maps Provided By:



Soils data provided by USDA and NRCS.

Area Symbol: SD039, Soil Area Version: 28						
Code	Soil Description	Acres	Percent of field	Non-Irr Class	Productivity Index	*n NCCPI Overall
ShB	Singsaas-Waubay silty clay loams, 1 to 6 percent slopes	57.23	35.7%	Ile	87	59
Hm	Hamerly-Badger complex, 0 to 2 percent slopes	27.13	17.0%	Ils	78	62
ShA	Singsaas-Waubay silty clay loams, 0 to 2 percent slopes	20.66	12.9%	Is	92	59
PwB	Poinsett-Waubay silty clay loams, 1 to 6 percent slopes	19.62	12.3%	Ile	89	73
BkB	Barnes-Svea loams, 1 to 6 percent slopes	10.32	6.4%	Ile	83	72
PwA	Poinsett-Waubay silty clay loams, 0 to 2 percent slopes	9.45	5.9%	Is	93	75
HtA	Hegne-Fulda silty clay loams	5.03	3.1%	Ilw	80	49
Vc	Vallers loam	4.19	2.6%	IVw	49	56
AvD	Arvilla-Sioux complex, 6 to 15 percent slopes	1.85	1.2%	Vle	10	35
RsB	Renshaw-Sioux complex, coteau, 2 to 6 percent slopes	1.85	1.2%	Vs	34	38
BmC	Barnes-Svea-Buse loams, 2 to 9 percent slopes	1.26	0.8%	Ille	64	65
Pa	Parnell silty clay loam	1.14	0.7%	Vw	30	33
Dv	Divide loam	0.27	0.2%	Ills	55	45
Weighted Average				1.98	83.1	*n 61.9

*n: The aggregation method is "Weighted Average using all components"

Soils data provided by USDA and NRCS.