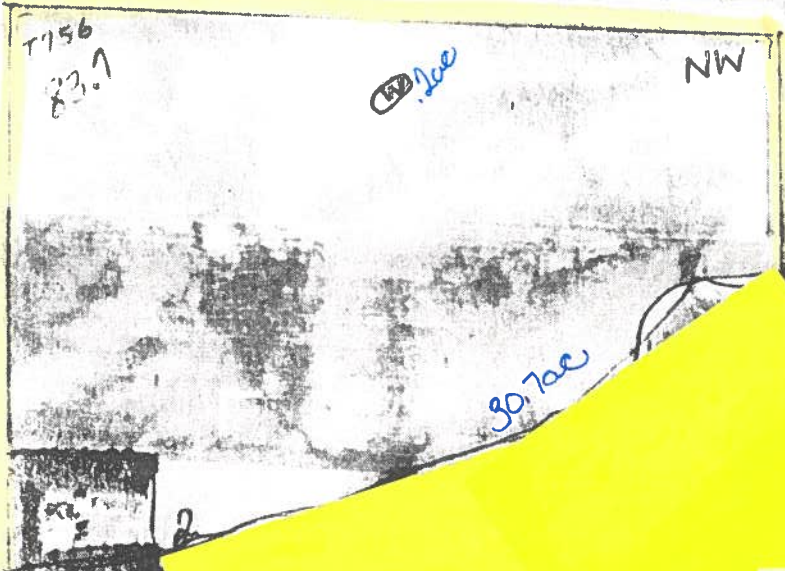




NOT T

- (W) Wetland
- (FW) Ditched or tiled prior to 12-23-85 but still wetland
- (PC) Converted Wetland prior to 12-23-85
- (CW) Converted Wetland after 12-23-85



OFFICIAL WETLAND DETERMINATION

U.S.D.A.  
Soil Conservation Service

SCS-CP 26  
(June 91)

1. Name and Address of Person  
*Richard Beare  
Route 1 Box 117  
Estelline, SD 57234*

2. Date of Request

3. County  
*Hamlin*

**HIGHLY ERODIBLE LAND AND WETLAND  
CONSERVATION DETERMINATION**

4. Name of USDA Agency or Person Requesting Determination

*ASCS*

5. Farm No. and Tract No.

*#388 T-See CPA-026A*

**SECTION I - HIGHLY ERODIBLE LAND**

6. Is soil susceptible to highly erodible land determination? Yes  No

7. Are there any records, were used to produce an agricultural commodity in any

8. List high crop year records, were used to produce an agricultural commodity in any

9. List high records, were used to produce an agricultural commodity in any

10. This Highly Erodible Land determination was completed in the: Office  Field

FIELD NO.(s) TOTAL ACRES

FIELD NO.(s) TOTAL ACRES

FIELD NO.(s) TOTAL ACRES

FIELD NO.(s) TOTAL ACRES

FIELD NO.(s) TOTAL ACRES

FIELD NO.(s) TOTAL ACRES

FIELD NO.(s) TOTAL ACRES

FIELD NO.(s) TOTAL ACRES

**SECTION II - WETLAND**

11. Are there hydric soils on this farm? Yes  No

12. Wetlands (W), including abandoned wetlands, or Farmed Wetlands (FW) or Farmed Wetlands Pasture (FWP). Wetlands may be farmed under natural conditions. Farmed Wetlands and Farmed Wetlands Pasture may be farmed and maintained in the same manner as they were prior to December 23, 1985, as long as they are not abandoned.

13. Prior Converted Cropland (PC). Wetlands that were converted prior to December 23, 1985. The use, management, drainage, and alteration of prior converted cropland (PC) are not subject to the wetland conservation provisions unless the area reverts to wetland as a result of abandonment.

14. Artificial Wetlands (AW). Artificial wetlands includes irrigation-induced wetlands. These wetlands are not subject to the wetland conservation provisions.

15. Minimal Effect Wetlands (MW). These wetlands are to be farmed according to the minimal-effect agreement signed at the time the minimal-effect determination was made.

16. Mitigation Wetlands (MIW). Wetlands on which a person is actively mitigating a frequently cropped area or a wetland converted between December 23, 1985 and November 28, 1990.

17. Restoration with Violation (RVW+year). A restored wetland that was in violation as a result of conversion after November 28, 1990, or the planting of an agricultural commodity or forage crop.

18. Restoration without Violation (RSW). A restored wetland converted between December 23, 1985 and November 28, 1990, on which an agricultural commodity has not been planted.

19. Replacement Wetlands (RPW). Wetlands which are converted for purposes other than to increase production, where the wetland values are being replaced at a second site.

20. Good Faith Wetlands (GFW+year). Wetlands on which ASCS has determined a violation to be in good faith and the wetland has been restored.

21. Converted Wetlands (CW). Wetlands converted after December 23, 1985 and prior to November 28, 1990. In any year that an agricultural commodity is planted on these Converted Wetlands, you will be ineligible for USDA benefits.

22. Converted Wetland (CW+year). Wetlands converted after November 28, 1990. You will be ineligible for USDA program benefits until this wetland is restored.

23. Converted Wetland Non-Agricultural use (CWNA). Wetlands that are converted for trees, fish production, shrubs, cranberries, vineyards or building and road construction.

24. Converted Wetland Technical Error (CWTE). Wetlands that were converted as a result of incorrect determination by SCS.

25. The planned alteration measures on wetlands in fields \_\_\_\_\_ are considered maintenance and are in compliance with FSA.

26. The planned alteration measures on wetlands in fields \_\_\_\_\_ are not considered to be maintenance and if installed will cause the area to become a Converted Wetland (CW). See item 22 for information on CW+year.

27. The wetland determination was completed in the office  field  and was delivered  mailed  to the person on *3-18-92*

28. Remarks  
Wetlands may be cropped when natural conditions permit; however, they cannot be drained or altered to destroy their wetland character for purposes of commodity production. This determination is for USDA benefits only.

29. I certify that the above determination is correct and adequate for use in determining eligibility for USDA program benefits, and that wetland hydrology, hydric soils, and hydrophytic vegetation under normal circumstances exist on all areas outlined as Wetlands, Farmed Wetlands, and Farmed Wetlands Pasture.

30. Signature of SCS District Conservationist  
*Roger Mueller*

31. Date  
*3-18-92*

OFFICIAL WETLAND DETERMINATION  
for Highlighted Tracts Only

T 756 WD considered  
Certified  
(NFSAM 514.1, 2017)  
6.06/14/8

Estimate

See  
CPA-026A

81.8