

5-8-2023

Dear Landowner,

Thank you for your continued support of the Deuel South Wind Project as well as your involvement in the project to date. We are happy to announce that we have been hard at work engineering a project layout these last few months, built off the land of our project participating landowners, and we are excited to announce that we have a preliminary project layout to unveil.

The preliminary project layout represents a rough draft of our project layout. In other words, our thoughts for how we envision the project looking based off our current finding from our engineering, environmental, and due-diligence studies. We will continue to perform studies this spring and summer and refine our layout. However, we want to keep you in the loop throughout the process and show you what we are currently envisioning.

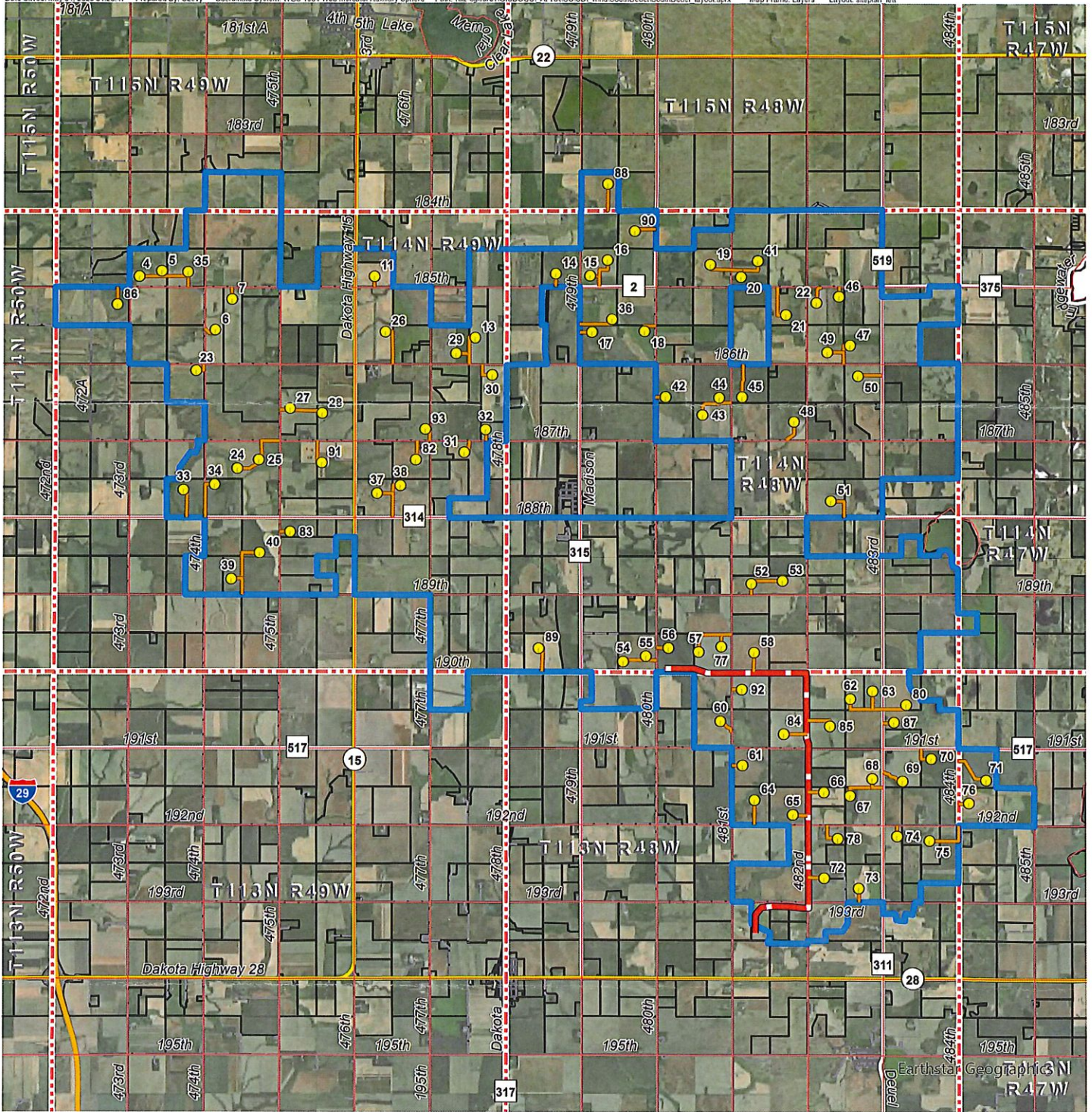
Within this envelope you will either find one or multiple maps. The first map will be a full project preliminary layout overview map, that will display the full project boundary and all our proposed facilities. If you have additional maps, you will notice they display a zoomed-in image of the facilities on your property specifically. If you have facilities proposed on your property, please feel free to mark up your maps with any notes or comments you have pertaining to what we are proposing. Please keep in mind that these facilities are meticulously sited and difficult to move, particularly turbine locations. However, access roads we have some more flexibility when siting and would appreciate your input. When done providing your comments please either take a photo or scan and send to my email at ryoung@invenergy.com or send via mail to the address below in my signature. I am also happy to discuss over the phone but having your handwritten comments on the map will make it easiest for me to relay to our engineering team in Chicago. If you are okay with the location of the planned facilities, an email saying so would be much appreciated. If I do not hear word from you by **June 2nd**, 2023, I will assume you are okay with the location of the planned facilities on your property. If you do not have facilities proposed on your property, no need to submit comments.

If you have any questions about the project, please feel free to reach out. You can find my contact information in my signature below. Thank you for your continued support and participation on this journey!

Best regards,



Robert Young | Senior Analyst, Renewable Development
Invenergy | One South Wacker Drive, Suite 1800, Chicago, IL 60606
Email: ryoung@invenergy.com | Phone: (312) 638-8499

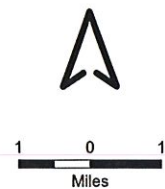


Legend

Project Layout

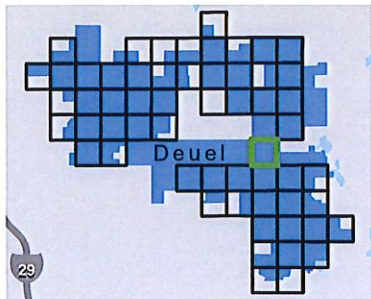
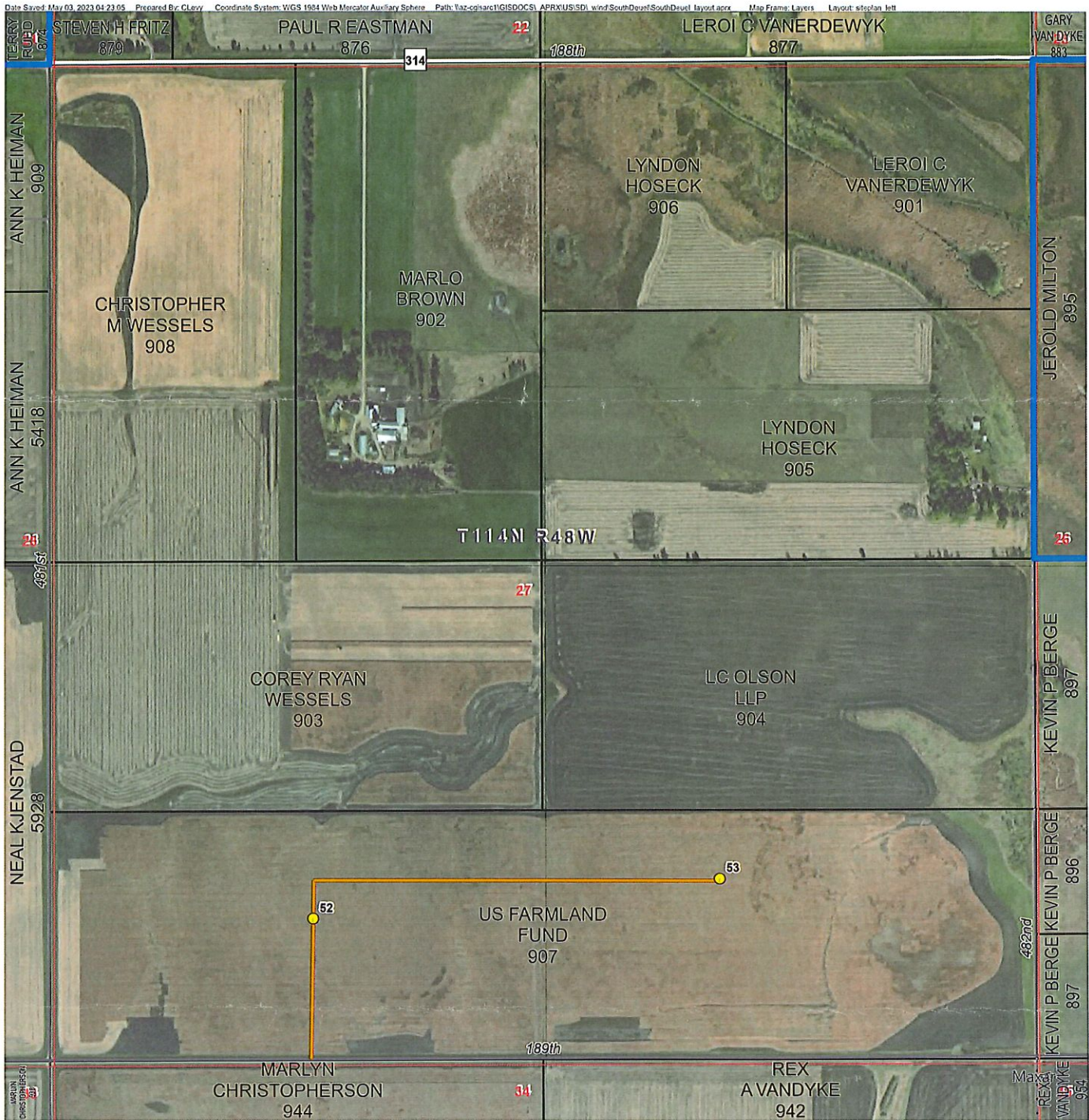
- Turbine Location
- Access Road
- Project Transmission Line
- Project Boundary
- - - Township/Range Boundary
- Section Line

- Parcel Boundary
- Road Classification**
- Interstate Highway
- US/State Route
- County Road
- Local Road
- Dirt/Unpaved Road



This map reflects a preliminary layout. Location of facilities are not final and can change.

Site Plan

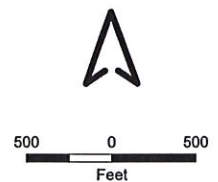


Legend

Project Layout

- Turbine Location
- Access Road
- Project Boundary
- Township/Range Boundary
- Section Line

- Parcel Boundary
- County Road
- Local Road
- Dirt/Unpaved Road



This map reflects a preliminary layout. Location of facilities are not final and can change.

Site Plan Township 114N, Range 48W, Section 27