

Brookings County, SD

Soils

Symbol	Acres	\$/Acre	Adjust	Class Description	Slope	Subclass	Rating	CR/GR	Map Symbol
108	28.3	\$30,166.59	0	LAMOURERAUVILLE SICL, CH	0-1		0.492	G	LM
113	46.87	\$65,599.75	0	LOWELUDDEN COMPLEX, UNDR	0-1		0.646	G	LR
119	0.04	\$81.98	0	MADDOCKEGELAND SANDY LOA	2-6		0.566	C	MAB
177	1.13	\$2,434.73	0	STRAYHOSSMADDOCK COMPLEX	2-6		0.595	C	STB
Total	76.34	\$104,300.00					Weighted Avg Rating	0.588	

Soils

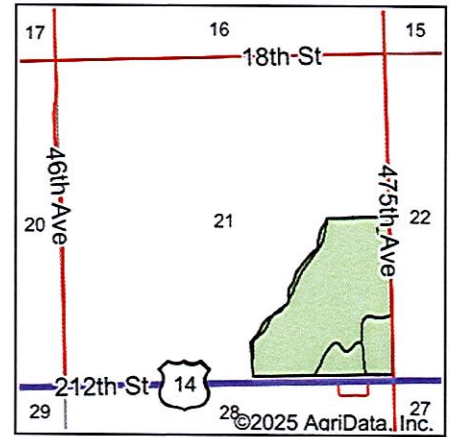
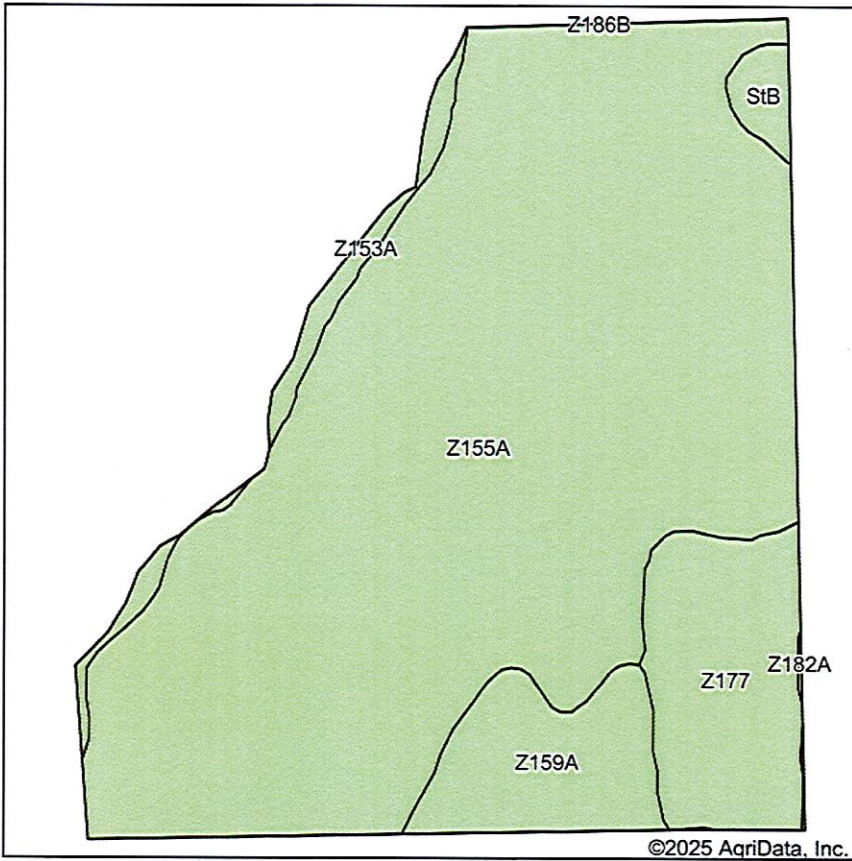
Symbol	Acres	\$/Acre	Adjust	Class Description	Slope	Subclass	Rating	CR/GR	Map Symbol
050	7.18	\$16,328.27	0	DIVIDE LOAM UNDR	0-2		0.628	C	DN
066	0.2	\$514.94	0	ESTELLINE SILT LOAM	0-2		0.711	C	ESA
108	15.7	\$16,735.53	0	LAMOURERAUVILLE SICL, CH	0-1		0.492	G	LM
114	42.92	\$60,071.29	0	LOWELUDDEN COMPLEX, UNDR	0-1		0.646	G	LR
138	10.34	\$3,046.73	0	ORTHENTS VERY GRAVELLY LO	0-60		0.136	G	OG
Total	76.34	\$103,400.00					Weighted Avg Rating	0.544	

Brookings County digital cadastral data are a representation of recorded plats and surveys for use within the Geographic Information System for purposes of data access and analysis. These and other digital data do not replace or modify land surveys, deeds, and/or other legal instruments defining land ownership or use.
[User Privacy Policy](#) | [GDPR Privacy Notice](#)
 Last Data Upload: 2/11/2025, 12:02:27 AM

Contact Us

Developed by
 **SCHNEIDER**
 GEOSPATIAL

Soils Map



State: **South Dakota**
 County: **Brookings**
 Location: **21-110N-49W**
 Township: **Aurora**
 Acres: **101.15**
 Date: **2/11/2025**

**BURLAGE
 PETERSON**
 Auctioneers & Realtors, LLC

Maps Provided By:

 CUSTOMIZED ONLINE MAPPING
 © AgriData, Inc. 2023 www.AgriDataInc.com



Soils data provided by USDA and NRCS.

Area Symbol: SD011, Soil Area Version: 32

Code	Soil Description	Acres	Percent of field	Non-Irr Class	Productivity Index	*n NCCPI Overall
Z155A	Lowe, occasionally flooded-Ludden, frequently flooded, complex, 0 to 1 percent slopes	79.75	78.8%	IVw	47	41
Z177	Udorthents, coteau (gravel pits)	10.20	10.1%	VIIIIs	2	7
Z159A	Divide loam, 0 to 2 percent slopes, occasionally flooded	7.34	7.3%	IIIIs	54	39
Z153A	Lamoure-Rauville silty clay loams, channeled, 0 to 2 percent slopes, frequently flooded	2.54	2.5%	VIw	13	24
StB	Strayhoss-Maddock complex, 2 to 6 percent slopes	1.23	1.2%	IIe	60	54
Z182A	Estelline silt loam, coteau, 0 to 2 percent slopes	0.09	0.1%	IIIs	66	60
Weighted Average				4.35	42.3	*n 37.2

*n: The aggregation method is "Weighted Average using all components"