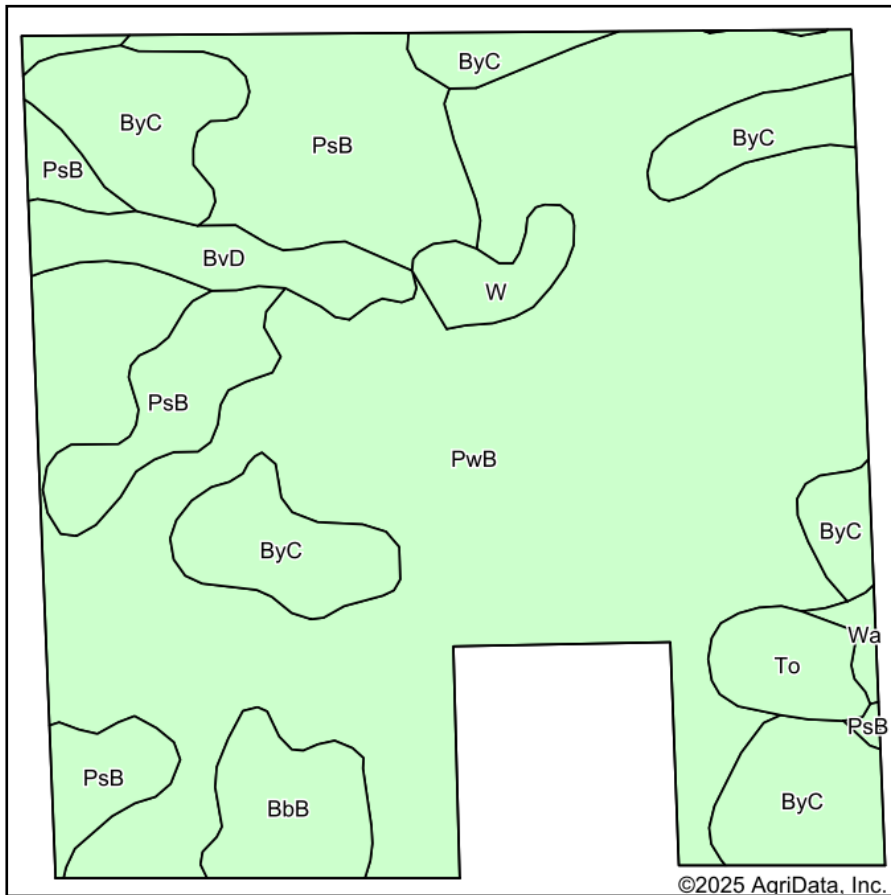
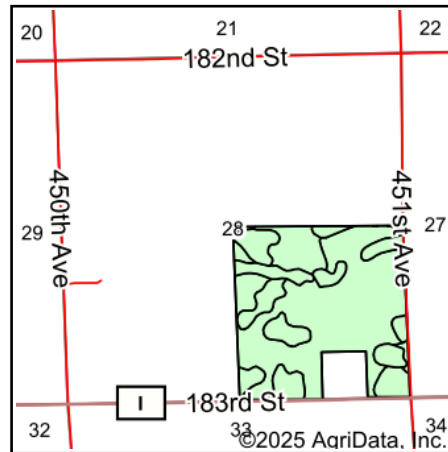


# Soils Map



Soils data provided by USDA and NRCS.



State: **South Dakota**  
 County: **Hamlin**  
 Location: **28-115N-53W**  
 Township: **Oxford**  
 Acres: **150.57**  
 Date: **2/6/2025**

**BURLAGE  
 PETERSON**  
 Auctioneers & Realtors, LLC

Maps Provided By:  
  
 CUSTOMIZED ONLINE MAPPING  
 © AgriData, Inc. 2023 www.AgriDataInc.com



Area Symbol: SD057, Soil Area Version: 26

Code	Soil Description	Acres	Percent of field	Non-Irr Class	Productivity Index	*n NCCPI Overall
PwB	Poinsett-Waubay silty clay loams, 1 to 6 percent slopes	89.94	59.7%	Ile	89	72
ByC	Buse-Poinsett complex, 6 to 9 percent slopes	22.25	14.8%	IVe	66	53
PsB	Poinsett-Buse-Waubay complex, 1 to 6 percent slopes	21.40	14.2%	Ile	81	68
BvD	Buse-Lamoure, channeled, complex, 0 to 40 percent slopes	5.38	3.6%	VIIe	20	15
BbB	Barnes-Buse loams, coteau, 2 to 6 percent slopes	5.04	3.3%	Ile	75	64
To	Tonka silty clay loam, 0 to 1 percent slopes	3.29	2.2%	IVw	58	29
W	Water	2.56	1.7%	VIII	0	
Wa	Waubay silty clay loam, 0 to 2 percent slopes	0.71	0.5%	Iw	98	80
<b>Weighted Average</b>				<b>2.62</b>	<b>79.4</b>	<b>*n 64.2</b>

\*n: The aggregation method is "Weighted Average using all components"

Soils data provided by USDA and NRCS.