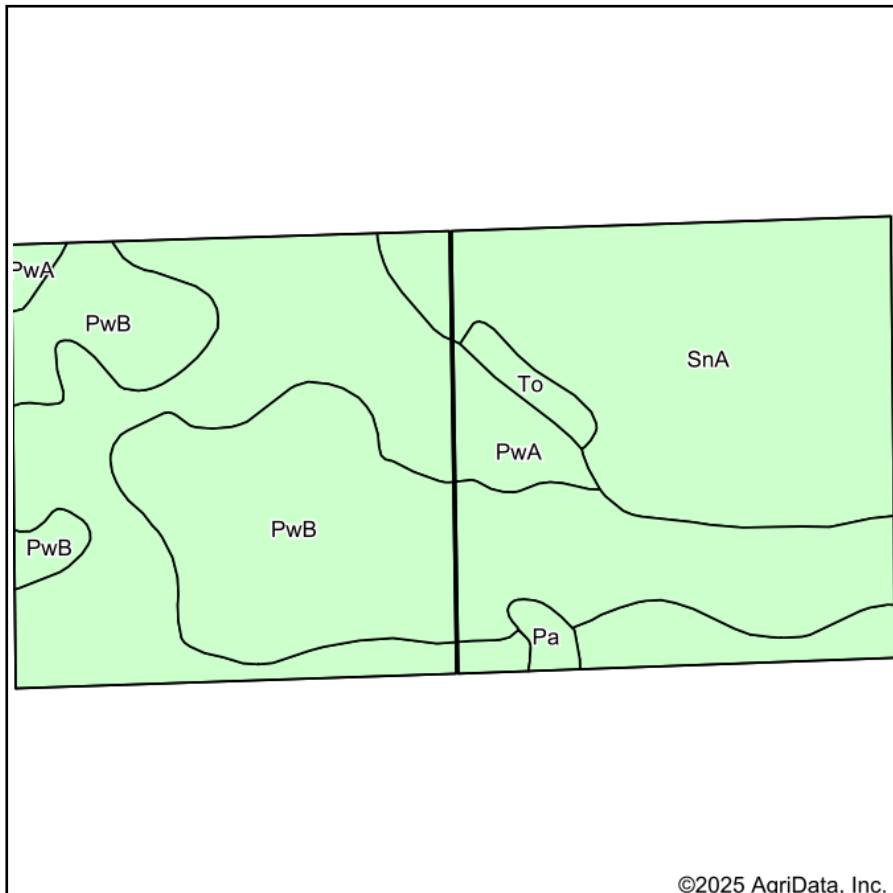
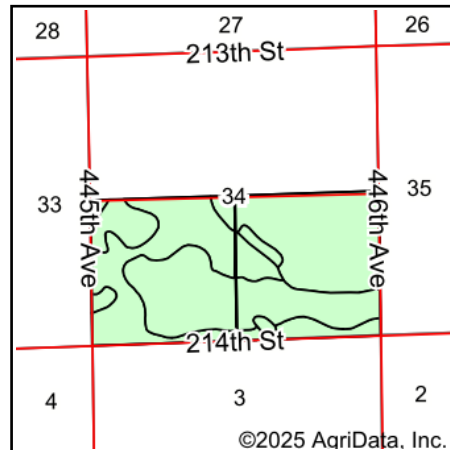


Soils Map



Soils data provided by USDA and NRCS.

©2025 AgriData, Inc.



©2025 AgriData, Inc.

State: **South Dakota**
 County: **Kingsbury**
 Location: **34-110N-54W**
 Township: **Spring Lake**
 Acres: **319.96**
 Date: **2/25/2025**

**BURLAGE
 PETERSON**

Auctioneers & Realtors, LLC

Maps Provided By:



© AgriData, Inc. 2023

www.AgriDataInc.com



Area Symbol: SD077, Soil Area Version: 28

Code	Soil Description	Acres	Percent of field	Non-Irr Class	Productivity Index	*n NCCPI Overall
PwB	Poinsett-Waubay silty clay loams, 1 to 6 percent slopes	116.71	36.5%	Ile	89	72
PwA	Poinsett-Waubay silty clay loams, 0 to 2 percent slopes	102.73	32.1%	Is	93	73
SnA	Sinai silty clay, 0 to 2 percent slopes	93.49	29.2%	IIs	81	50
To	Tonka silty clay loam, 0 to 1 percent slopes	4.25	1.3%	IVw	58	29
Pa	Parnell silty clay loam	2.78	0.9%	Vw	34	14
Weighted Average				1.73	87.1	*n 64.8

*n: The aggregation method is "Weighted Average using all components"