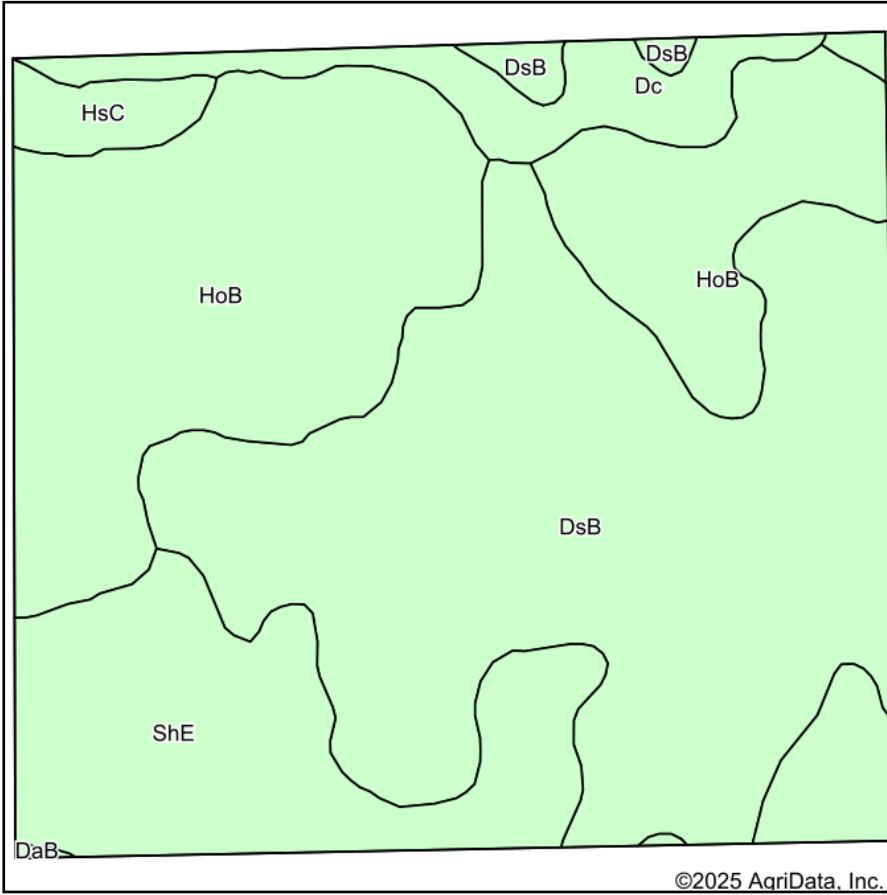
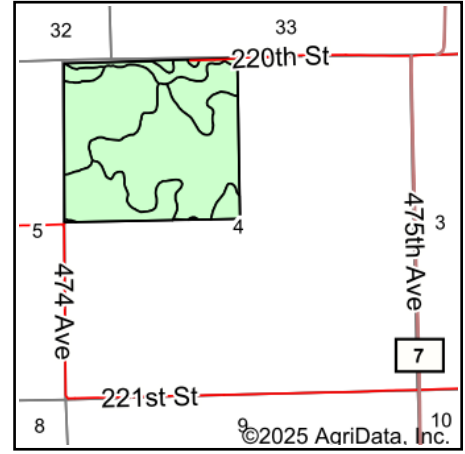


Soils Map



Soils data provided by USDA and NRCS.



State: **South Dakota**
 County: **Moody**
 Location: **4-108N-49W**
 Township: **Riverview**
 Acres: **145**
 Date: **3/31/2025**

**BURLAGE
 PETERSON**

Auctioneers & Realtors, LLC

Maps Provided By:



Area Symbol: SD101, Soil Area Version: 29

Code	Soil Description	Acres	Percent of field	Soil Drainage	Non-Irr Class *c	Range Production (lbs/acre/yr)	Productivity Index
DsB	Doland loam, 2 to 6 percent slopes	62.42	43.0%	Well drained	Ile	3609	82
HoB	Houdek clay loam, 2 to 6 percent slopes	46.46	32.0%	Well drained	Ile	3795	82
ShE	Shindler-Houdek clay loams, 15 to 40 percent slopes	25.89	17.9%	Well drained	VIIe	3725	21
Dc	Davison-Crossplain clay loams	7.36	5.1%	Moderately well drained	IIs	4633	80
HsC	Houdek-Shindler clay loams, 5 to 9 percent slopes	2.75	1.9%	Well drained	IIle	3757	63
DaB	Davis loam, 2 to 9 percent slopes	0.12	0.1%	Well drained	Ile	3682	85
Weighted Average					2.91	3744.2	70.6

*c: Using Capabilities Class Dominant Condition Aggregation Method

Soils data provided by USDA and NRCS.