

Tract 1

1

# Certified Wetland Determination

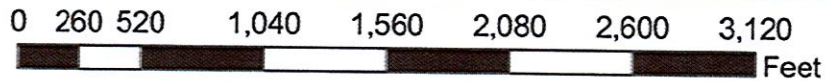
Field Office: Brookings FO  
Certified By: Ryan Forbes  
Legal Desc: NE 14, T 109N, R 48W

Agency: USDA-NRCS  
Certified Date: 9-22-2010  
Tract: [REDACTED]



**Legend**

- Certified Wetland Determination Boundary
- Wetlands
- Wetlands
- Ditch
- NI
- NI/Ditch
- Tie



- W Wetland
- FW Farmed Wetland Drained or modified & cropped prior to 12-23-1985, but still meets wetland criteria
- PC Prior Converted
- NW Non Wetland
- NI Not Inventoried Potential Waters of the US

See NRCS CPA-O26E for definitions and additional info.





Tract 1

# Certified Wetland Determination

01

Field Office: Brookings FO

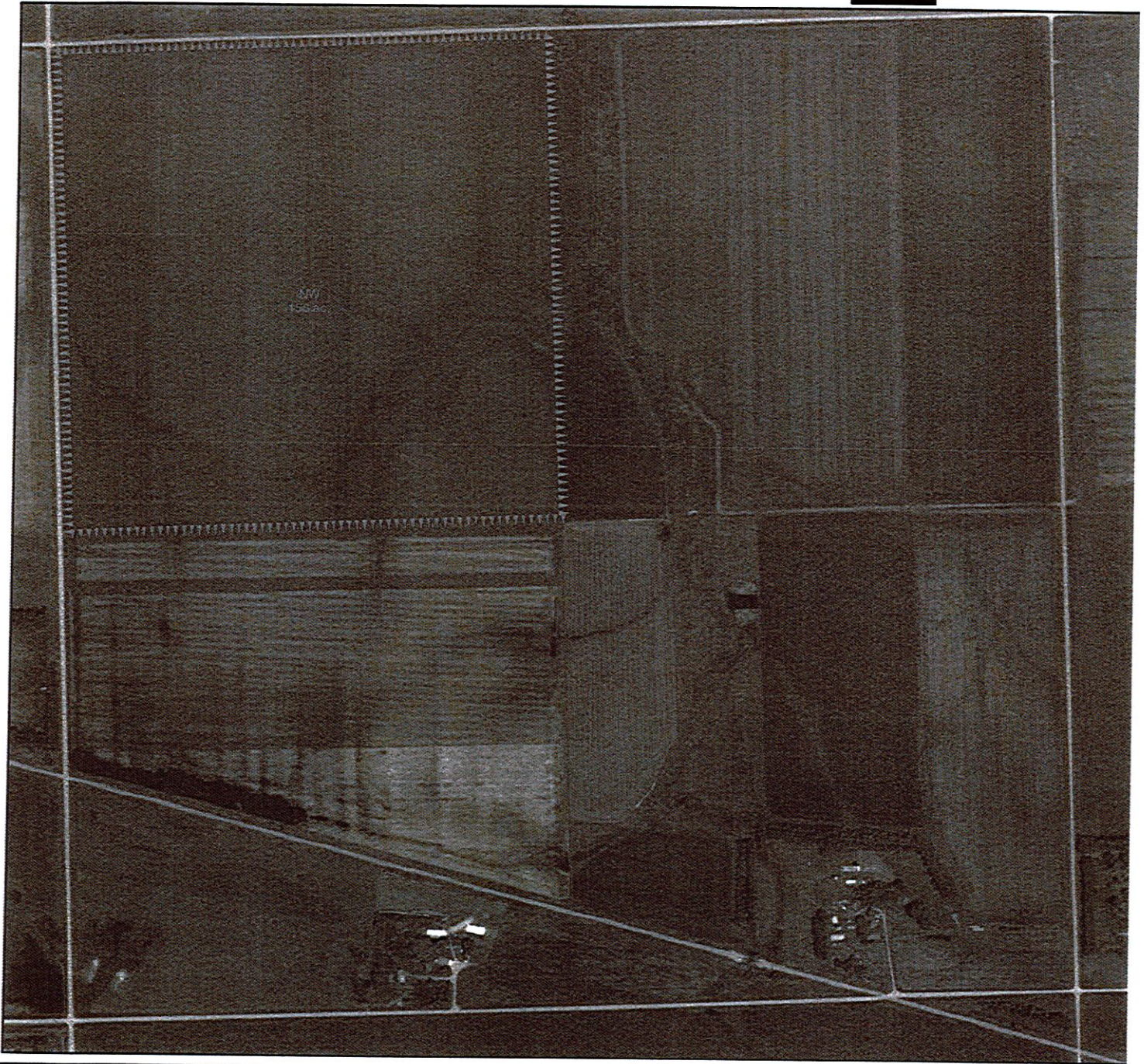
Agency: USDA-NRCS

Certified By: J. Todoroff

Certified Date: 8-11-2011

Legal Desc: Nw 1/4 Sec. 11, T 109N, R 48W

Tract: [REDACTED]



**Legend**

- Certified Wetland Determination Boundary
- Wetlands
- Wetlands
- Ditch
- NI
- NI/Ditch
- Tile



- W Wetland
- FW Farmed Wetland Drained or modified & cropped prior to 12-23-1985, but still meets wetland criteria
- PC Prior Converted
- NW Non Wetland
- NI Not Invented Potential Waters of the US

See NRCS CPA-O26E for definitions and additional info.





Tract 1

# Certified Wetland Determination

01

Field Office: Brookings FO

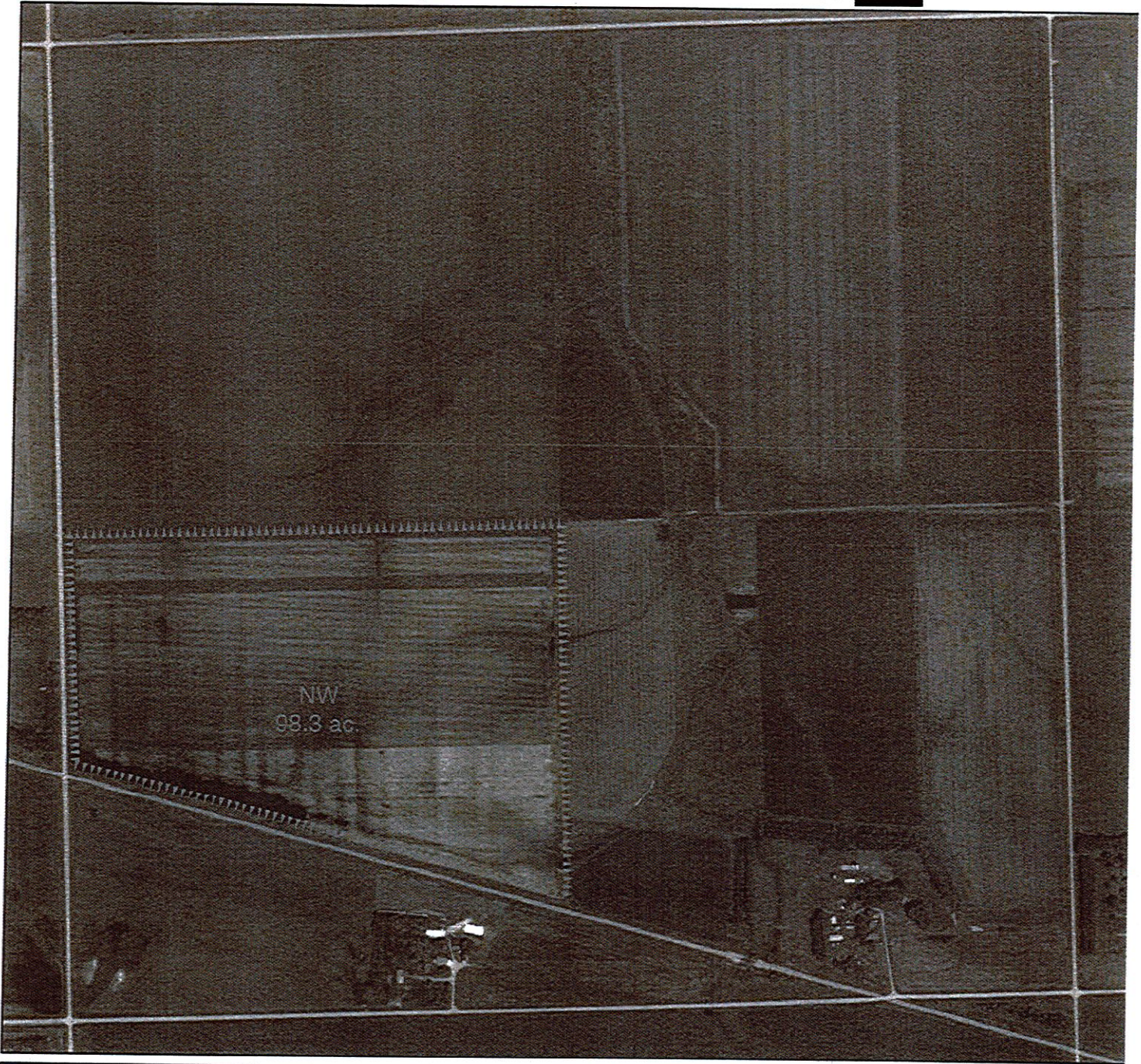
Agency: USDA-NRCS

Certified By: J. Todoroff

Certified Date: 8-11-2011

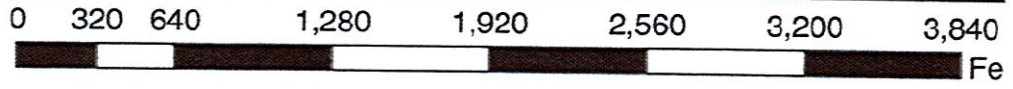
Legal Desc: SW 1/4 Sec. 11, T 109N, R 48W

Tract: XXXXXXXXXX



**Legend**

- Certified Wetland Determination Boundary
- Wetlands
- Wetlands
- Ditch
- NI
- NI/Ditch
- Tile



- W Wetland
- FW Farmed Wetland Drained or modified & cropped prior to 12-23-1985, but still meets wetland criteria
- PC Prior Converted
- NW Non Wetland
- NI Not Inventoried Potential Waters of the US

See NRCS CPA-O26E for definitions and additional info.





Tract 2

# Certified Wetland Determination



Field Office: Brookings FO

Agency: USDA-NRCS

Certified By: J. Todoroff

Certified Date: 5/29/12

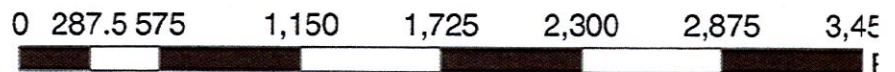
Legal Desc: S 18, T 109N, R 47W

Tract: [Redacted]



**Legend**

- Certified Wetland Determination Boundary
- Wetlands
- Wetlands
- Ditch
- NI
- NI/Ditch
- Tile



- W Wetland
- FW Farmed Wetland Drained or modified & cropped prior to 12-23-1985, but still meets wetland criteria
- PC Prior Converted
- NW Non Wetland
- NI Not Inventoried Potential Waters of the US

See NRCS CPA-O26E for definitions and additional info.





Tract 2

# Certified Wetland Determination



Field Office: Brookings FO

Agency: USDA-NRCS

Certified By: J. Todoroff

Certified Date: 5/29/12

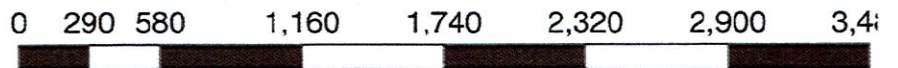
Legal Desc: S 18, T 109N, R 47W

Tract: [REDACTED]



**Legend**

- Certified Wetland Determination Boundary
- Wetlands
- Wetlands
- Ditch
- NI
- NI/Ditch
- Tile



- W Wetland
- FW Farmed Wetland Drained or modified & cropped prior to 12-23-1985, but still meets wetland criteria
- PC Prior Converted
- NW Non Wetland
- NI Not Inventoried Potential Waters of the US

See NRCS CPA-O26E for definitions and additional info.





Tract 2

# Certified Wetland Determination

2

Field Office: Brookings FO

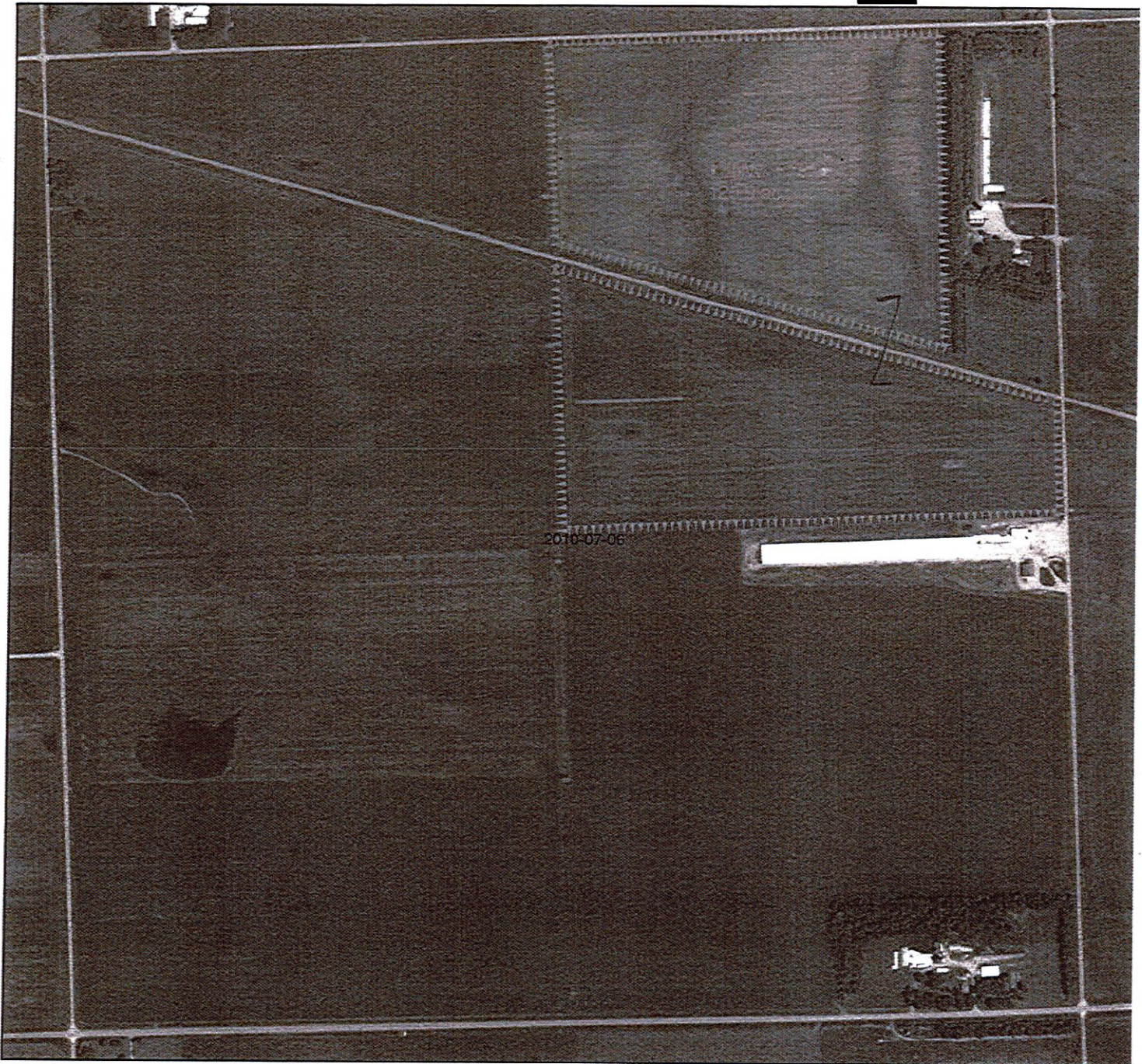
Agency: USDA-NRCS

Certified By: Ryan Forbes

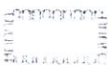






Certified Date: 9-6-11

Legal Desc: NE 1/4 Sec. 13, T 109N, R 48W

Tract: [REDACTED]



**Legend**

-  Certified Wetland Determination Boundary
-  Wetlands
-  Wetlands
-  Ditch
-  NI
-  NI/Ditch
-  Tile



- W Wetland
- FW Farmed Wetland Drained or modified & cropped prior to 12-23-1985, but still meets wetland criteria
- PC Prior Converted
- NW Non Wetland
- NI Not Inventoried Potential Waters of the US

See NRCS CPA-O26E for definitions and additional info.





Tract 3

3

# Certified Wetland Map

Field Office: Brookings FO  
Certified by: Steve Meyer, WS  
Legal desc: 17-109-47

Agency: USDA-NRCS  
Date: 1/23/15  
Tract: [REDACTED]



**Legend**

- AOI
- Wetlands
- Ditch
- NI
- NI/Ditch
- Tile



- W** Wetland
  - FW** Farmed Wetland Drained or modified & cropped prior to 12-23-1985, but still meets wetland criteria
  - PC** Prior Converted
  - NW** Non Wetland
- See NRCS CPA-O26E for definitions and additional info.





Tract 3

# Certified Wetland Determination

3

Field Office: Brookings FO

Agency: USDA-NRCS

Certified By: J. Todoroff

Certified Date: 5/29/12

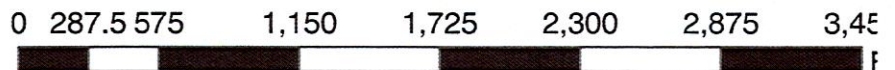
Legal Desc: S 17, T 109N, R 47W

Tract: [REDACTED]



**Legend**

- Certified Wetland Determination Boundary
- Wetlands
- Wetlands
- Ditch
- NI
- NI/Ditch
- Tile



- W Wetland
- FW Farmed Wetland Drained or modified & cropped prior to 12-23-1985, but still meets wetland criteria
- PC Prior Converted
- NW Non Wetland
- NI Not Inventoried Potential Waters of the US

See NRCS CPA-O26E for definitions and additional info.





Tract 4

4

# Certified Wetland Determination

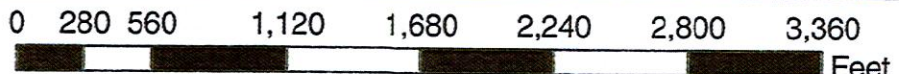
Field Office: Brookings Field Support Office  
Certified By: Kunze/Finnegan  
Legal Desc: W1/2 NE 1/4 Sec. 20, T109 N, R47W

Agency: USDA-NRCS  
Certified Date: 11/9/2011  
Tract: [REDACTED]



**Legend**

- Certified Wetland Determination Boundary
- Wetlands
- Wetlands
- Ditch
- NI
- NR/Ditch
- Tile



W Wetland  
 FW Farmed Wetland Drained or modified & cropped prior to 12-23-1985, but still meets wetland criteria  
 PC Prior Converted  
 NW Non Wetland  
 NI Not Inventoried Potential Waters of the US  
 See NRCS CPA-O26E for definitions and additional info.





Tract 4

4

# Certified Wetland Determination

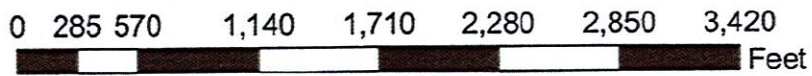
Field Office: Brookings FO  
Certified By: Ryan Forbes  
Legal Desc: 20-109-47

Agency: USDA-NRCS  
Certified Date: 8/12/2010  
Tract: [REDACTED]



**Legend**

Certified Wetland Determination Boundary  
 Wetlands  
 Wetlands  
 Ditch  
 NI  
 NNDitch  
 Tile



W Wetland  
 FW Farmed Wetland Drained or modified & cropped prior to 12-23-1985, but still meets wetland criteria  
 PC Prior Converted  
 NW Non Wetland  
 NI Not Inventoried Potential Waters of the US  
 See NRCS CPA-026E for definitions and additional info.





Tract 5

5

NOT TO SCALE

125.4

143.7



2

W  
Sandy soil

2



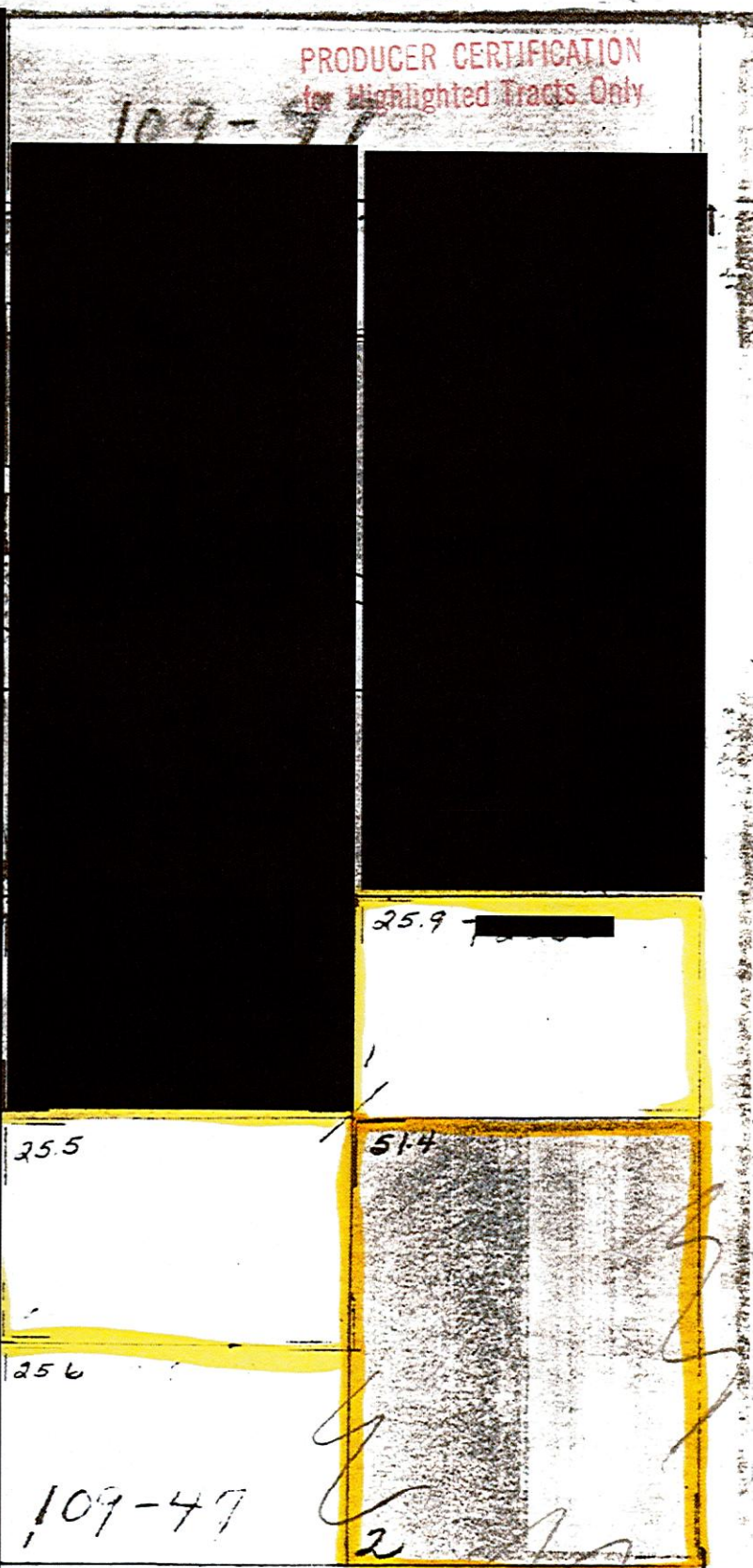
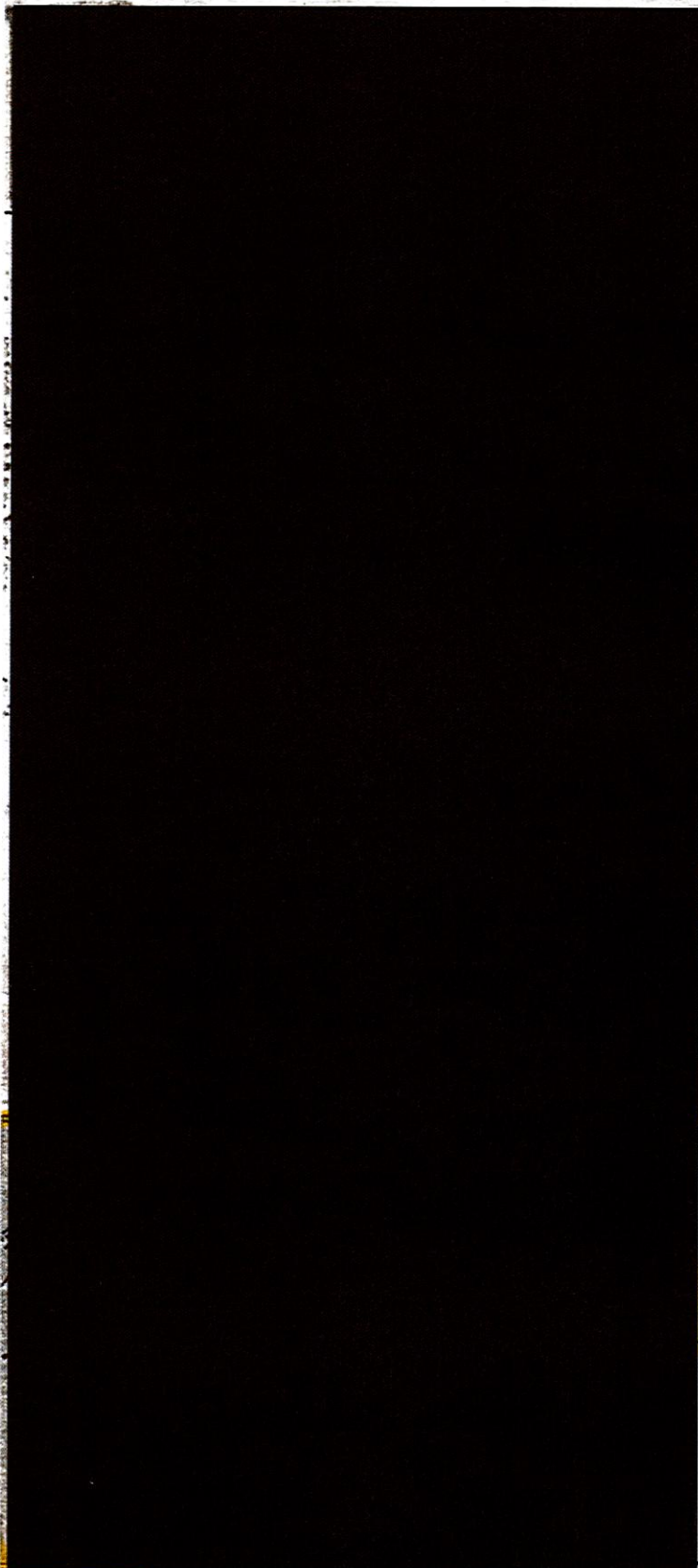
Tract 5

5

# NOT TO SCALE

PRODUCER CERTIFICATION  
for Highlighted Tracts Only

109-77





Tract 5

5

NOT TO SCALE

PRODUCER CERTIFICATION  
for Highlighted Tracts Only

92.4 T2253  
119.2

109-47

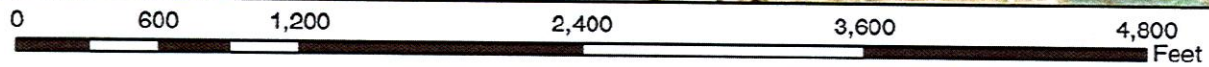
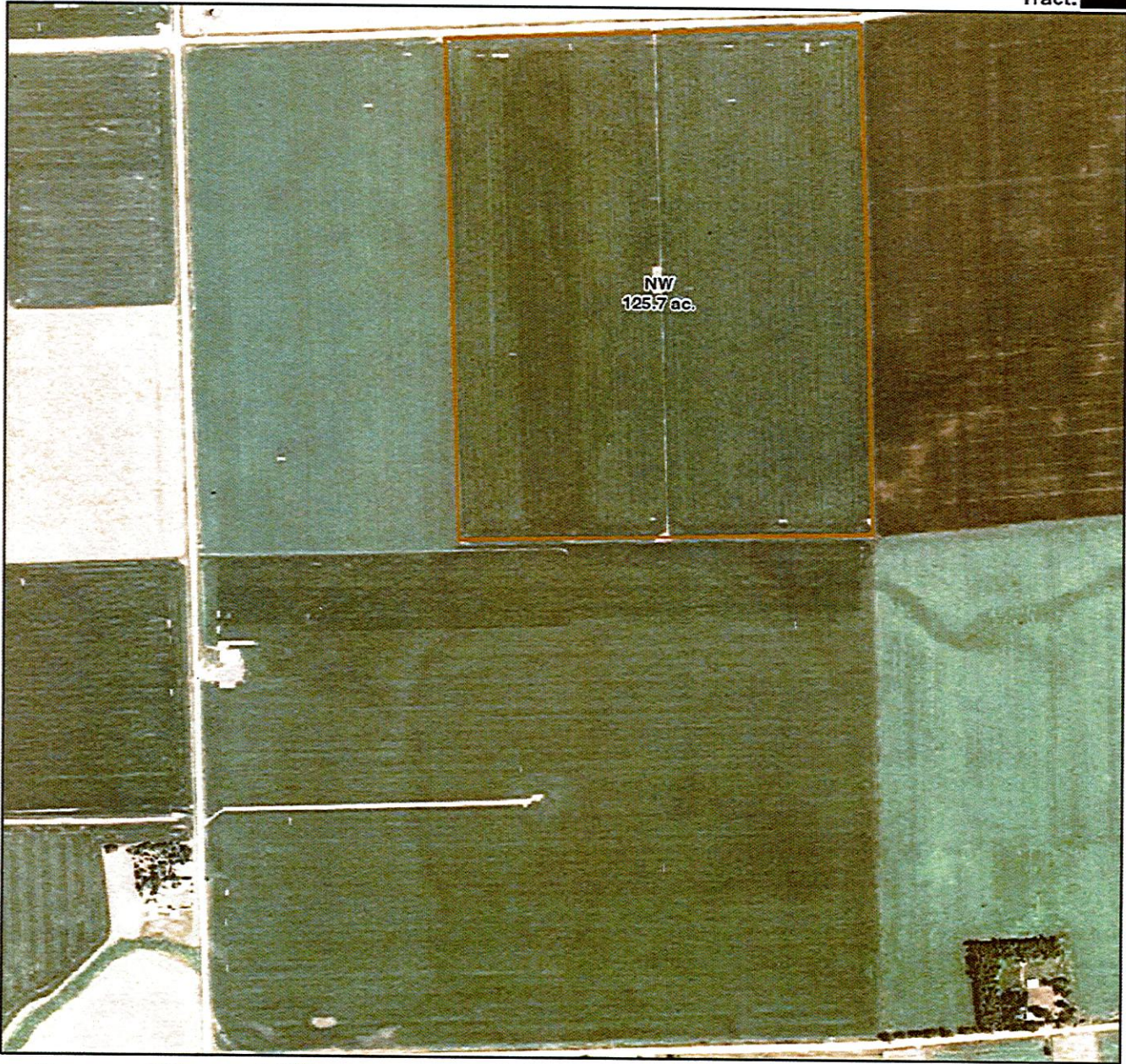
13.3



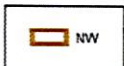
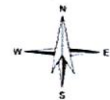
# Certified Wetland Determination

Field Office: Brookings Field Office  
Certified By: Scott Groepper  
Legal Description: NE4 27-109-47

Agency: USDA-NRCS  
Certified Date: 8/7/2018  
Tract: XXXXXXXXXX



Brookings County  
1:9,000 1 inch = 750 feet

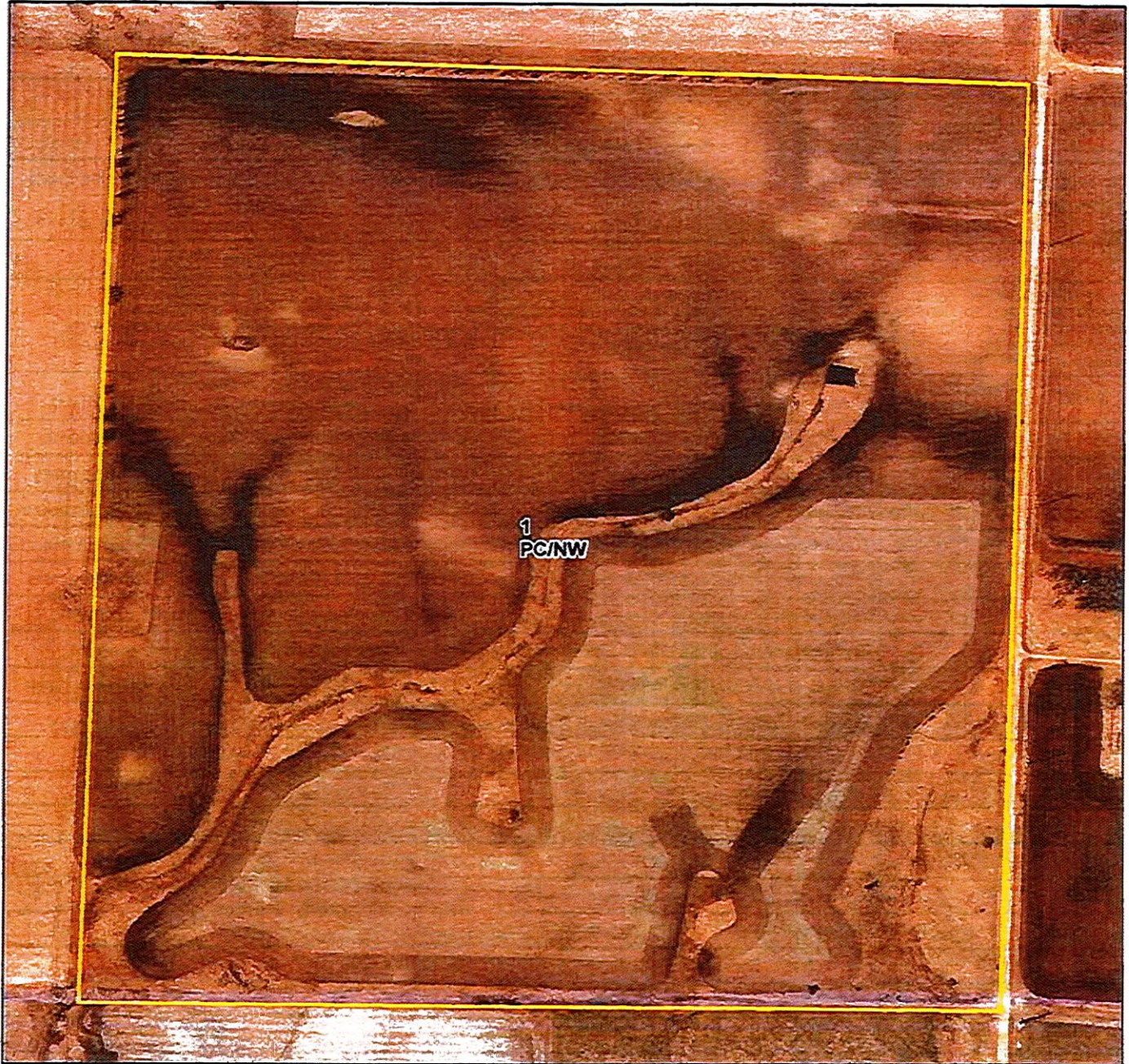




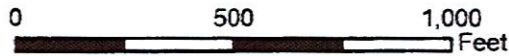
Customer: Jon Vaske  
Tract: [REDACTED]  
Date: September 13, 2013  
Town&Sec: Verdi 8

# Certified Wetland Determination

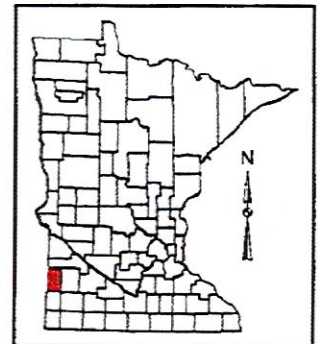
Agency: NRCS  
Field Office: Ivanhoe  
District: Lincoln SWCD



	Missing Label		CWTE
	PC/NW		MIW
	W		MW
	FW		MWM
	FWP		NW
	AW		NW/NAD
	CME		PC
	CPD		TP
	CW		WX



Maps are for graphical purposes only. They do not represent a legal survey. While every effort has been made to ensure that these data are accurate and reliable within the limits of the current state of the art, NRCS cannot assume liability for any damages caused by any errors or omissions in the data, nor as a result of the failure of the data to function on a particular system. NRCS makes no warranty, expressed or implied, nor does the fact of distribution constitute such a warranty.





Tract 8

8

# Certified Wetland Determination

Field Office: Brookings FO

Certified By: C. Veldkamp

Legal Desc: S 22, T 110N, R 48W

Agency: USDA-NRCS

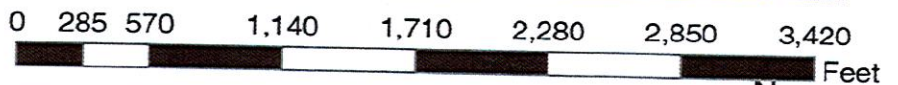
Certified Date: 10/31/2012

Tract: [REDACTED]



**Legend**

- Certified Wetland Determination Boundary
- Wetlands
- Wetlands
- Ditch
- NI
- NI/Ditch
- Tile



- W Wetland
- FW Farmed Wetland Drained or modified & cropped prior to 12-23-1985, but still meets wetland criteria
- PC Prior Converted
- NW Non Wetland
- NI Not Inventoried Potential Waters of the US

See NRCS CPA-O26E for definitions and additional info.

