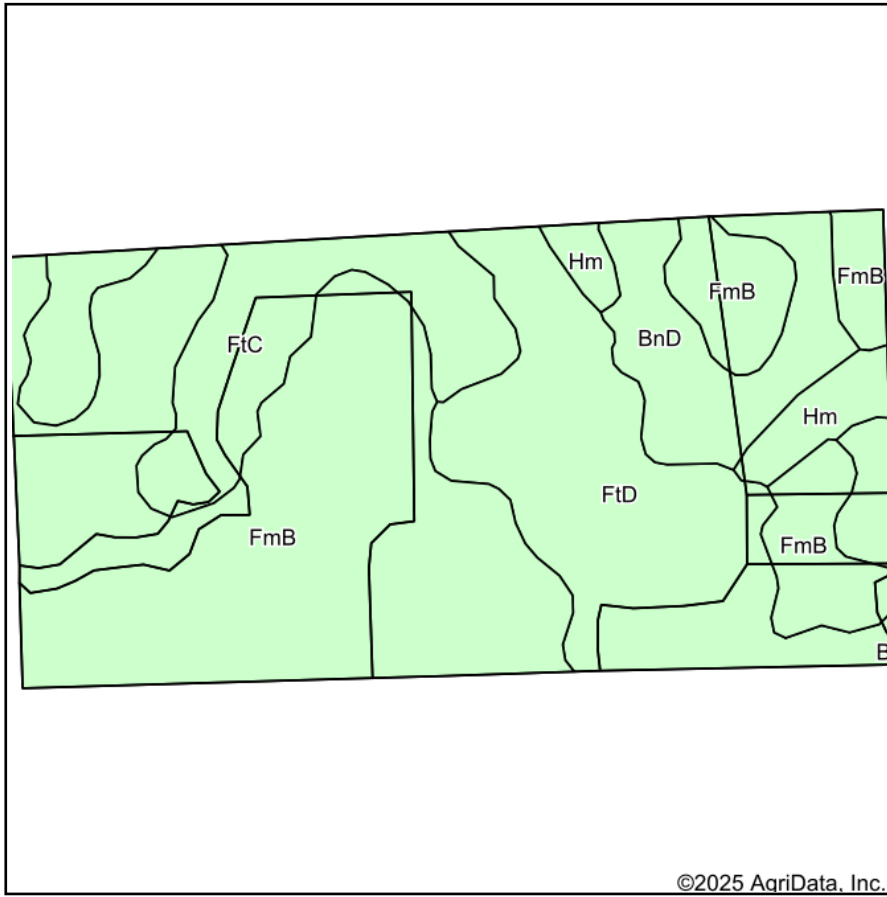
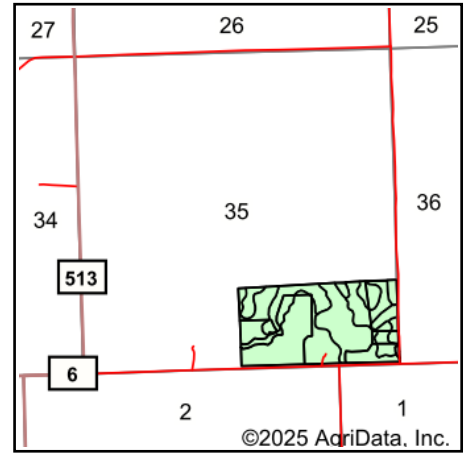


Soils Map



Soils data provided by USDA and NRCS.



State: **South Dakota**
 County: **Deuel**
 Location: **35-117N-48W**
 Township: **Low**
 Acres: **80.83**
 Date: **4/8/2025**

**BURLAGE
PETERSON**

Auctioneers & Realtors, LLC

Maps Provided By:



Area Symbol: SD039, Soil Area Version: 28							
Code	Soil Description	Acres	Percent of field	Soil Drainage	Non-Irr Class *c	Range Production (lbs/acre/yr)	Productivity Index
FmB	Forman-Aastad loams, 1 to 6 percent slopes	40.79	50.5%	Well drained	Ile	3918	83
FtD	Forman-Buse-Aastad loams, 2 to 15 percent slopes	18.82	23.3%	Well drained	IVe	3710	52
FtC	Forman-Buse-Aastad loams, 2 to 9 percent slopes	11.38	14.1%	Well drained	IVe	3811	64
BnD	Barnes, stony-Svea-Buse, stony loams, 2 to 12 percent slopes	7.07	8.7%	Well drained	VIIIs	3812	25
Hm	Hamerly-Badger complex, 0 to 2 percent slopes	2.77	3.4%	Somewhat poorly drained	IIs	4574	78
Weighted Average					3.18	3867.7	67.9

*c: Using Capabilities Class Dominant Condition Aggregation Method

Soils data provided by USDA and NRCS.