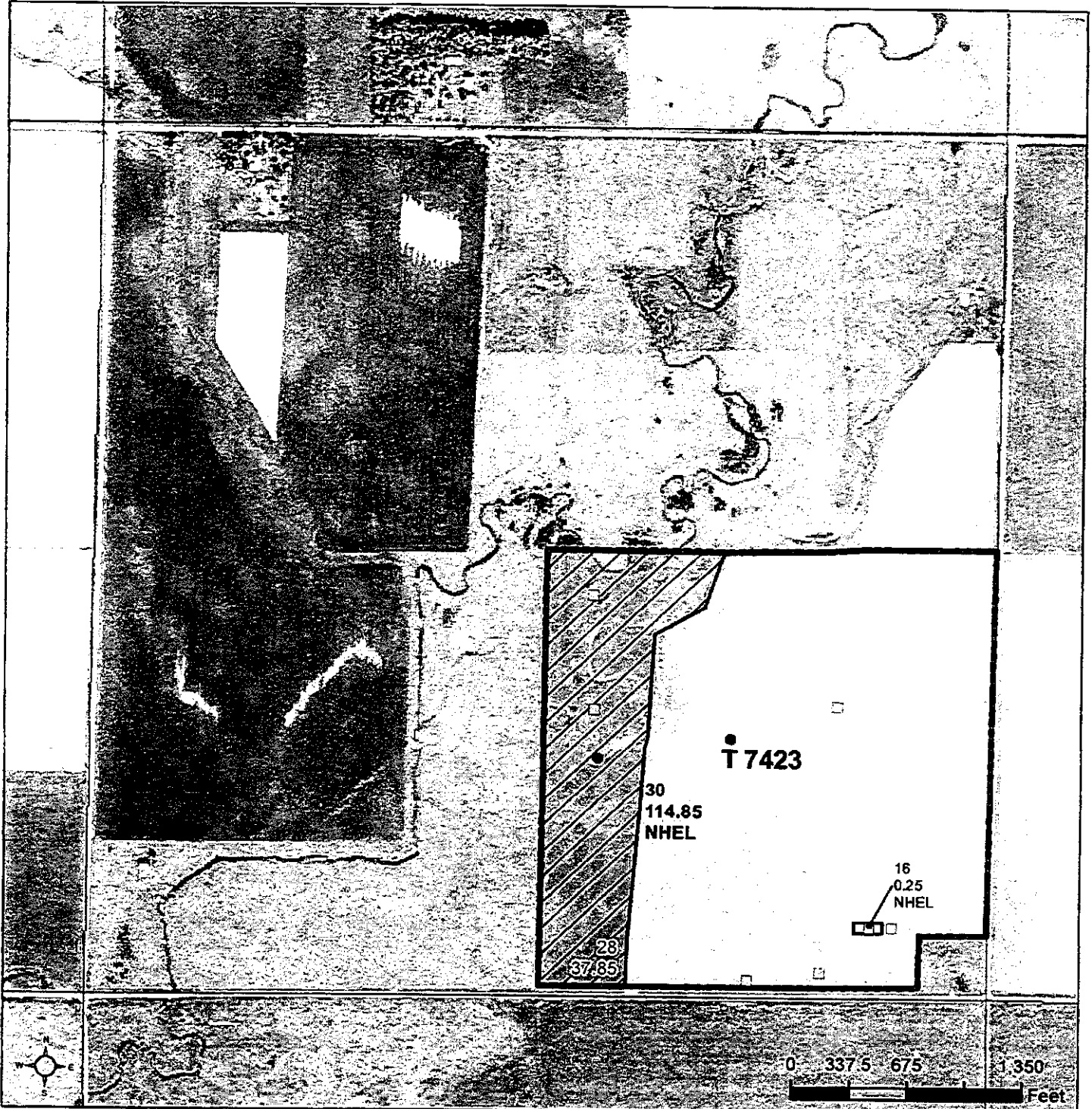




United States  
Department of  
Agriculture



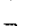

## Brookings County, South Dakota

1



**Common Land Unit**  Tract Boundary  
 Non-Cropland  PLSS  
 Cropland

### Wetland Determination Identifiers

-  Restricted Use
-  Limited Restrictions
-  Exempt from Conservation
-  Compliance Provisions

Unless otherwise noted,  
crops listed below are:  
Non-Irrigated  
Intended for Grain  
Corn = Yellow  
Soybeans = Common  
Wheat - HRS or HRW  
Sunflowers = Oil or Non

Producer Initial \_\_\_\_\_  
Date \_\_\_\_\_

Tract Cropland Total: 115.10 acres

2025 Program Year  
Map Created May 02, 2025

Farm 9360  
Tract 7423

3-111N-50W-Brookings

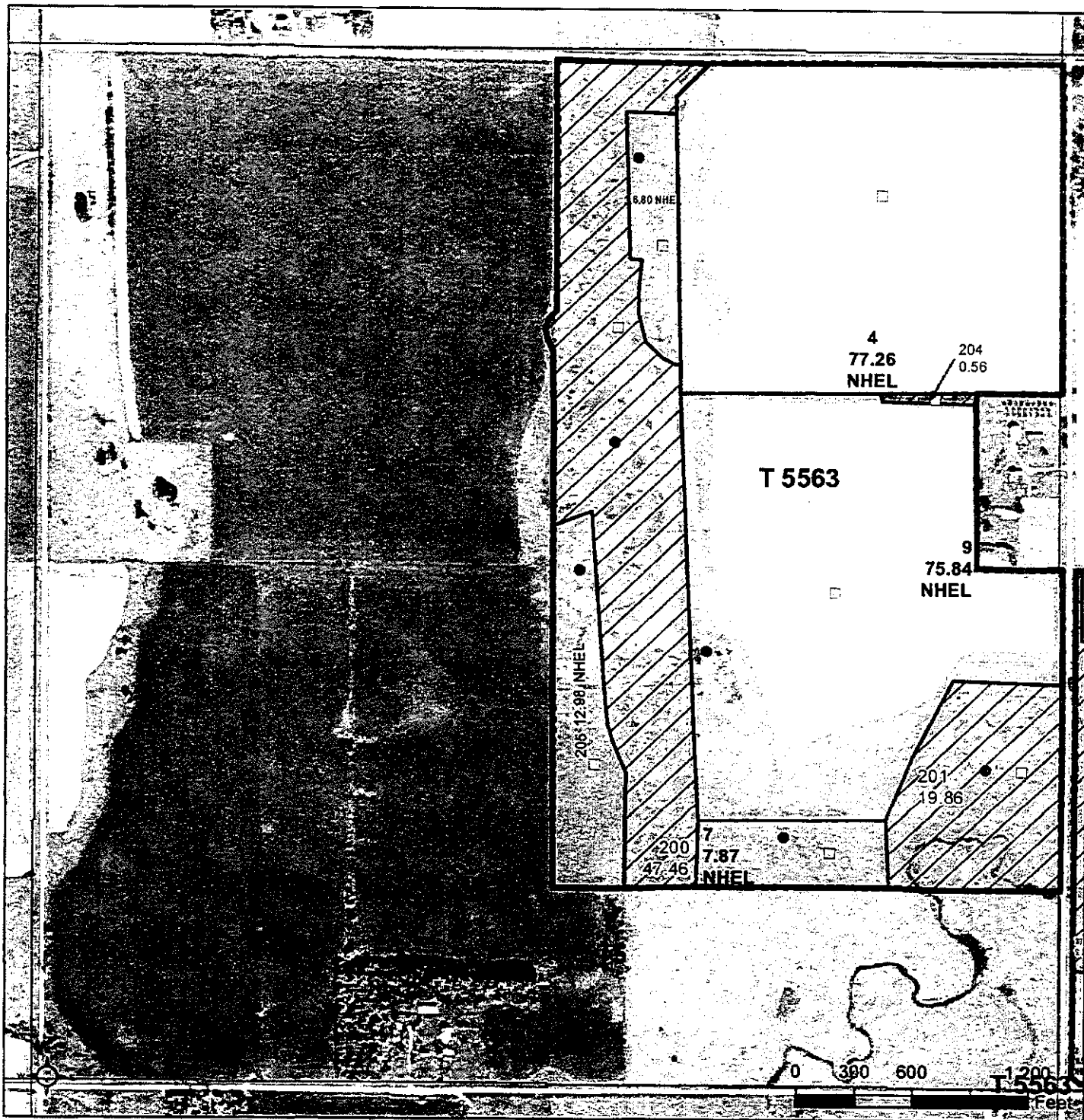
United States Department of Agriculture (USDA) Farm Service Agency (FSA) maps are for FSA Program administration only. This map does not represent a legal survey or reflect actual ownership; rather it depicts the information provided directly from the producer and/or National Agricultural Imagery Program (NAIP) imagery. The producer accepts the data 'as is' and assumes all risks associated with its use. USDA-FSA assumes no responsibility for actual or consequential damage incurred as a result of any user's reliance on this data outside FSA Programs. Wetland identifiers do not represent the size, shape, or specific determination of the area. Refer to your original determination (CPA-026 and attached maps) for exact boundaries and determinations or contact USDA Natural Resources Conservation Service (NRCS).



United States  
Department of  
Agriculture

# Brookings County, South Dakota

2



## Common Land Unit

- Non-Cropland
- Cropland

- Tract Boundary
- PLSS

## Wetland Determination Identifiers

- Restricted Use
- Limited Restrictions
- Exempt from Conservation Compliance Provisions

Unless otherwise noted,  
crops listed below are:  
Non-irrigated  
Intended for Grain  
Corn = Yellow  
Soybeans = Common  
Wheat - HRS or HRW  
Sunflowers = Oil or Non

Producer initial \_\_\_\_\_  
Date \_\_\_\_\_

Tract Cropland Total: 207.00 acres

2025 Program Year

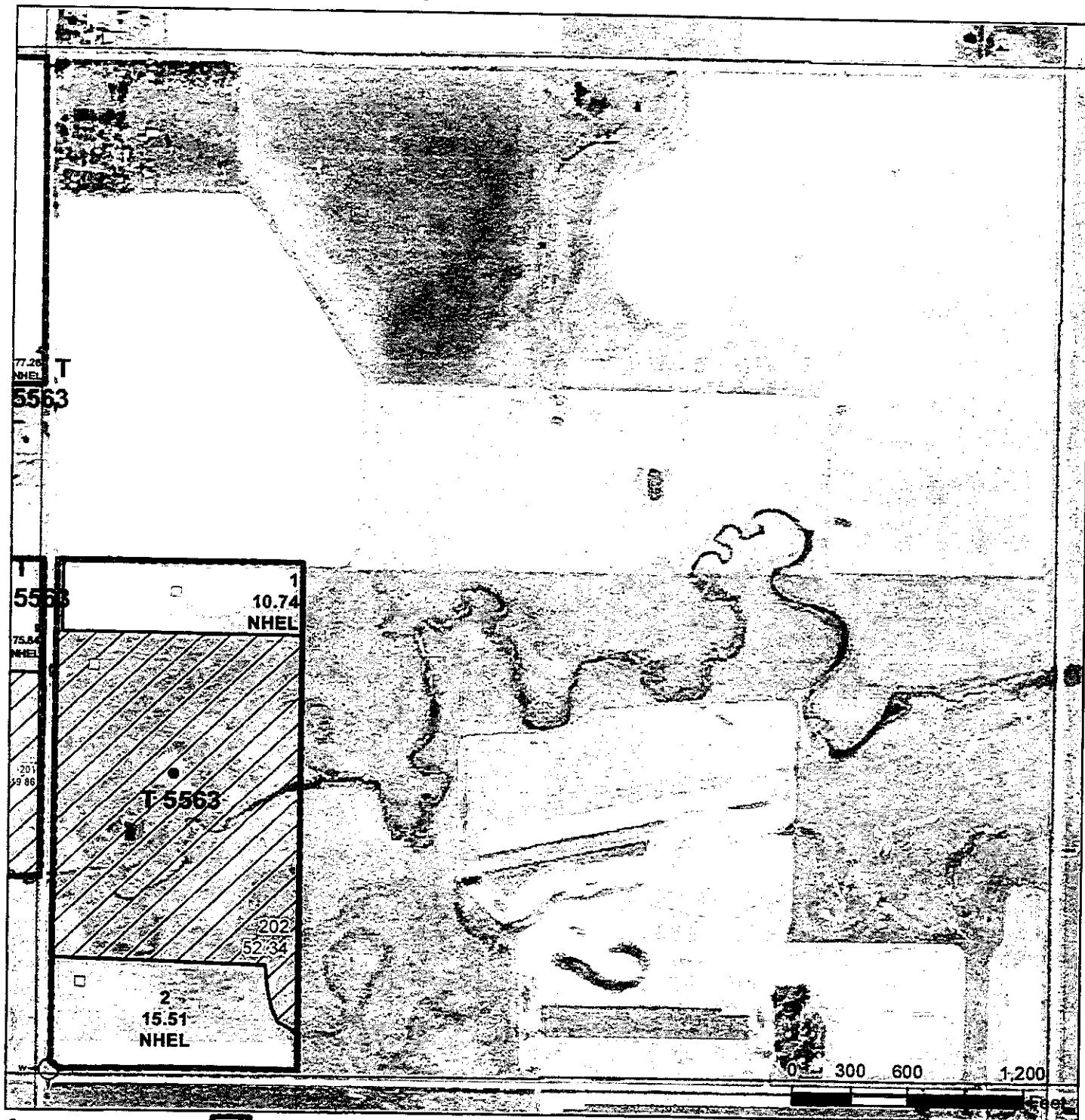
Map Created May 02, 2025

Farm 9360

Tract 5563

34-112N-50W-Brookings

United States Department of Agriculture (USDA) Farm Service Agency (FSA) maps are for FSA Program administration only. This map does not represent a legal survey or reflect actual ownership; rather it depicts the information provided directly from the producer and/or National Agricultural Imagery Program (NAIP) imagery. The producer accepts the data 'as is' and assumes all risks associated with its use. USDA-FSA assumes no responsibility for actual or consequential damage incurred as a result of any user's reliance on this data outside FSA Programs. Wetland identifiers do not represent the size, shape, or specific determination of the area. Refer to your original determination (CPA-026 and attached maps) for exact boundaries and determinations or contact USDA Natural Resources Conservation Service (NRCS)



**Common Land Unit**

☒ Non-Cropland

☐ Cropland

☐ Tract Boundary

☐ PLSS

**Wetland Determination Identifiers**

- ☒ Restricted Use
- ☐ Limited Restrictions
- ☐ Exempt from Conservation
- ☐ Compliance Provisions

Unless otherwise noted,  
crops listed below are:

Non-irrigated  
Intended for Grain  
Corn = Yellow  
Soybeans = Common  
Wheat - HRS or HRW  
Sunflowers = Oil or Non

Producer Initial \_\_\_\_\_  
Date \_\_\_\_\_

Tract Cropland Total: 207.00 acres

35-112N-50W-Brookings

2025 Program Year

Map Created May 02, 2025

Farm 9360

Tract 5563

United States Department of Agriculture (USDA) Farm Service Agency (FSA) maps are for FSA Program administration only. This map does not represent a legal survey or reflect actual ownership; rather it depicts the information provided directly from the producer and/or National Agricultural Imagery Program (NAIP) imagery. The producer accepts the data 'as is' and assumes all risks associated with its use. USDA-FSA assumes no responsibility for actual or consequential damage incurred as a result of any user's reliance on this data outside FSA Programs. Wetland identifiers do not represent the size, shape, or specific determination of the area. Refer to your original determination (CPA-026 and attached maps) for exact boundaries and determinations or contact USDA Natural Resources Conservation Service (NRCS)