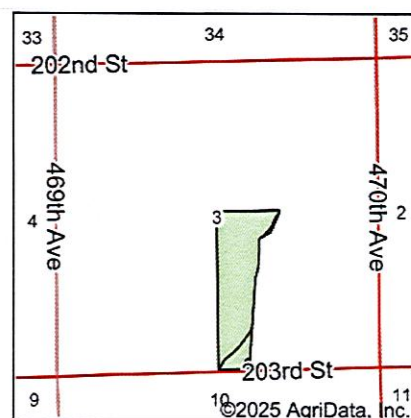
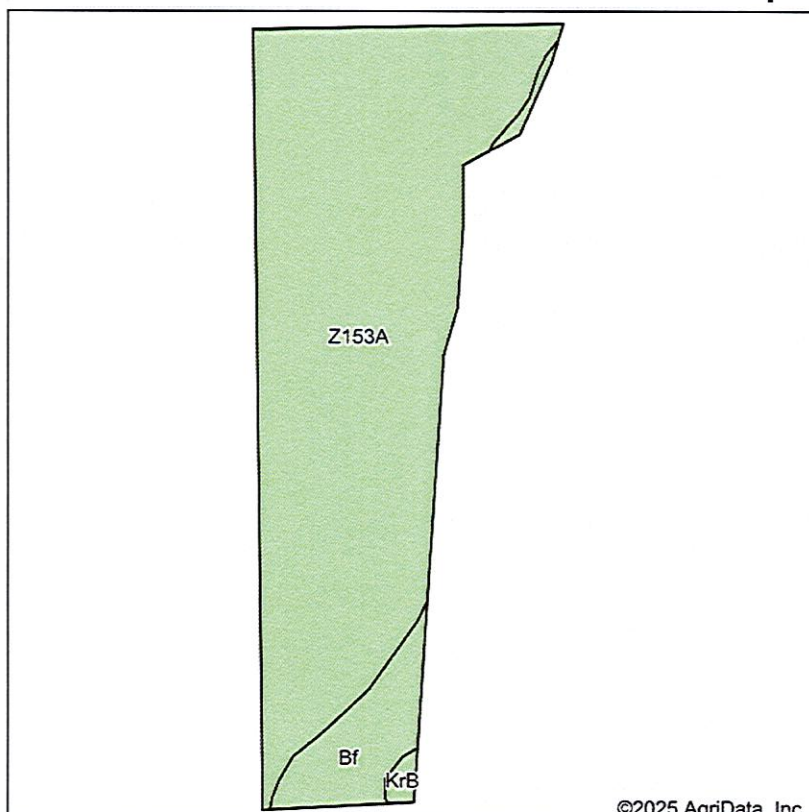


Soils Map



State: **South Dakota**
 County: **Brookings**
 Location: **3-11N-50W**
 Township: **Sterling**
 Acres: **39.1**
 Date: **8/18/2025**

**BURLAGE
 PETERSON**
 Auctioneers & Realtors, LLC

Maps Provided By:



Soils data provided by USDA and NRCS.

©2025 AgriData, Inc.

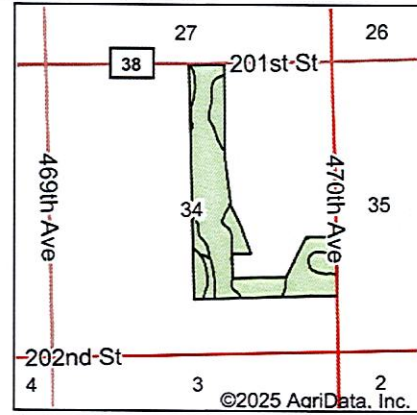
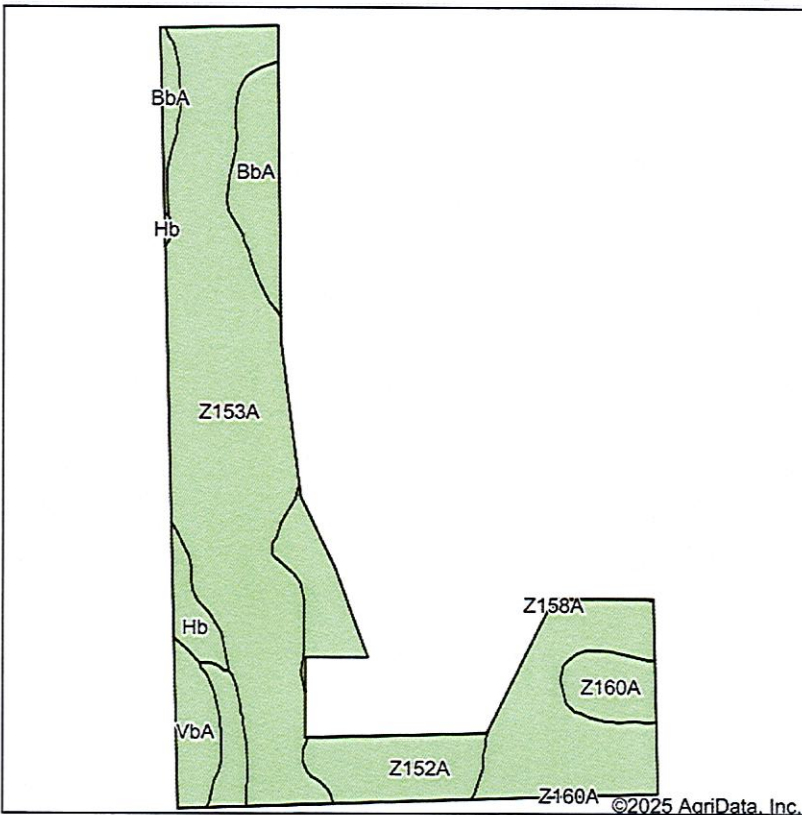
Area Symbol: SD011, Soil Area Version: 32

Code	Soil Description	Acres	Percent of field	Non-Irr Class	Productivity Index	*n NCCPI Overall
Z153A	Lamoure-Rauville silty clay loams, channeled, 0 to 2 percent slopes, frequently flooded	35.09	89.8%	Vlw	13	24
Bf	Brookings silty clay loam, 0 to 2 percent slopes	3.69	9.4%	lw	96	77
KrB	Kranzburg-Brookings silty clay loams, 1 to 6 percent slopes	0.32	0.8%	lle	87	70
Weighted Average				5.50	21.4	*n 29.4

*n: The aggregation method is "Weighted Average using all components"

Soils data provided by USDA and NRCS.

Soils Map



State: **South Dakota**
 County: **Brookings**
 Location: **34-112N-50W**
 Township: **Eureka**
 Acres: **98.93**
 Date: **8/18/2025**

**BURLAGE
PETERSON**

Auctioneers & Realtors, LLC

Maps Provided By:



Soils data provided by USDA and NRCS.

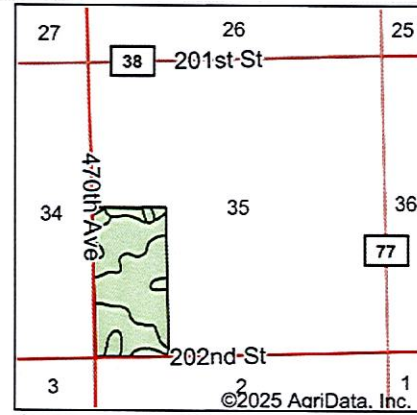
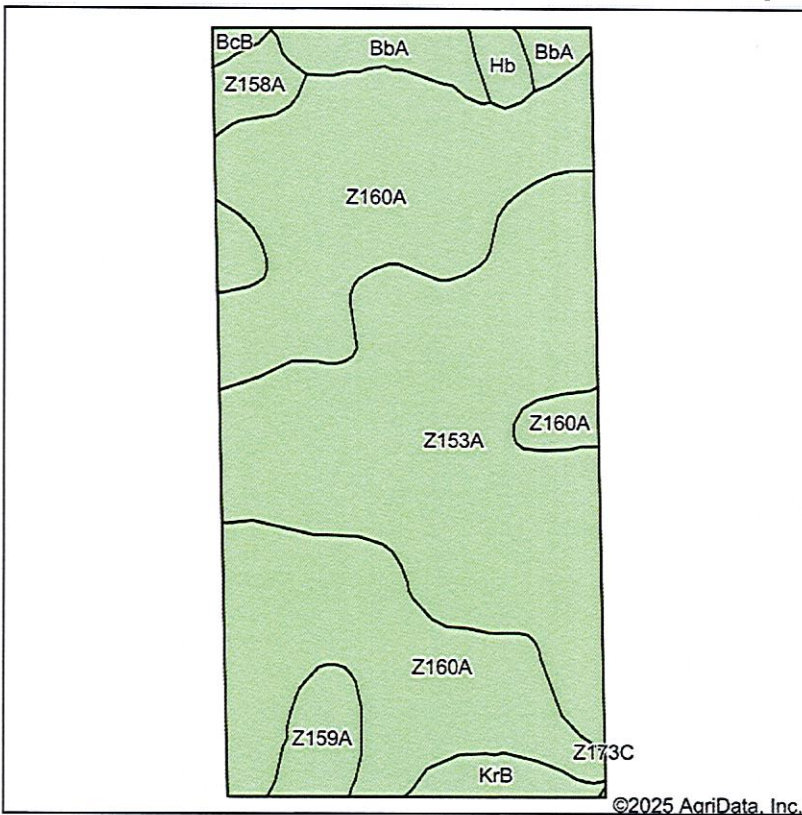
Area Symbol: SD011, Soil Area Version: 32

Code	Soil Description	Acres	Percent of field	Non-Irr Class	Productivity Index	*n NCCPI Overall
Z153A	Lamoure-Rauville silty clay loams, channeled, 0 to 2 percent slopes, frequently flooded	64.65	65.3%	VIw	13	24
Z152A	Lamoure silty clay loam, coteau, 0 to 1 percent slopes, occasionally flooded	12.75	12.9%	IIIw	67	61
BbA	Barnes clay loam, 0 to 2 percent slopes	7.75	7.8%	Iw	86	64
Z160A	Moritz, occasionally flooded-Lamoure, frequently flooded, complex, 0 to 2 percent slopes	6.83	6.9%	IIIs	65	55
VbA	Vienna-Brookings complex, 0 to 2 percent slopes	4.24	4.3%	Is	90	69
Hb	Hamerly-Badger complex, 0 to 2 percent slopes	2.65	2.7%	IIIs	78	57
Z158A	Marysland loam, 0 to 1 percent slopes, occasionally flooded	0.06	0.1%	IVw	32	40
Weighted Average				4.69	34.3	*n 36.9

*n: The aggregation method is "Weighted Average using all components"

Soils data provided by USDA and NRCS.

Soils Map



State: **South Dakota**
 County: **Brookings**
 Location: **35-112N-50W**
 Township: **Eureka**
 Acres: **81.81**
 Date: **8/18/2025**

**BURLAGE
PETERSON**

Auctioneers & Realtors, LLC

Maps Provided By:



Soils data provided by USDA and NRCS.

©2025 AgriData, Inc.

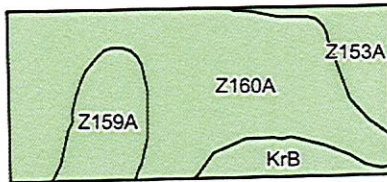
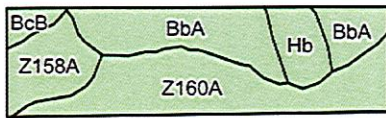
Area Symbol: SD011, Soil Area Version: 32

Code	Soil Description	Acres	Percent of field	Non-Irr Class	Productivity Index	*n NCCPI Overall
Z160A	Moritz, occasionally flooded-Lamoure, frequently flooded, complex, 0 to 2 percent slopes	37.76	46.1%	IIIs	65	55
Z153A	Lamoure-Rauville silty clay loams, channeled, 0 to 2 percent slopes, frequently flooded	33.11	40.5%	VIw	13	24
BbA	Barnes clay loam, 0 to 2 percent slopes	3.60	4.4%	Iw	86	64
Z159A	Divide loam, 0 to 2 percent slopes, occasionally flooded	2.54	3.1%	IIIs	54	39
KrB	Kranzburg-Brookings silty clay loams, 1 to 6 percent slopes	1.74	2.1%	IIe	87	70
Z158A	Marysland loam, 0 to 1 percent slopes, occasionally flooded	1.62	2.0%	IVw	32	40
Hb	Hamerly-Badger complex, 0 to 2 percent slopes	1.05	1.3%	IIs	78	57
BcB	Barnes-Buse loams, coteau, 2 to 6 percent slopes	0.39	0.5%	IIe	75	64
Weighted Average				4.11	44.6	*n 42.4

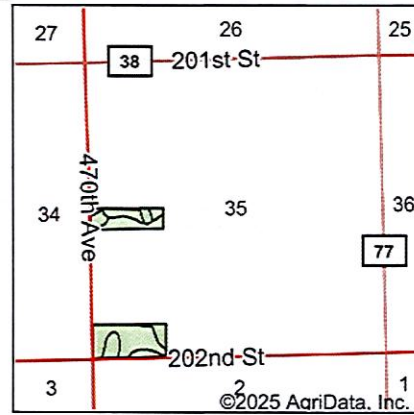
*n: The aggregation method is "Weighted Average using all components"

Soils data provided by USDA and NRCS.

Soils Map



©2025 AgriData, Inc.



State: **South Dakota**
 County: **Brookings**
 Location: **35-112N-50W**
 Township: **Eureka**
 Acres: **29.25**
 Date: **8/18/2025**

**BURLAGE
 PETERSON**
 Auctioneers & Realtors, LLC

Maps Provided By:



Soils data provided by USDA and NRCS.

Area Symbol: SD011, Soil Area Version: 32

Code	Soil Description	Acres	Percent of field	Non-Irr Class	Productivity Index	*n NCCPI Overall
Z160A	Moritz, occasionally flooded-Lamoure, frequently flooded, complex, 0 to 2 percent slopes	16.67	57.0%	IIIIs	65	55
BbA	Barnes clay loam, 0 to 2 percent slopes	3.60	12.3%	Iw	86	64
Z159A	Divide loam, 0 to 2 percent slopes, occasionally flooded	2.54	8.7%	IIIIs	54	39
Z153A	Lamoure-Rauville silty clay loams, channeled, 0 to 2 percent slopes, frequently flooded	1.90	6.5%	VIw	13	24
Z158A	Marysland loam, 0 to 1 percent slopes, occasionally flooded	1.65	5.6%	IVw	32	40
KrB	Kranzburg-Brookings silty clay loams, 1 to 6 percent slopes	1.45	5.0%	Ile	87	70
Hb	Hamerly-Badger complex, 0 to 2 percent slopes	1.05	3.6%	IIIs	78	57
BcB	Barnes-Buse loams, coteau, 2 to 6 percent slopes	0.39	1.3%	Ile	75	64
Weighted Average				2.91	63.1	*n 52.8

*n: The aggregation method is "Weighted Average using all components"

Soils data provided by USDA and NRCS.