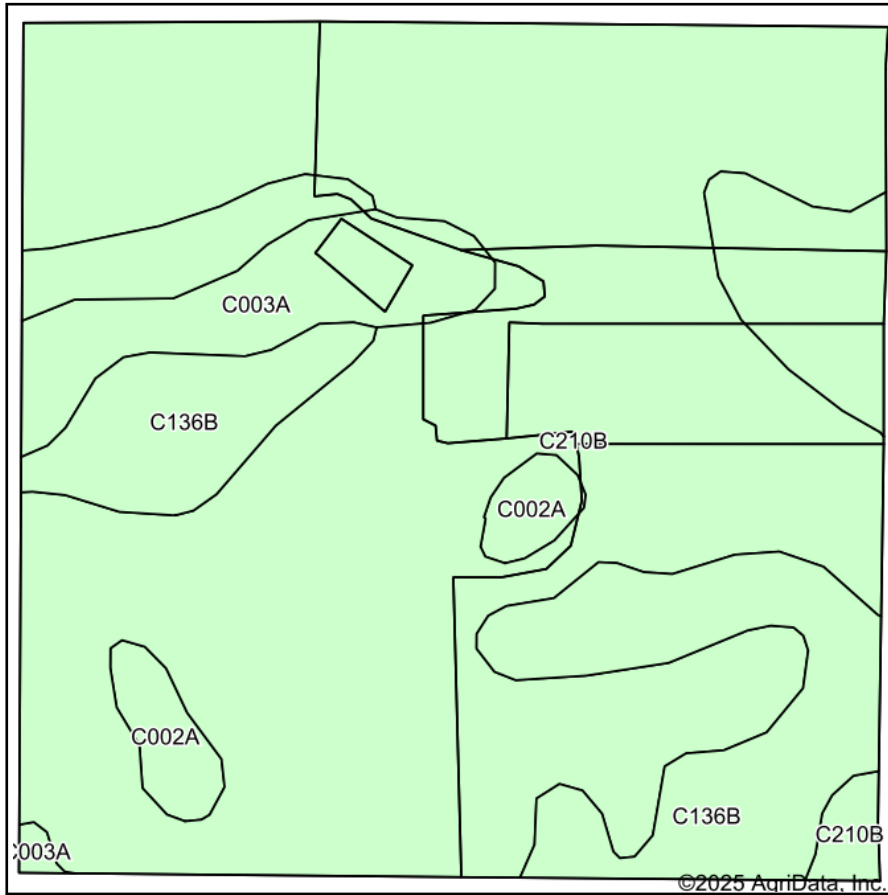
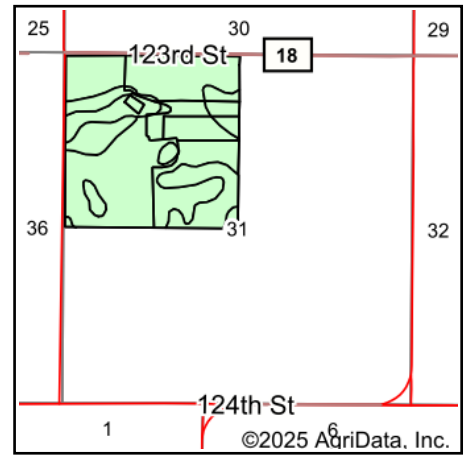


Tract 1 Soils Map



Soils data provided by USDA and NRCS.



State: **South Dakota**
 County: **McPherson**
 Location: **31-125N-71W**
 Township: **West McPherson**
 Acres: **156.98**
 Date: **9/8/2025**

**BURLAGE
PETERSON**

Auctioneers & Realtors, LLC

Maps Provided By:

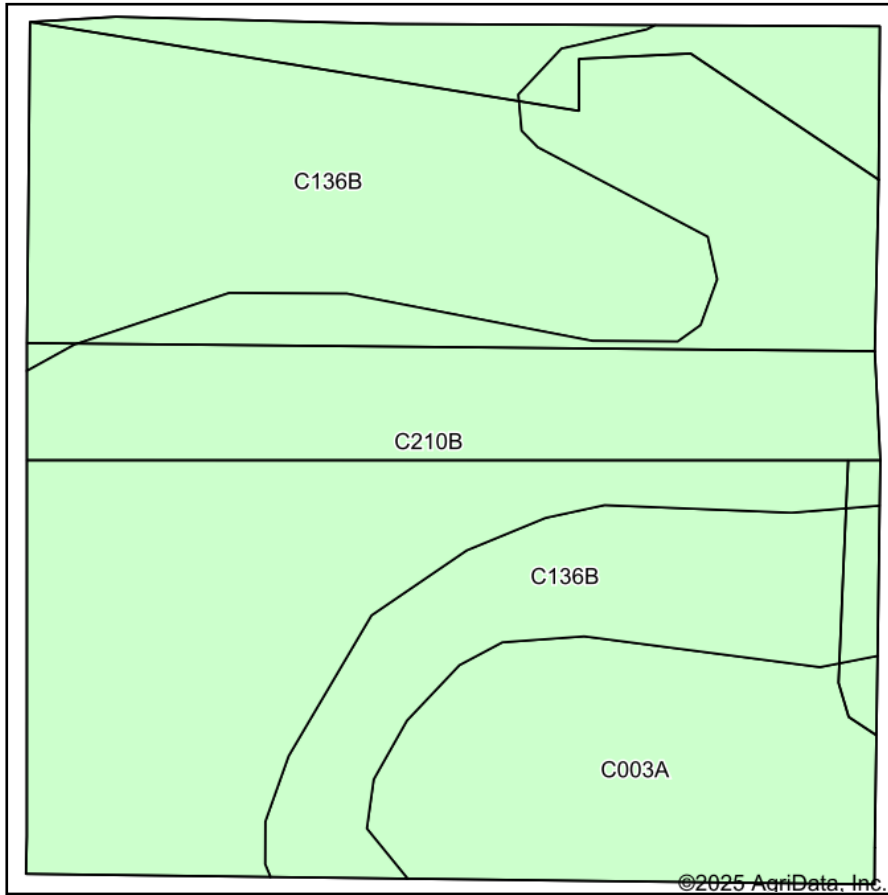


Area Symbol: SD089, Soil Area Version: 25

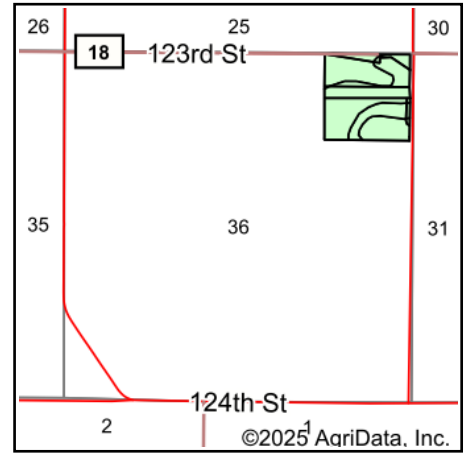
Code	Soil Description	Acres	Percent of field	Soil Drainage	Non-Irr Class *c	Range Production (lbs/acre/yr)	Productivity Index
C210B	Williams-Bowbells loams, 3 to 6 percent slopes	109.43	69.7%	Well drained	Ile	2876	83
C136B	Williams-Zahl loams, 3 to 6 percent slopes	33.77	21.5%	Well drained	Ile	2464	76
C003A	Parnell silty clay loam, 0 to 1 percent slopes	9.71	6.2%	Very poorly drained	Vw	5939	20
C002A	Tonka silt loam, 0 to 1 percent slopes	4.07	2.6%	Poorly drained	IVw	4379	45
Weighted Average					2.24	3015.8	76.6

*c: Using Capabilities Class Dominant Condition Aggregation Method

Tract 2 Soils Map



Soils data provided by USDA and NRCS.



State: **South Dakota**
 County: **McPherson**
 Location: **36-125N-72W**
 Township: **West McPherson**
 Acres: **39.02**
 Date: **9/8/2025**

**BURLAGE
PETERSON**

Auctioneers & Realtors, LLC

Maps Provided By:



Area Symbol: SD089, Soil Area Version: 25

Code	Soil Description	Acres	Percent of field	Soil Drainage	Non-Irr Class *c	Range Production (lbs/acre/yr)	Productivity Index
C210B	Williams-Bowbells loams, 3 to 6 percent slopes	19.07	48.8%	Well drained	Ile	2876	83
C136B	Williams-Zahl loams, 3 to 6 percent slopes	14.07	36.1%	Well drained	Ile	2464	76
C003A	Parnell silty clay loam, 0 to 1 percent slopes	5.88	15.1%	Very poorly drained	Vw	5939	20
Weighted Average					2.45	3189	71

*c: Using Capabilities Class Dominant Condition Aggregation Method