

160 +/- ACRE LAND AUCTION



HIGHLY PRODUCTIVE & QUALITY CORN & SOYBEAN FARM LOCATED ON A HWY. NEAR ELKTON & LAKE BENTON, IN VERDI TWP., LINCOLN CO. MN

As we are conducting a 1031 Exchange, we will offer this quality corn & soybean farm at public auction. Located from Elkton, SD, north 2 miles on Hwy. 13, 6 miles east on Hwy. 14, & 3 miles south on Hwy 2. Or from Lake Benton, MN, 4 miles west on Hwy. 14 & 3 miles south on Hwy. 2. Or ½ mile west & ½ mile north from Verdi, MN.

TUESDAY, DECEMBER 23, 2025 • SALE TIME: 10:00 A.M.

DAROLD E. RENKLY FAMILY TRUST & CORRINE L. RENKLY TRUST — SELLER

**BURLAGE
PETERSON**
Auctioneers & Realtors, LLC.

Burlage Peterson Auctioneers & Realtors, LLC

office@burlagepeterson.com
605-692-7102

160 +/- ACRE LAND AUCTION

HIGHLY PRODUCTIVE & QUALITY CORN & SOYBEAN FARM LOCATED ON A HWY. NEAR ELKTON & LAKE BENTON, IN VERDI TWP., LINCOLN CO. MN

As we are conducting a 1031 Exchange, we will offer this quality corn & soybean farm at public auction. Located from Elkton, SD, north 2 miles on Hwy. 13, 6 miles east on Hwy. 14, & 3 miles south on Hwy 2. Or from Lake Benton, MN, 4 miles west on Hwy. 14 & 3 miles south on Hwy. 2. Or ½ mile west & ½ mile north from Verdi, MN.

TUESDAY, DECEMBER 23rd, 2025 SALE TIME: 10:00 A.M.

AUCTIONEERS' NOTE: Here is an excellent opportunity to purchase a strong quarter of highly productive, well-rated Lincoln Co., MN farmland. This farm lies in a strong agricultural area along Hwy. 2, just 3 miles south of Hwy. 14. The farm features recently installed drain tile and the fall fieldwork is completed, with possession granted to the new buyer at closing. There is no buyer's premium, and the sale will be held live on-site with online bidding available.

160 +/- Acres; This high-quality corn and soybean farm has 154.84 Farmland acres, per the FSA office, with 140 +/- cropland acres under cultivation, benefited by recently installed drain tile, and 9.13 acres enrolled in CRP with a payment of \$252.64 per acre that runs through 2026. Per Surety AgriData, the farm has a high soil productivity rating of 89.7, primarily consisting of Kranzburg-Brookings silty clay loam soils. The farm has approximately over 8,900 ft. of drain tile, and benefits from being well fertilized and well operated over the years. The fall fieldwork is complete and goes with the farm at no additional cost to the buyer. Possession will be granted at closing, giving the new owner the opportunity to farm or lease the land for the upcoming crop year. This is an opportunity to acquire a quality quarter of farmland in a strong area on a paved road. Don't miss this sale, be prepared to buy!

Description: NW ¼ of Sec 26, T-109-N, R-46-W, Verdi Twp., Lincoln Co., MN

For additional information, contact the Auctioneers & Land Brokers or visit www.burlagepeterson.com.

TERMS: 10% non-refundable earnest money deposit due day of sale with balance due on or before January 26th, 2026. Title work and closing fees will be split 50/50 between buyer and seller. Possession will be granted at closing. The fall field work has been completed and goes with the farm to the new buyer. The seller will pay the 2025 real estate taxes and the buyers will be responsible for 2026 real estate taxes. Preliminary title work will be available prior to the sale. Fences are not guaranteed to be accurate boundary representations, and any new fencing will be the responsibility of the buyers. This property is sold subject to easements and restrictions, if any, and subject to confirmation of the owner. Buyers are responsible for conducting their own due diligence for future use and practices. Listed cropland acres are per the FSA office and Surety maps and are not guaranteed to be exact. The sellers do not provide any guarantees, warranties, or contingencies. Information provided is believed to be accurate but is not guaranteed. Statements made day of sale take precedence over prior written material. Auctioneers & Brokerage Firm represent the sellers in this transaction. Closing to be held through Petersen Law Office in Tyler, MN. Parties may conduct a 1031 exchange.

DAROLD E. RENKLY FAMILY TRUST & CORRINE L. RENKLY TRUST – SELLER

GLEN PETERSEN, ATTY. OF PETERSEN LAW OFFICE – CLOSING ATTORNEY

LAND BROKERAGE FIRM & AUCTIONEERS

Burlage Peterson Auctioneers & Realtors, LLC
Land Brokers – Auctioneers – Farm Managers – Realtors
317 4th St., Brookings SD / www.burlagepeterson.com
Office@burlagepeterson.com or 605-692-7102

**BURLAGE
PETERSON**
Auctioneers & Realtors, LLC.

LAND BROKERAGE FIRM & AUCTIONEERS

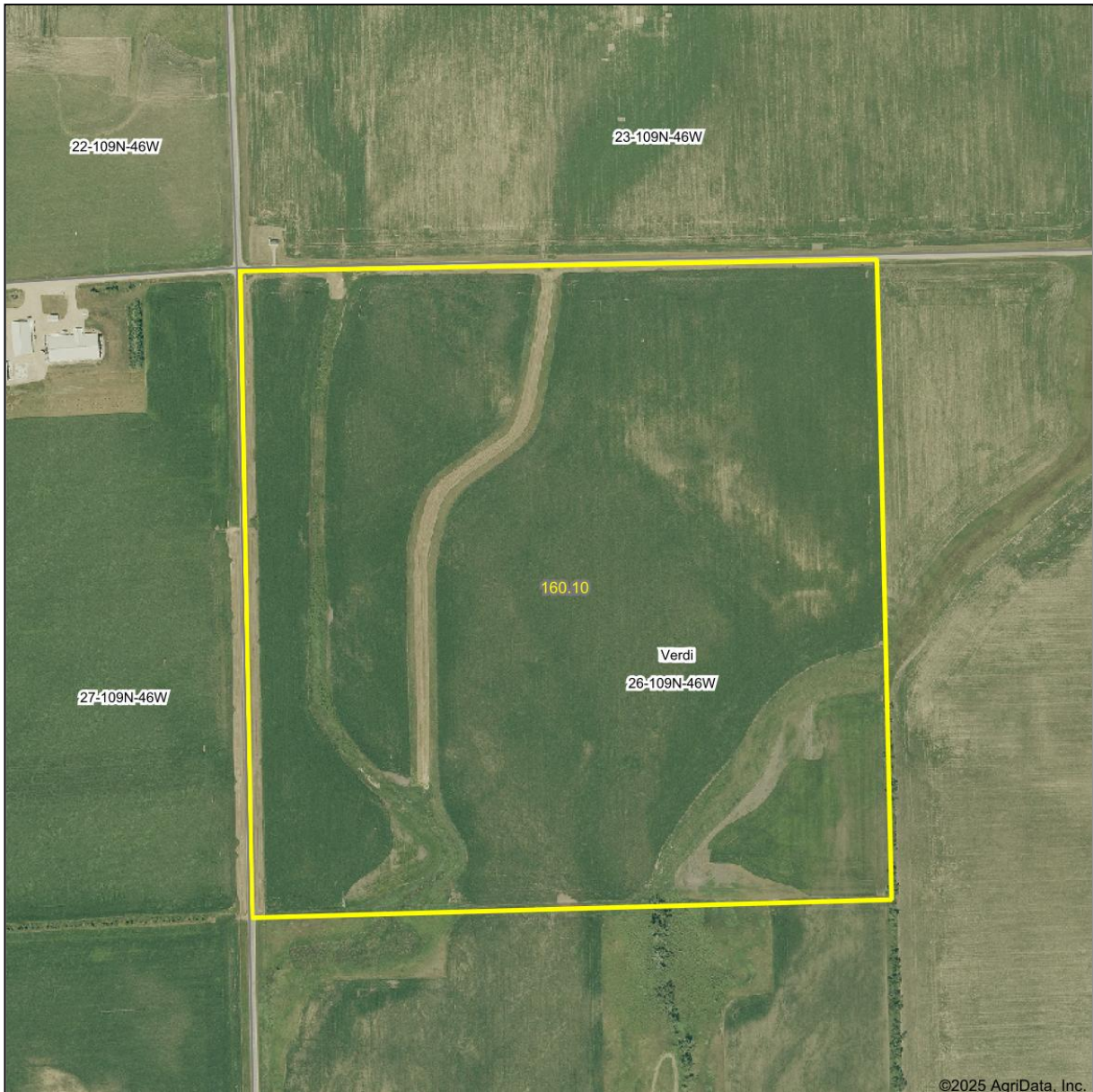
Burlage Peterson Auctioneers & Realtors, LLC

LAND BROKERS - AUCTIONEERS - REALTORS - FARM MANAGERS

office@burlagepeterson.com or 605-692-7102

317 4TH Street, Brookings SD - burlagepeterson.com

AERIAL MAP



**BURLAGE
PETERSON**

Auctioneers & Realtors, LLC

Maps Provided By



surety

© AgriData, Inc. 2025

www.AgriDataInc.com

Boundary Center: 44° 13' 21.29, -96° 21' 30.09

26-109N-46W
Lincoln County
Minnesota

0ft 641ft 1281ft



11/20/2025

LAND BROKERAGE FIRM & AUCTIONEERS

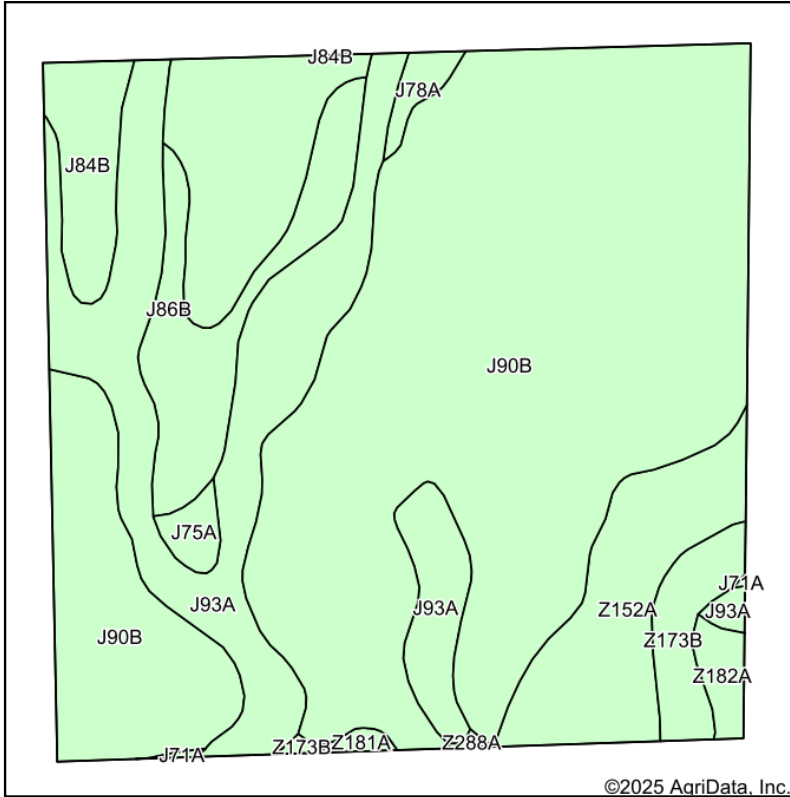
Burlage Peterson Auctioneers & Realtors, LLC

LAND BROKERS - AUCTIONEERS - REALTORS - FARM MANAGERS

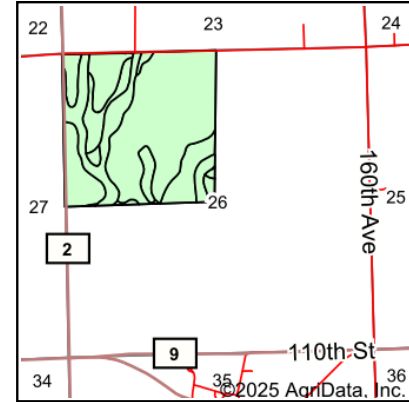
office@burlagepeterson.com or 605-692-7102

317 4TH Street, Brookings SD - burlagepeterson.com

SOILS MAP



Soils data provided by USDA and NRCS.



State: **Minnesota**
 County: **Lincoln**
 Location: **26-109N-46W**
 Township: **Verdi**
 Acres: **160.47**
 Date: **11/20/2025**

**BURLAGE
PETERSON**
 Auctioneers & Realtors, LLC

Maps Provided By:

 © AgriData, Inc. 2025 www.AgrIDataInc.com



Area Symbol: MN081, Soil Area Version: 24

Code	Soil Description	Acres	Percent of field	Non-Irr Class	Productivity Index	*n NCCPI Overall
J90B	Kranzburg-Brookings silty clay loams, 1 to 6 percent slopes	100.17	62.5%	Ile	93	70
J93A	Hidewood-Badger complex, 0 to 2 percent slopes	26.86	16.7%	IIw	92	70
Z152A	Lamoure silty clay loam, coteau, 0 to 1 percent slopes, occasionally flooded	11.25	7.0%	IIIw	78	61
J86B	Vienna silty clay loam, 3 to 6 percent slopes	9.10	5.7%	Ile	90	63
J84B	Strayhoss loam, 2 to 6 percent slopes	4.82	3.0%	Ile	78	61
Z173B	Renshaw-Sioux complex, coteau, 2 to 6 percent slopes	3.86	2.4%	Vs	48	38
Z182A	Estelline silt loam, coteau, 0 to 2 percent slopes	1.51	0.9%	IIIs	75	60
J75A	Fordville loam, coteau, 0 to 2 percent slopes	1.19	0.7%	IIIs	64	54
J78A	Lismore silty clay loam, 1 to 3 percent slopes	1.09	0.7%	Ie	98	71
Z181A	Brandt silty clay loam, 0 to 2 percent slopes	0.40	0.2%	Is	80	71
Z288A	Trosky silty clay loam, coteau, 0 to 2 percent slopes	0.12	0.1%	IVw	83	59
J71A	Brookings silty clay loam, 0 to 2 percent slopes	0.10	0.1%	Iw	98	77
Weighted Average				2.13	89.7	*n 67.7

*n: The aggregation method is "Weighted Average using all components"

Soils data provided by USDA and NRCS.

LAND BROKERAGE FIRM & AUCTIONEERS

Burlage Peterson Auctioneers & Realtors, LLC

LAND BROKERS - AUCTIONEERS - REALTORS - FARM MANAGERS

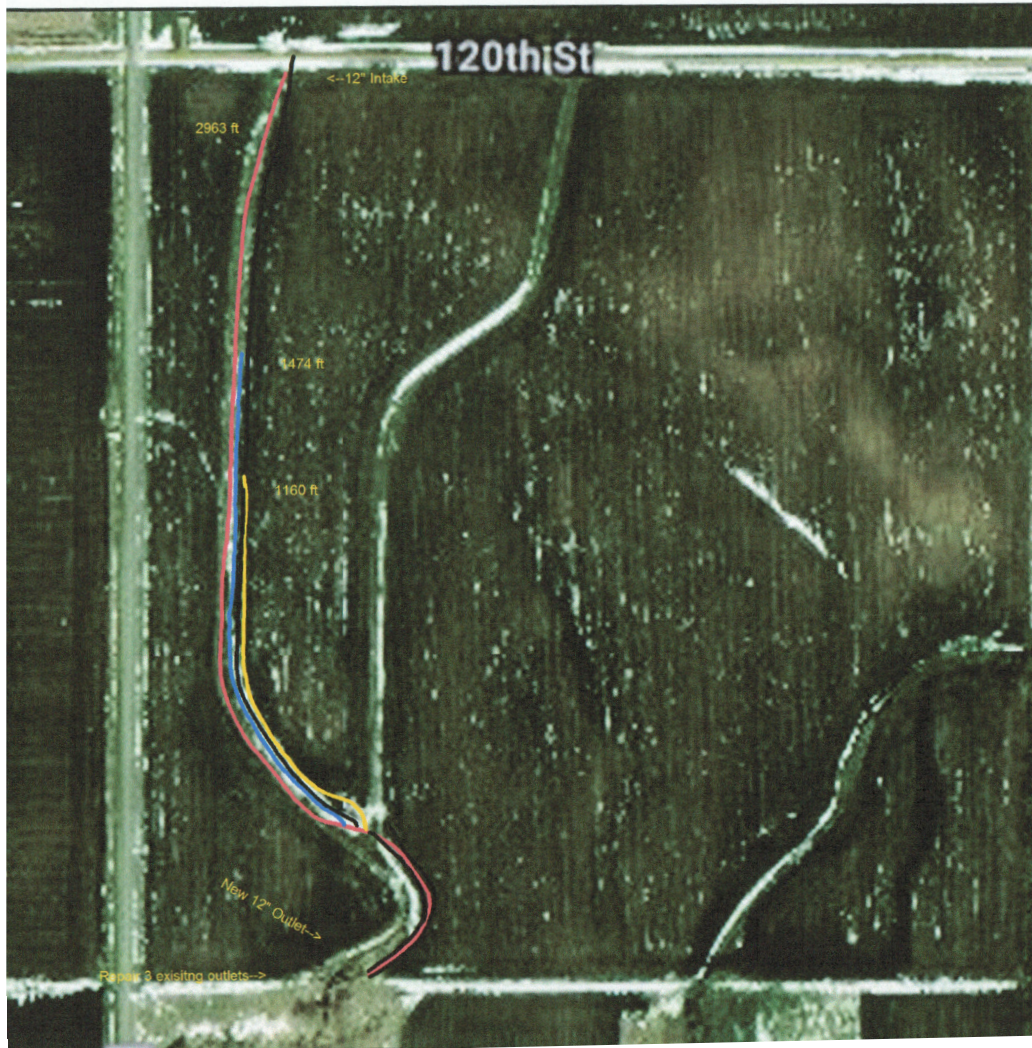
office@burlagepeterson.com or 605-692-7102

317 4TH Street, Brookings SD - burlagepeterson.com

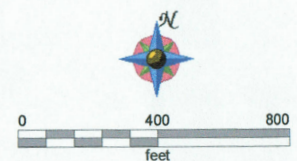
TILE MAP

Sec. 26 NW Verdi Twp.
Name

5 Inch Tile	1474.40 ft
6 Inch Tile	1160.24 ft
12 inch flex	2963.06 ft
Existing Tile	3388.41 ft



Client: Renkly, Dan
Farm: North Verdi Farm
Field: Sec. 26 NW Verdi Twp.
Name: Summer 2024
Date: 9/30/2024



Trimble

LAND BROKERAGE FIRM & AUCTIONEERS

Burlage Peterson Auctioneers & Realtors, LLC

LAND BROKERS - AUCTIONEERS - REALTORS - FARM MANAGERS

office@burlagepeterson.com or 605-692-7102

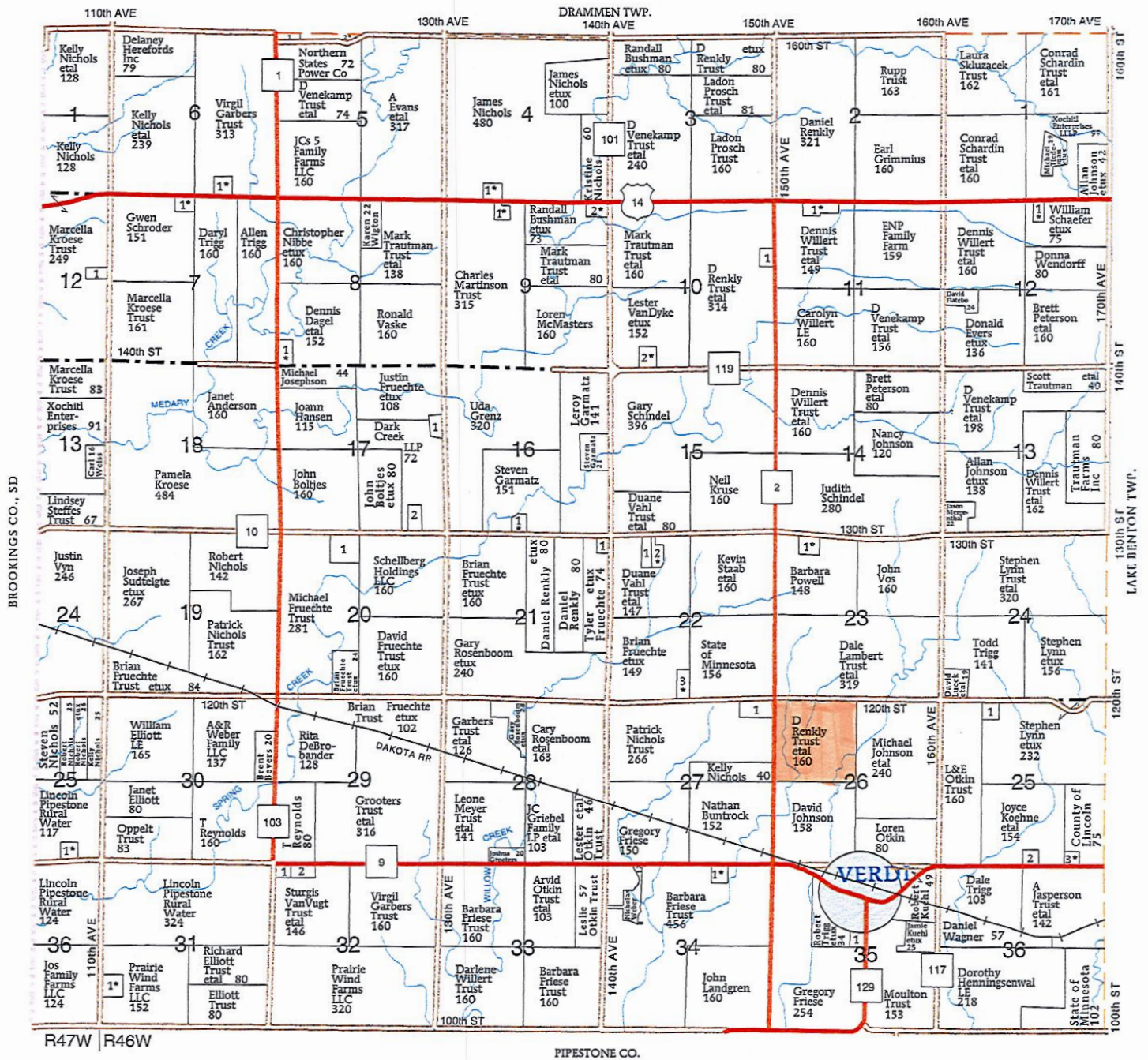
317 4TH Street, Brookings SD - burlagepeterson.com

PLAT MAP

T-109-N

VERDI PLAT

R-46-47-W



LAND BROKERAGE FIRM & AUCTIONEERS

Burlage Peterson Auctioneers & Realtors, LLC

LAND BROKERS - AUCTIONEERS - REALTORS - FARM MANAGERS

office@burlagepeterson.com or 605-692-7102

317 4TH Street, Brookings SD - burlagepeterson.com

FSA MAP



United States
Department of
Agriculture

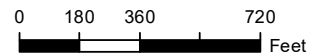
Lincoln County, Minnesota

Farm 5938

Tract 1890

2025 Program Year

Map Created April 26, 2025



Unless otherwise noted:
Shares are 100% operator
Crops are non-irrigated
Corn = yellow for grain
Soybeans = common soybeans for grain
Wheat = HRS, HRW = Grain
Sunflower = Oil, Non-Oil = Grain
Oats and Barley = Spring for grain
Rye = for grain
Peas = process
Alfalfa, Mixed Forage AGM, GMA, IGS = for forage
Beans = Dry Edible
NAG = for GZ
Canola = Spring for seed

Common Land Unit

- Non-Cropland
- Cropland
- CRP
- Tract Boundary

Wetland Determination Identifiers

- Restricted Use
- Limited Restrictions
- Exempt from Conservation
- Compliance Provisions

Tract Cropland Total: 145.91 acres

United States Department of Agriculture (USDA) Farm Service Agency (FSA) maps are for FSA Program administration only. This map does not represent a legal survey or reflect actual ownership; rather it depicts the information provided directly from the producer and/or National Agricultural Imagery Program (NAIP) imagery. The producer accepts the data 'as is' and assumes all risks associated with its use. USDA-FSA assumes no responsibility for actual or consequential damage incurred as a result of any user's reliance on this data outside FSA Programs. Wetland identifiers do not represent the size, shape, or specific determination of the area. Refer to your original determination (CPA-026 and attached maps) for exact boundaries and determinations or contact USDA Natural Resources Conservation Service (NRCS). This map displays the 2023 NAIP imagery.

LAND BROKERAGE FIRM & AUCTIONEERS

Burlage Peterson Auctioneers & Realtors, LLC

LAND BROKERS - AUCTIONEERS - REALTORS - FARM MANAGERS

office@burlagepeterson.com or 605-692-7102

317 4TH Street, Brookings SD - burlagepeterson.com

YIELDS AND BASES

MINNESOTA
LINCOLN
Form: FSA-156EZ



United States Department of Agriculture
Farm Service Agency

FARM : 5938

Prepared : 11/20/25 2:45 PM CST

Crop Year : 2026

See Page 2 for non-discriminatory Statements.

Abbreviated 156 Farm Record

Operator Name : RENKLY FARMS INC
CRP Contract Number(s) : 11336A
Recon ID : 27-081-2014-63
Transferred From : None
ARCPLC G/F Eligibility : Eligible

Farm Land Data

Farmland	Cropland	DCP Cropland	WBP	EWP	WRP	GRP	Sugarcane	Farm Status	Number Of Tracts
154.84	145.91	145.91	0.00	0.00	0.00	0.00	0.0	Active	1
State Conservation	Other Conservation	Effective DCP Cropland	Double Cropped		CRP	MPL	DCP Ag.Rel. Activity	SOD	
0.00	0.00	136.78	0.00		9.13	0.00	0.00	0.00	

Crop Election Choice

ARC Individual	ARC County	Price Loss Coverage
None	CORN, SOYBN	None

DCP Crop Data

Crop Name	Base Acres	CCC-505 CRP Reduction Acres	PLC Yield	HIP
Corn	107.24	2.06	131	
Soybeans	29.54	2.06	36	
TOTAL	136.78	4.12		

NOTES

--

Tract Number : 1890

Description : NW26 VERDI
FSA Physical Location : MINNESOTA/LINCOLN
ANSI Physical Location : MINNESOTA/LINCOLN
BIA Unit Range Number :
HEL Status : NHEL: No agricultural commodity planted on undetermined fields
Wetland Status : Tract does not contain a wetland
WL Violations : None
Owners : DAROLD E RENKLY FAMILY TRUST, CORRINE L RENKLY TRUST
Other Producers : CORRINE RENKLY
Recon ID : None

Tract Land Data

Farm Land	Cropland	DCP Cropland	WBP	EWP	WRP	GRP	Sugarcane
154.84	145.91	145.91	0.00	0.00	0.00	0.00	0.0

Page: 1 of 2

LAND BROKERAGE FIRM & AUCTIONEERS

Burlage Peterson Auctioneers & Realtors, LLC

LAND BROKERS - AUCTIONEERS - REALTORS - FARM MANAGERS

office@burlagepeterson.com or 605-692-7102

317 4TH Street, Brookings SD - burlagepeterson.com



LAND BROKERAGE FIRM & AUCTIONEERS

Burlage Peterson Auctioneers & Realtors, LLC

LAND BROKERS - AUCTIONEERS - REALTORS - FARM MANAGERS

office@burlagepeterson.com or 605-692-7102

317 4TH Street, Brookings SD - burlagepeterson.com

[illegible]

Burlage Peterson Auctioneers & Realtors, LLC
LAND BROKERS - AUCTIONEERS - REALTORS - FARM MANAGERS
office@burlagepeterson.com or 605-692-7102
317 4TH Street, Brookings SD - burlagepeterson.com

317 4TH Street, Brookings SD - burlagepeterson.com