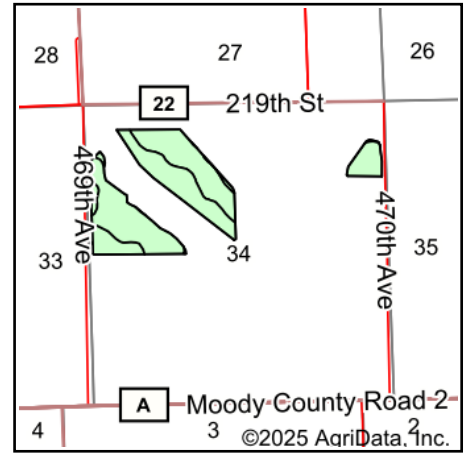
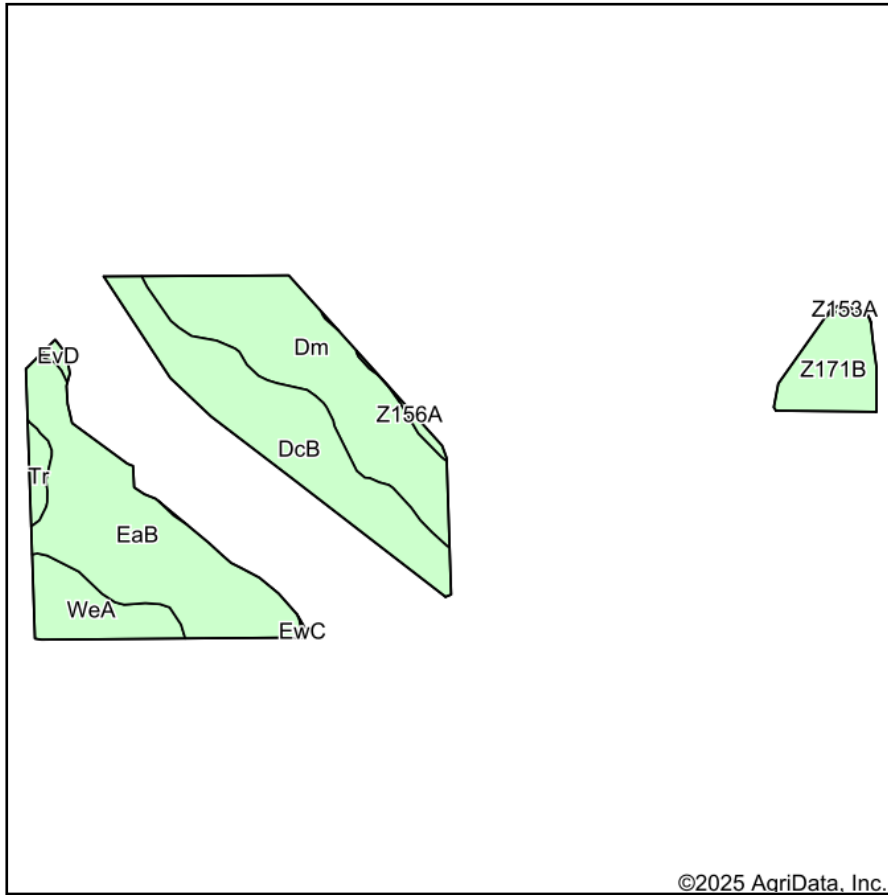


Soils Map



State: **South Dakota**
 County: **Brookings**
 Location: **34-109N-50W**
 Township: **Medary**
 Acres: **80.52**
 Date: **11/10/2025**

**BURLAGE
PETERSON**
 Auctioneers & Realtors, LLC

Maps Provided By:



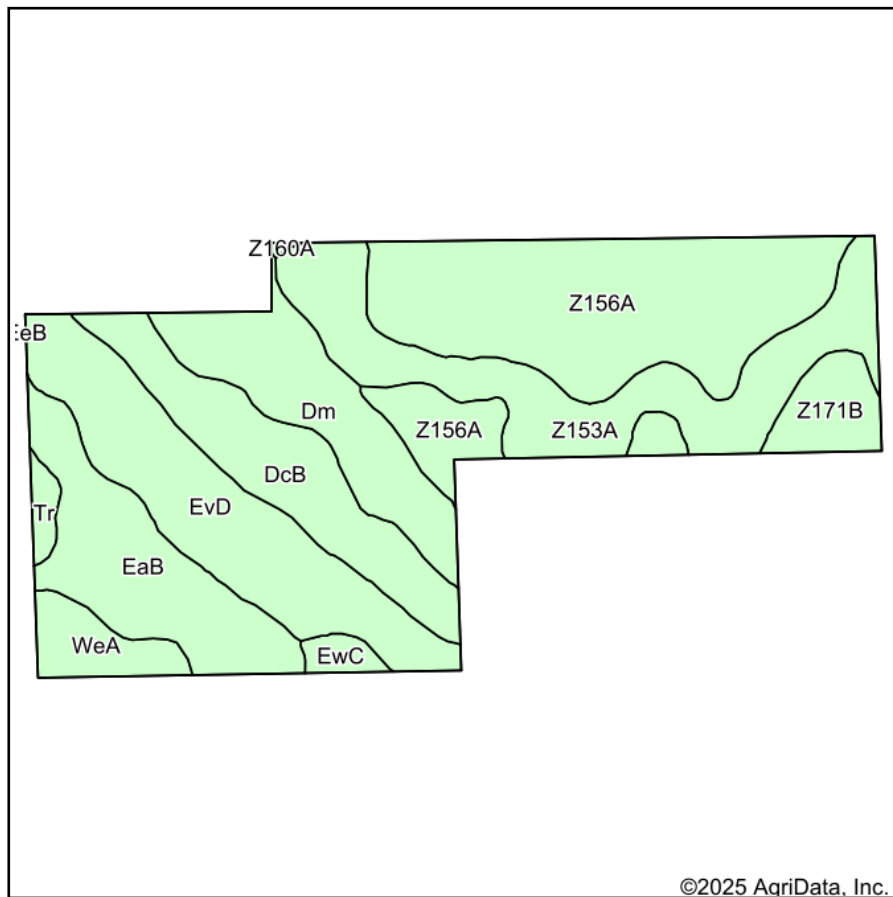
Area Symbol: SD011, Soil Area Version: 33

Code	Soil Description	Acres	Percent of field	Non-Irr Class	Irr Class	Productivity Index	*n NCCPI Overall
EaB	Egan-Ethan complex, 2 to 6 percent slopes	24.19	30.0%		Ile	85	69
Dm	Dimo clay loam, 0 to 2 percent slopes	21.30	26.5%		Ils	73	48
DcB	Davis loam, 2 to 6 percent slopes	19.55	24.3%		Ile	85	62
Z171B	Renshaw-Fordville loams, coteau, 2 to 6 percent slopes	6.53	8.1%		IVs	44	44
WeA	Wentworth-Trent complex, 0 to 2 percent slopes	6.38	7.9%		I	95	69
Tr	Trent silty clay loam, 0 to 3 percent slopes	1.40	1.7%		I	98	77
Z156A	Ludden silty clay, 0 to 1 percent slopes, frequently flooded	0.50	0.6%		IVw	55	35
EvD	Ethan-Clarno loams, 9 to 15 percent slopes	0.46	0.6%		Ve	51	53
Z153A	Lamoure-Rauville silty clay loams, channeled, 0 to 2 percent slopes, frequently flooded	0.15	0.2%		VIw	13	24
EwC	Ethan-Egan complex, 5 to 9 percent slopes	0.06	0.1%		IIle	69	63
Weighted Average				2.10	*-	79	*n 59.5

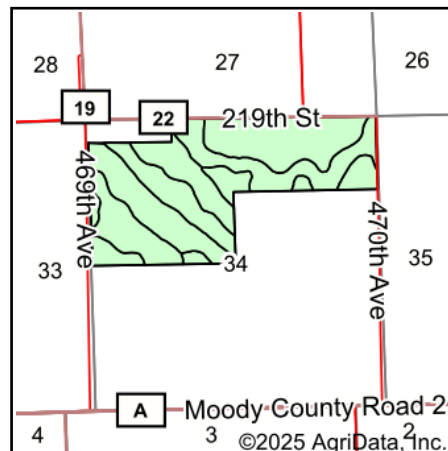
*n: The aggregation method is "Weighted Average using all components"

*- Irr Class weighted average cannot be calculated on the current soils data due to missing data.

Soils Map



Soils data provided by USDA and NRCS.



State: **South Dakota**
 County: **Brookings**
 Location: **34-109N-50W**
 Township: **Medary**
 Acres: **224.47**
 Date: **11/10/2025**

BURLAGE PETERSON
 Auctioneers & Realtors, LLC

Maps Provided By:



Area Symbol: SD011, Soil Area Version: 33

Code	Soil Description	Acres	Percent of field	Non-Irr Class	Irr Class	Productivity Index	*n NCCPI Overall
Z156A	Ludden silty clay, 0 to 1 percent slopes, frequently flooded	59.46	26.6%	IVw		55	35
Z153A	Lamoure-Rauville silty clay loams, channeled, 0 to 2 percent slopes, frequently flooded	36.63	16.3%	Vlw		13	24
EvD	Ethan-Clarno loams, 9 to 15 percent slopes	35.74	15.9%	Ve		51	53
EaB	Egan-Ethan complex, 2 to 6 percent slopes	25.88	11.5%	Ile		85	69
DcB	Davis loam, 2 to 6 percent slopes	24.28	10.8%	Ile		85	62
Dm	Dimo clay loam, 0 to 2 percent slopes	23.08	10.3%	Ils		73	48
Z171B	Renshaw-Fordville loams, coteau, 2 to 6 percent slopes	7.61	3.4%	IVs		44	44
WeA	Wentworth-Trent complex, 0 to 2 percent slopes	7.22	3.2%	I	I	95	69
EwC	Ethan-Egan complex, 5 to 9 percent slopes	2.31	1.0%	IIIe		69	63
Tr	Trent silty clay loam, 0 to 3 percent slopes	2.07	0.9%	I	I	98	77
Z160A	Moritz, occasionally flooded-Lamoure, frequently flooded, complex, 0 to 2 percent slopes	0.19	0.1%	IIIs		65	55
Weighted Average				3.70	*-	57.5	*n 46.3

*n: The aggregation method is "Weighted Average using all components"

*- Irr Class weighted average cannot be calculated on the current soils data due to missing data.