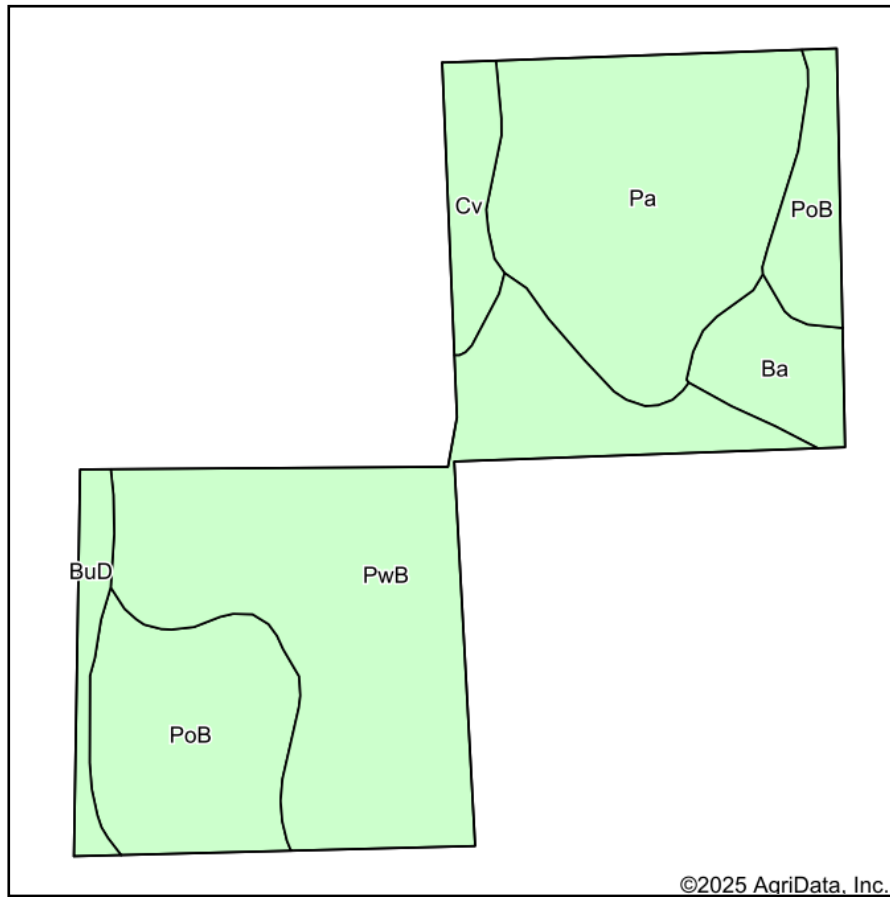
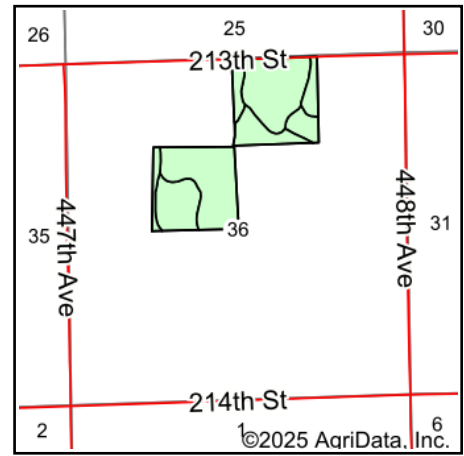


# Soils Map



Soils data provided by USDA and NRCS.



State: **South Dakota**  
 County: **Kingsbury**  
 Location: **36-110N-54W**  
 Township: **Spring Lake**  
 Acres: **78.53**  
 Date: **12/15/2025**

**BURLAGE  
PETERSON**

Auctioneers & Realtors, LLC

Maps Provided By:



Area Symbol: SD077, Soil Area Version: 29

Code	Soil Description	Acres	Percent of field	Non-Irr Class	Productivity Index	*n NCCPI Overall
PwB	Poinsett-Waubay silty clay loams, 1 to 6 percent slopes	31.74	40.4%	Ile	89	72
Pa	Parnell silty clay loam	21.39	27.2%	Vw	34	14
PoB	Poinsett-Buse-Waubay complex, 1 to 6 percent slopes	15.31	19.5%	Ile	81	68
Ba	Badger silty clay loam, 0 to 1 percent slopes	4.29	5.5%	Ilw	79	45
Cv	Cubden-Badger silty clay loams, coteau, 0 to 2 percent slopes	3.38	4.3%	Ils	80	57
BuD	Buse-Barnes loams, 9 to 20 percent slopes	2.42	3.1%	Ve	40	59
Weighted Average				2.91	70	*n 52.9

\*n: The aggregation method is "Weighted Average using all components"

Soils data provided by USDA and NRCS.