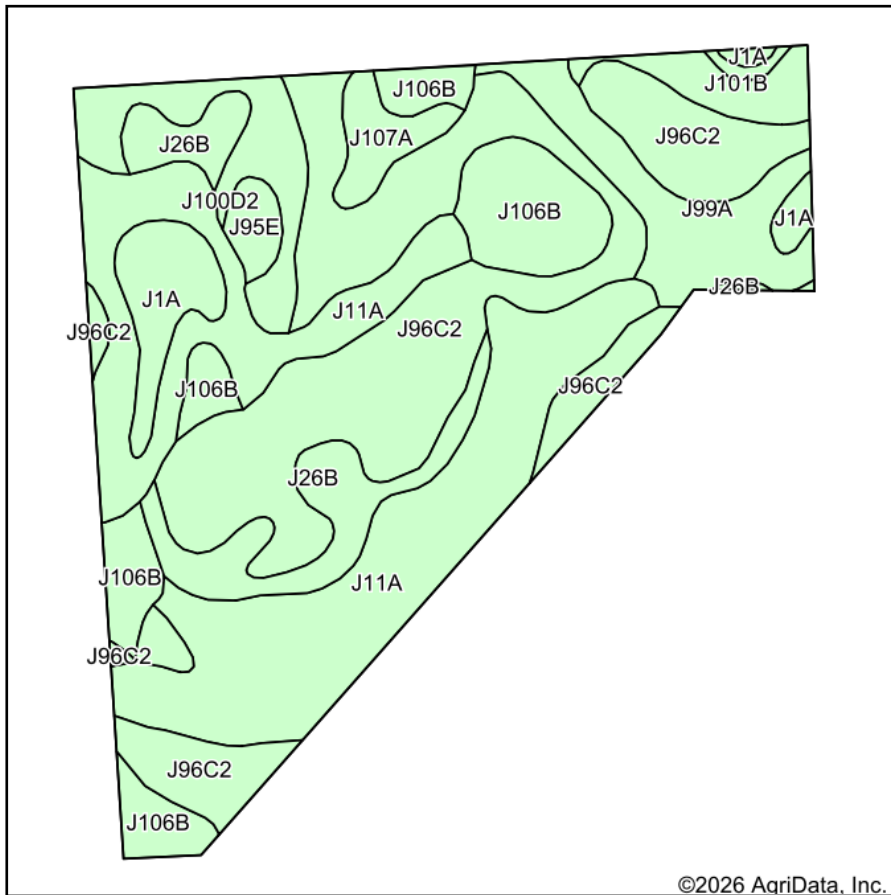
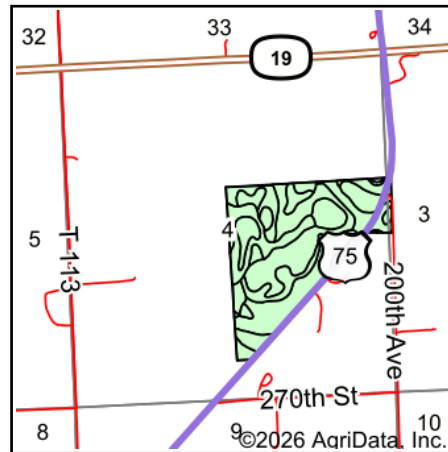


Soils Map



Soils data provided by USDA and NRCS.



State: **Minnesota**
 County: **Lincoln**
 Location: **4-111N-45W**
 Township: **Ash Lake**
 Acres: **111.84**
 Date: **3/11/2026**

**BURLAGE
 PETERSON**
 Auctioneers & Realtors, LLC

Maps Provided By:



Area Symbol: MN081, Soil Area Version: 24

Code	Soil Description	Acres	Percent of field	Non-Irr Class	Productivity Index	*n NCCPI Overall
J96C2	Barnes-Buse complex, 6 to 12 percent slopes, moderately eroded	35.72	31.8%	Ve	80	59
J11A	Vallers clay loam, 0 to 2 percent slopes	31.64	28.3%	llw	90	68
J106B	Barnes, occasional saturation-Buse-Svea complex, 1 to 6 percent slopes	11.13	10.0%	lle	88	66
J26B	Darnen loam, 2 to 6 percent slopes	8.08	7.2%	lle	99	72
J99A	Lakepark clay loam, 0 to 3 percent slopes, overwash	7.51	6.7%	llw	98	71
J100D2	Buse, eroded-Wilno complex, 12 to 18 percent slopes	5.81	5.2%	IVe	64	50
J1A	Parnell silty clay loam, depressional, 0 to 1 percent slopes	4.76	4.3%	lllw	86	62
J101B	Hokans-Svea complex, 1 to 4 percent slopes	2.69	2.4%	lle	98	68
J107A	Lakepark-Roliss-Parnell, depressional, complex, 0 to 3 percent slopes	2.42	2.2%	llw	93	71
J95E	Buse, stony-Wilno complex, 18 to 25 percent slopes	1.35	1.2%	Vle	26	43
J57A	Balaton loam, 1 to 3 percent slopes	0.73	0.7%	lls	96	70
Weighted Average				3.15	85.8	*n 64

*n: The aggregation method is "Weighted Average using all components"