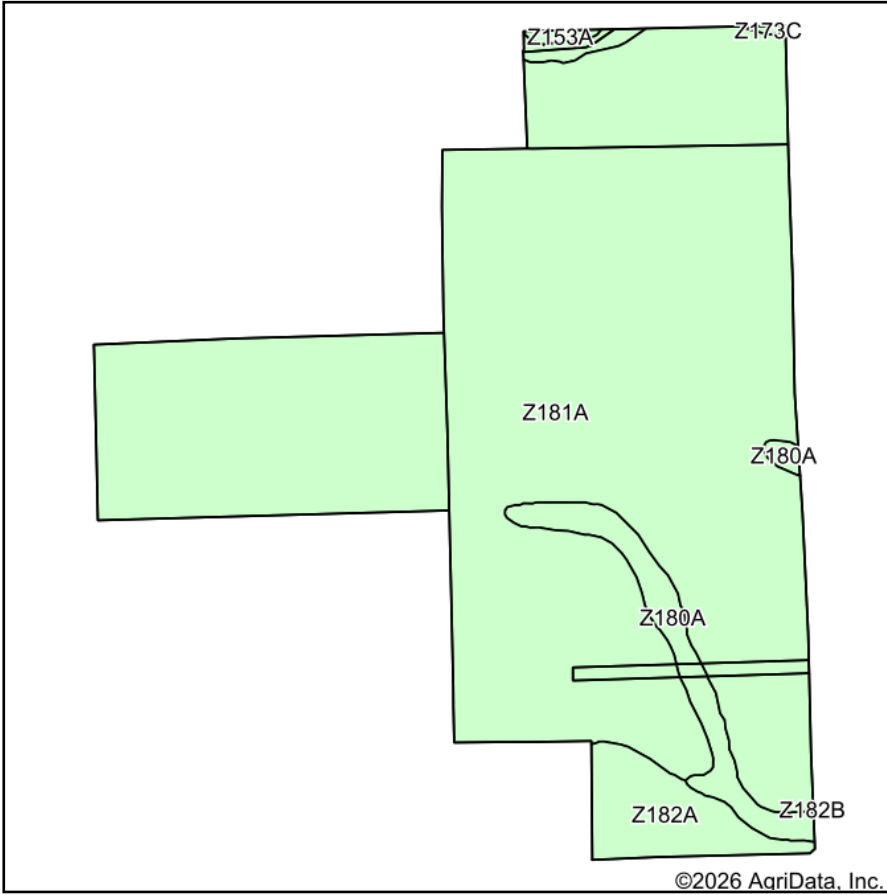
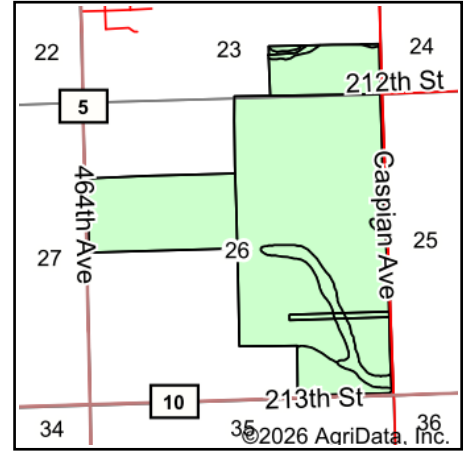


Soils Map



Soils data provided by USDA and NRCS.



State: **South Dakota**
 County: **Brookings**
 Location: **26-110N-51W**
 Township: **Volga**
 Acres: **413**
 Date: **3/26/2026**

**BURLAGE
 PETERSON**
 Auctioneers & Realtors, LLC

Maps Provided By:

 CUSTOMIZED ONLINE MAPPING
 © AgriData, Inc. 2025 www.AgriDataInc.com



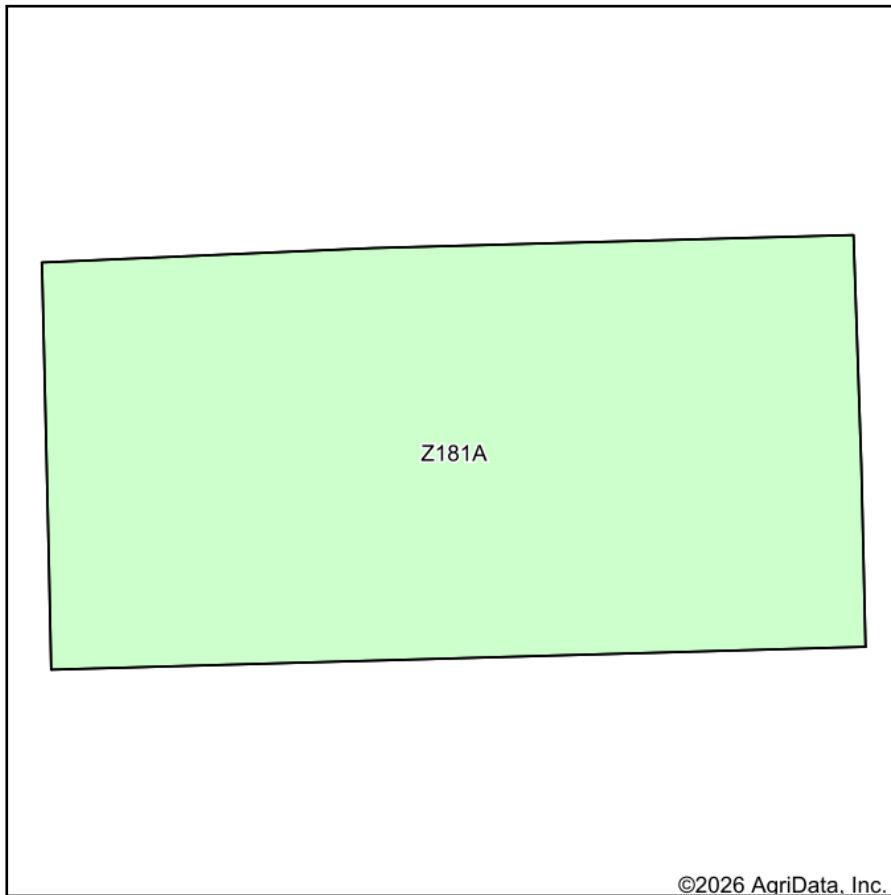
Area Symbol: SD011, Soil Area Version: 33

Code	Soil Description	Acres	Percent of field	Soil Drainage	Non-Irr Class *c	Range Production (lbs/acre/yr)	Productivity Index
Z181A	Brandt silty clay loam, 0 to 2 percent slopes	373.69	90.5%	Well drained	Is	3544	86
Z180A	Goldsmith silty clay loam, coteau, 0 to 2 percent slopes	17.79	4.3%	Moderately well drained	Iw	4494	89
Z182A	Estelline silt loam, coteau, 0 to 2 percent slopes	17.67	4.3%	Well drained	IIs	3497	66
Z174D	Sioux-Renshaw complex, coteau, 9 to 15 percent slopes	2.56	0.6%	Excessively drained	VIIs	2344	22
Z153A	Lamoure-Rauville silty clay loams, channeled, 0 to 2 percent slopes, frequently flooded	0.97	0.2%	Poorly drained	VIw	5536	13
Z173C	Renshaw-Sioux complex, coteau, 6 to 9 percent slopes	0.32	0.1%	Somewhat excessively drained	IVe	2343	28
Weighted Average					1.09	3579.2	84.7

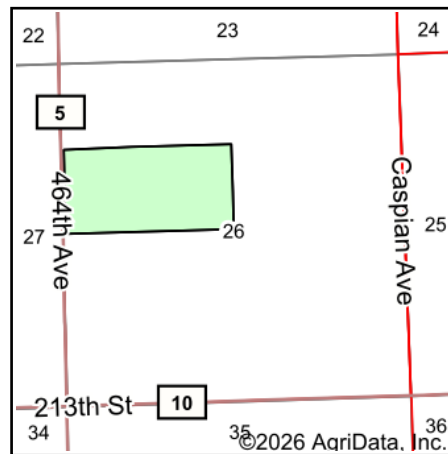
*c: Using Capabilities Class Dominant Condition Aggregation Method

Soils data provided by USDA and NRCS.

Tract 1 Soils Map



Soils data provided by USDA and NRCS.



State: **South Dakota**
 County: **Brookings**
 Location: **26-110N-51W**
 Township: **Volga**
 Acres: **78.51**
 Date: **3/26/2026**

**BURLAGE
 PETERSON**
 Auctioneers & Realtors, LLC

Maps Provided By:

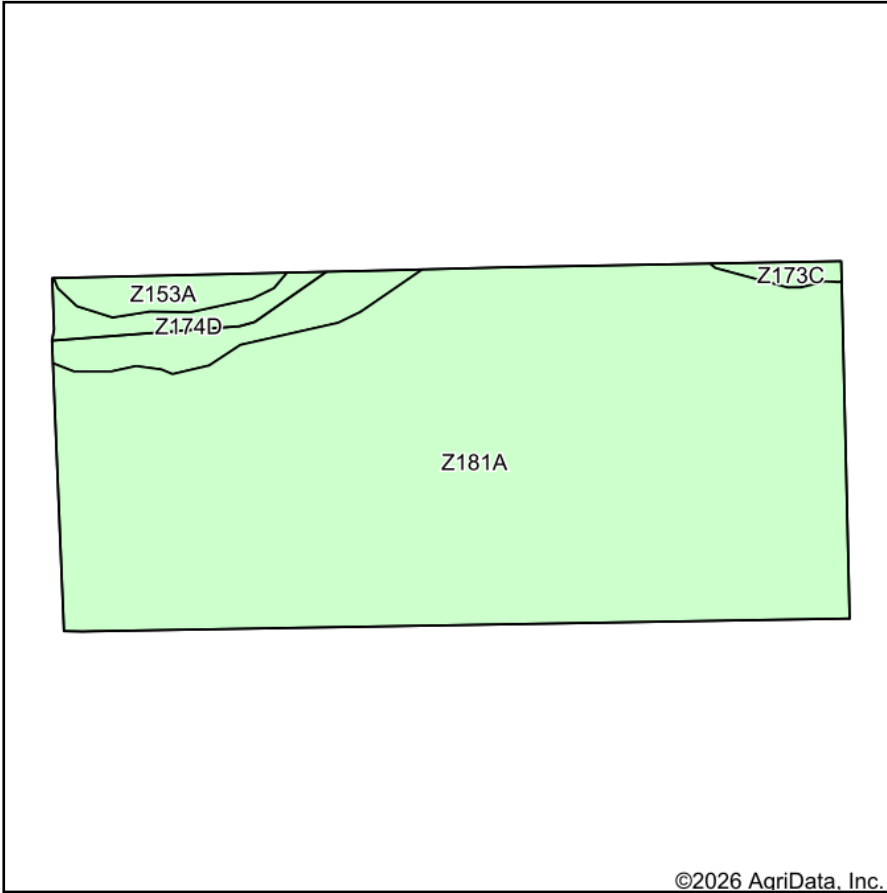


Area Symbol: SD011, Soil Area Version: 33

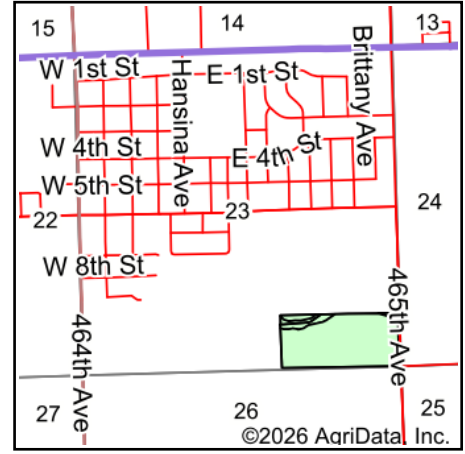
Code	Soil Description	Acres	Percent of field	Soil Drainage	Non-Irr Class *c	Range Production (lbs/acre/yr)	Productivity Index
Z181A	Brandt silty clay loam, 0 to 2 percent slopes	78.51	100.0%	Well drained	Is	3544	86
Weighted Average					1.00	3544	86

*c: Using Capabilities Class Dominant Condition Aggregation Method

Tract 2 Soils Map



Soils data provided by USDA and NRCS.



State: **South Dakota**
 County: **Brookings**
 Location: **23-110N-51W**
 Township: **Volga**
 Acres: **39.03**
 Date: **3/26/2026**

**BURLAGE
 PETERSON**

Auctioneers & Realtors, LLC

Maps Provided By:



© AgriData, Inc. 2025

www.AgriDataInc.com



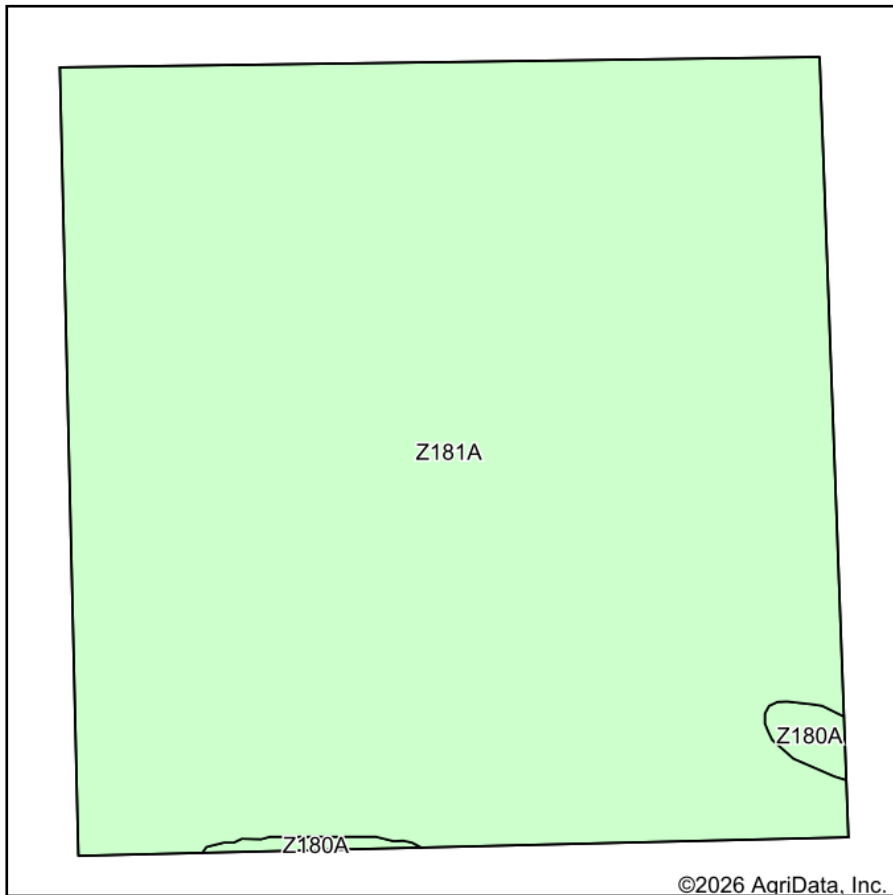
Area Symbol: SD011, Soil Area Version: 33

Code	Soil Description	Acres	Percent of field	Soil Drainage	Non-Irr Class *c	Range Production (lbs/acre/yr)	Productivity Index
Z181A	Brandt silty clay loam, 0 to 2 percent slopes	35.18	90.1%	Well drained	Is	3544	86
Z174D	Sioux-Renshaw complex, coteau, 9 to 15 percent slopes	2.56	6.6%	Excessively drained	VIs	2344	22
Z153A	Lamoure-Rauville silty clay loams, channeled, 0 to 2 percent slopes, frequently flooded	0.97	2.5%	Poorly drained	VIw	5536	13
Z173C	Renshaw-Sioux complex, coteau, 6 to 9 percent slopes	0.32	0.8%	Somewhat excessively drained	IVe	2343	28
Weighted Average					1.48	3505	79.5

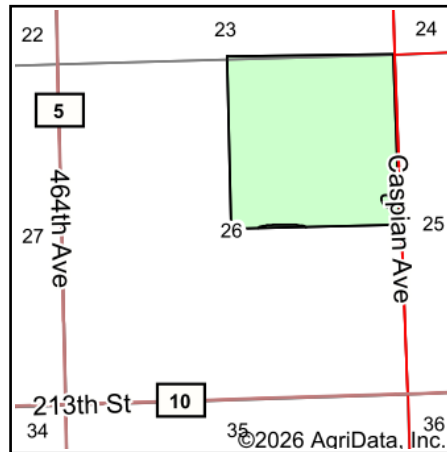
*c: Using Capabilities Class Dominant Condition Aggregation Method

Soils data provided by USDA and NRCS.

Tract 3 Soils Map



Soils data provided by USDA and NRCS.



State: **South Dakota**
 County: **Brookings**
 Location: **26-110N-51W**
 Township: **Volga**
 Acres: **160**
 Date: **3/26/2026**

**BURLAGE
 PETERSON**
 Auctioneers & Realtors, LLC

Maps Provided By:

 © AgriData, Inc. 2025 www.AgriDataInc.com

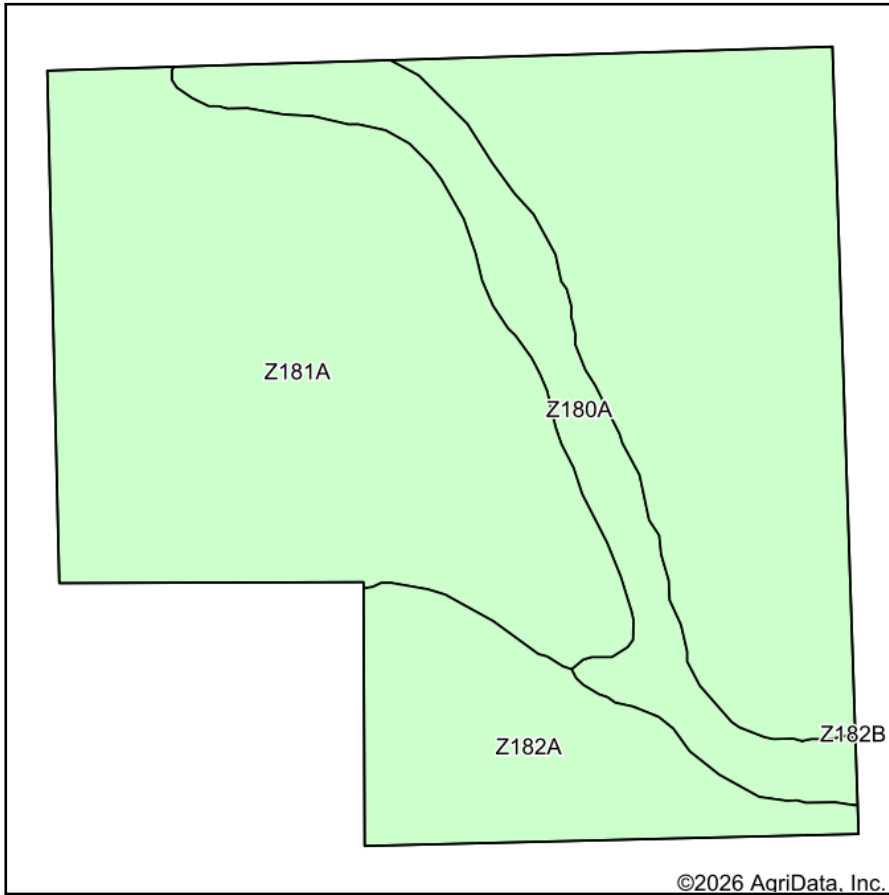


Area Symbol: SD011, Soil Area Version: 33

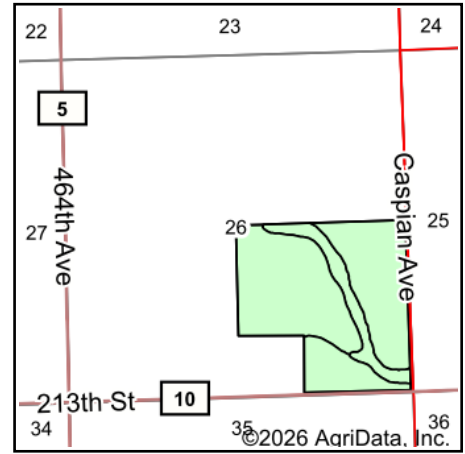
Code	Soil Description	Acres	Percent of field	Soil Drainage	Non-Irr Class *c	Range Production (lbs/acre/yr)	Productivity Index
Z181A	Brandt silty clay loam, 0 to 2 percent slopes	158.18	98.9%	Well drained	Is	3544	86
Z180A	Goldsmith silty clay loam, coteau, 0 to 2 percent slopes	1.82	1.1%	Moderately well drained	Iw	4494	89
Weighted Average					1.00	3554.8	86

*c: Using Capabilities Class Dominant Condition Aggregation Method

Tract 4 Soils Map



Soils data provided by USDA and NRCS.



State: **South Dakota**
 County: **Brookings**
 Location: **26-110N-51W**
 Township: **Volga**
 Acres: **138.28**
 Date: **3/26/2026**

**BURLAGE
 PETERSON**
 Auctioneers & Realtors, LLC

Maps Provided By:

 © AgriData, Inc. 2025 www.AgriDataInc.com



Area Symbol: SD011, Soil Area Version: 33

Code	Soil Description	Acres	Percent of field	Soil Drainage	Non-Irr Class *c	Range Production (lbs/acre/yr)	Productivity Index
Z181A	Brandt silty clay loam, 0 to 2 percent slopes	104.01	75.2%	Well drained	Is	3544	86
Z182A	Estelline silt loam, coteau, 0 to 2 percent slopes	18.10	13.1%	Well drained	IIs	3497	66
Z180A	Goldsmith silty clay loam, coteau, 0 to 2 percent slopes	16.17	11.7%	Moderately well drained	Iw	4494	89
Weighted Average					1.13	3648.9	83.7

*c: Using Capabilities Class Dominant Condition Aggregation Method

Soils data provided by USDA and NRCS.