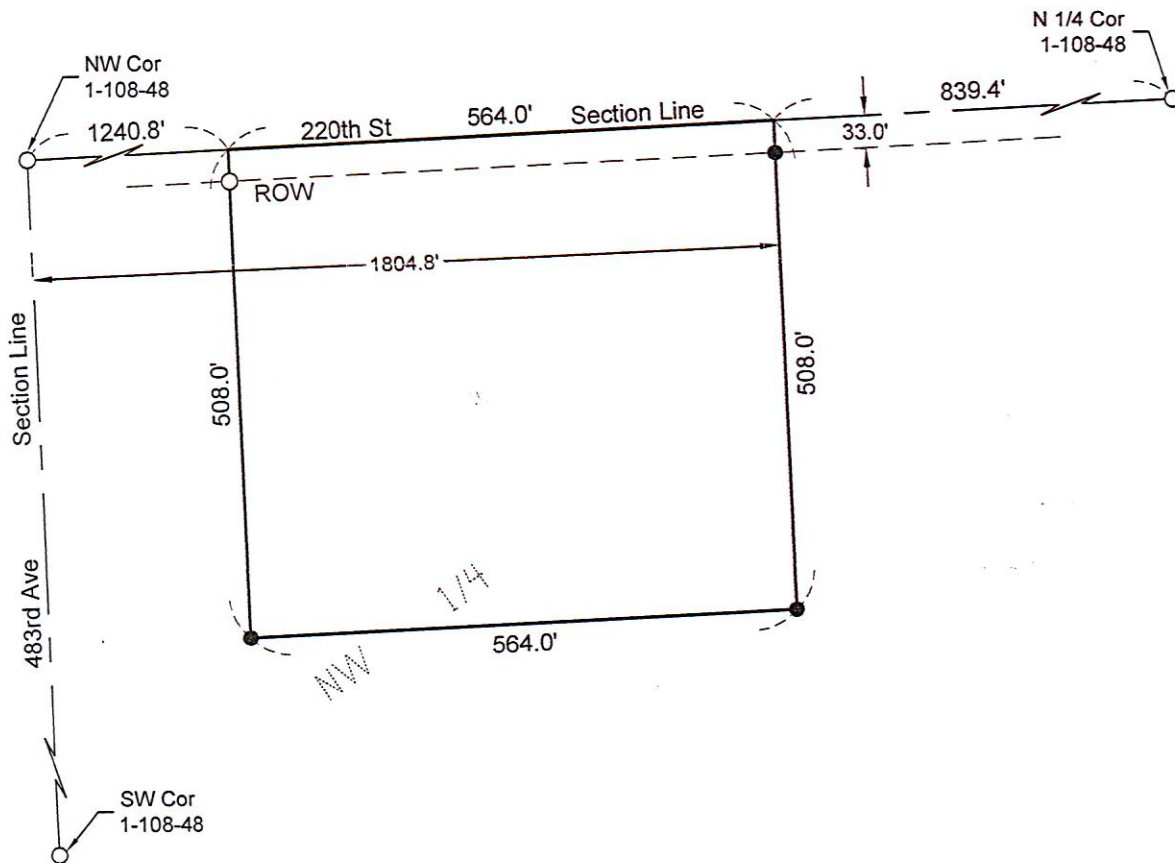


### LEGAL DESCRIPTION

THE EAST 564.0 FEET OF THE WEST 1804.8 OF THE NORTH 508.0 FEET OF THE NW 1/4 OF SECTION 1, TOWNSHIP 108 NORTH, RANGE 48 WEST OF THE 5<sup>TH</sup> P.M., MOODY COUNTY, SOUTH DAKOTA. SUBJECT TO PUBLIC ROAD RIGHT-OF-WAY AND EASEMENTS OF RECORD.

CONTAINING 6.6 ACRES MORE OR LESS OF WHICH 0.4 ACRES MORE OR LESS IS PUBLIC ROAD RIGHT-OF-WAY.



- November, 2018
- Scale: 1" = 200'
- Monument Recovered
- Monument Set
- (5/8" x 18" Capped Rebar RLS 10400)
- Bearings are Based on Assumed Datum

